

**TORO®**

# SWING JOINTS



Toro offers a full line of swing joints that cover all Golf sprinkler thread types. Swing joints provide the flexibility to align the sprinkler to proper grade and level positioning to ensure optimum water use through maximum nozzle distribution uniformity.

## FEATURES & BENEFITS

### Minimize Friction Loss

1", 1¼" and 1½" models are available to cover flows exceeding 80 gpm, and minimize friction loss to ensure optimum pressure is available at each sprinkler.

### Standard 2X90 And Ultra 4X90 Outlet Configurations

The standard 2x90 models provide two 90's at the outlet for alignment in two directions and the Ultra 4x90 models provide four 90's at the outlet for maximum alignment flexibility in four directions.

### Saddle And Glue Tee Models

Glue tees for PVC piping applications and saddle tees for HDPE and PVC piping applications. Both tee styles are available with 1", 1¼" and 1½" double o-ring sealing outlets.

### Quick Coupler Models

All swing joint styles are available with a quick coupler outlet that includes both an anti-rotation and position stabilizing feature to ensure the quick coupling valve stays secure during key installation and removal.





**1 1/4" Female ACME x 1" Male ACME Adapter**  
Allows you to upgrade existing Rain Bird® Eagle™\* 700 1 1/4" sprinklers to any Toro 800S or DT Series Sprinkler. P/N TA36-132

\*Rain Bird is a registered trademark of Rain Bird Corporation. Eagle is a trademark of Rain Bird Corporation.

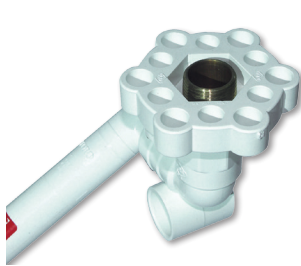
**Durability And Reliability**  
Constructed from schedule 80 PVC for durability and provides double o-ring seals on all swing fittings to ensure a lifetime of reliability and leak free performance.



1", 1 1/4" and 1 1/2"



Standard 2x90 and Ultra 4x90



Quick Coupler



Glue tees, Saddle tees

### Additional Features

- ✓ Schedule 80 PVC construction
- ✓ Double o-ring swivel joints
- ✓ Low friction loss characteristics
- ✓ 315 psi pressure rating
- ✓ 800 psi burst pressure safety rating
- ✓ Standard models with 2x90 outlet configuration
- ✓ Ultra models with 4x90 outlet for maximum alignment flexibility
- ✓ 3 inlet fittings styles: ACME, male thread and 4" spigot
- ✓ 2 outlet fitting styles: ACME and male thread
- ✓ 8", 12" and 18" lay lengths
- ✓ Saddle Tee models: 2" tee with 1", 1 1/4" or 1 1/2" outlet
- ✓ Glue Tee models: 2" tee with 1", 1 1/4" or 1 1/2" outlet
- ✓ Glue 90° models: 2" 90° with 1", 1 1/4" or 1 1/2" outlet
- ✓ Quick coupler models with Dura-lock anti-rotation feature
- ✓ Compatible with all brands of service and saddle tees

### Warranty

- Five years
- Toro Golf sprinkler warranty extended to 5 years when purchased and installed with a Toro Swing Joint

### Toro Tool Tip:

Use a 1 1/4" hole saw for the 1" Saddle Tee.

Use a 1 1/2" hole saw for the 1 1/4" and 1 1/2" Saddles.



### Specifying Information—Toro Swing Joints

#### TSJ-XXXX-XX-XX-X-XXX\*

Description	Inlet Size	Inlet Type	Size	Length	Number of Elbows	Outlet Size	Outlet Type
TSJ	XX	XX	XX	XX	X	XX	X
TSJ—Toro Swing Joint	10—1" 12—1.25" 15—1.5"	M—MIPT (male pipe thread) S—4" Spigot A—ACME Thread GE—Glue Elbow GT—Glue Tee ST—Saddle Tee	Blank—same as inlet size 10—1" 12—1.25" 15—1.5"	8—8" Lay Length 12—12" Lay Length 18—18" Lay Length	3—Standard Unibody for Side Pipe Mount 4—Standard Unibody for Top Pipe Mount 5—Ultra Unibody for Side Pipe Mount Q* 6—Ultra Unibody for Top Pipe Mount	10—1" 15—1.5"	M—MIPT (Male pipe thread) A—ACME thread QC—Quick Coupler
<b>Example:</b> A Toro 1 1/2" Swing Joint with an ACME inlet, 12" lay length, 3 elbows (standard uni-body) and 1 1/2" ACME outlet fitting would be specified as: <b>TSJ-15A-12-3-15A</b>							

\* Use QC to designate QC when the inlet size and size are the same (TSJ(10A)12-3-10QC) use Q when the inlet size and size are different (TSJ(15A10)12-3-10Q)