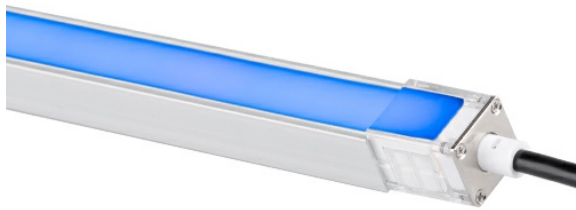


SRP RGBW Strip Light **STANDARD PREMIUM**



PROJECT

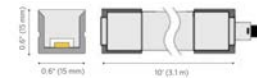
CATALOG #

TYPE

NOTES

The vibrant and versatile SRP RGBW Strip Light makes it easier than ever to illuminate stair ledges, outdoor patios, hardscape elements, and more.

When installed with the SRP-CC Color Controller, the SRP RGBW Strip Light is compatible with the next-generation Luxor Controller from FX Luminaire or any traditional low-voltage transformer for unmatched color-changing effects. Choose from two convenient control options: Standalone or Luxor Mode. For compatibility with any low-voltage transformer, use Standalone Mode. It lets you manually set Hue, Saturation, and Intensity. Luxor Mode allows a Luxor Controller to assign a Group and set Hue, Saturation, and Intensity values.



Quick Facts

- Total RGBW control; SRP-CC Strip Light Color Controller required
- Two convenient control options: Standalone or Luxor Mode
- Standalone Mode can be used with our EX, PX, and DX models as well as any standard low-voltage transformer, allowing users to manually set Hue, Saturation, and Intensity values
- Luxor Mode allows a Luxor Controller to assign a Group and set Hue, Saturation, and Intensity values
- IP65 rating for top performance in tough outdoor conditions

produces soft light distribution, and 2" (51 mm) cutmarks for precision
protects against harsh environments customization

SRP RGBW Strip Light SPECIFICATIONS

Comes with all necessary accessories, including solder- and adhesive-free splice connections that require no heat shrink, for under ledges
Optional aluminum end cap for flush mount simplifies installation on hardscape and seamless installation in any setting

Output	SRP RGBW
Total Lumens	24.25 lm/ft
Input Voltage	10 to 15 V
Input Power	1.7 W
VA	2.9 VA/ft
Efficacy (lm/W)	18.6
Color Rendering Index (CRI)	52
Center Beam Candlepower	--
Dimming	Yes; must use SRP-CC Color Controller
Primary Dimming (Transformer)	--
Secondary Dimming (Fixture)	--
RGBW Available	Yes; Must be used with SRP-CC Color Controller
Minimum Rated Life L90 B10 (Hrs)	50,000

* For optimal performance, use a trailing-edge (reverse phase-cut) dimmer.

SRP RGBW Strip Light SPECIFICATIONS

FX Luminaire

FX Luminaire is an industry-leading manufacturer of landscape and architectural lighting products with a focus on the advancement of LED technology and digital lighting control with zoning, dimming, and color adjustment capabilities. We offer a full spectrum of specification-driven lighting fixtures that can be utilized to create elegant, cutting-edge landscape lighting systems for commercial or residential applications. Our products are available exclusively via our extensive professional distributor network.

Materials

Silicone

Lamp

Integrated

Finish

White

Hardware

Includes 3" (76 mm) and 6" (152 mm) jumpers, splice clamps, LED spacer, end connector, and mounting clips.

Wiring

20 AWG (0.8 mm); VW-1; 176°F (80°C); 300 V; 10' (3 m) length, prestripped

Power

Input 10 to 15 VAC/VDC, 50/60 Hz. Remote transformer required (specify separately). SRP-CC Color Controller is also required to power the SRP RGBW Strip Light.

Housing

Silicone

Weight

10' (3.1 m) = 2.3 lbs (1.04 kg)

Ambient Operating Temperature

0°F to 140°F (-18°C to 60°C)

Sustainability

Innovation meets conservation in the design and manufacturing of our products. Where we can, we use recycled materials while maintaining superior functionality. Our LED products provide high-quality light at optimal energy efficiency, lifespan, and durability.

Control

Compatible with the Luxor Controller, DX Controller, EX Transformer, and PX Transformer from FX Luminaire when installed with the SRP-CC Color Controller.

Warranty

5-year limited warranty

Listings



SRP RGBW Strip Light ORDERING INFORMATION

[field_compliance]

Fixture

Finish

SRP



EXAMPLE FIXTURE CONFIGURATION: SRP-XX-XXXX-XX



SRP RGBW Strip Light PHOTOMETRICS

SRP RGBW Strip Light Illuminance at a Distance

Distance Feet (Meters)	Center Beam fc Foot-Candles (Lux)	Beam Width	
		Vertical: 115.7 °	Horizontal: 115.5 °
3.3' (1.0 m)	2.9 fc (1.1 lx)	10.5' (3.2 m)	10.5' (3.2 m)
6.7' (2.0 m)	0.7 fc (0.3 lx)	21.3' (6.5 m)	21.2' (6.5 m)
10.0' (3.1 m)	0.3 fc (0.1 lx)	31.8' (9.7 m)	31.7' (9.7 m)
13.3' (4.1 m)	0.2 fc (0.1 lx)	42.3' (12.9 m)	42.2' (12.9 m)
16.7' (5.1 m)	0.1 fc (0 lx)	53.1' (16.2 m)	52.9' (16.1 m)
20.0' (6.1 m)	0.1 fc (0 lx)	63.6' (19.4 m)	63.6' (19.3 m)

SRP RGBW Strip Light ORDERING INFORMATION

MOUNTING OPTIONS: Specify Separately

Mounts	Catalog No.		Mounts	Catalog No.	
Channel Mount, SRP - 3.3 ft. (1 m), Qty: 3	SRP-CHN		Hardscape Mount, SRP	SRP-MNT	

SRP RGBW Strip Light ORDERING INFORMATION


POWER OPTIONS: Specify Separately

Power	Catalog No.	Power	Catalog No.
SRP-CC Color Controller	SRP-CC		



SRP RGBW Strip Light ORDERING INFORMATION

SPLICING OPTIONS: Specify Separately

Splicing	Catalog No.		Splicing	Catalog No.	
Splice Connectors, SRP- RGBW	SRP-CONNECT- RGBW		Cutter Tool, SRP RGBW	SRP-CUT	