



Sevin[®] SL

PRODUCT INFORMATION

Active Ingredient: Carbaryl 43.0%

IRAC Group: 1A

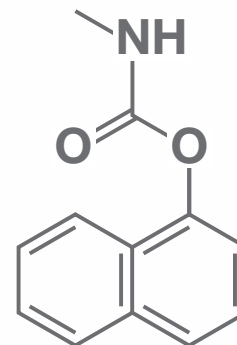
EPA Registration Number: 432-1227

Signal Word: Caution

Formulation: Soluble Liquid

REI: 12 hours

Sevin[®] SL is a fast-acting, broad-spectrum, contact insecticide for use on ornamentals, vegetables and fruits.



Best Uses

- Economical, broad-spectrum solution for insect control
- Controls the most important ornamental insect pests in nurseries, including aphids, beetles, caterpillars, mites, leafminers and many more (see back of sheet for list)
- Effective preventively for boring beetles

Attributes

- Contact insecticide offers broad-spectrum control of more than 80 ornamental pests
- Quick knockdown activity provides visible results within hours of application
- No documented resistance to ornamental pests
- Trusted by professionals for decades
- Use on ornamentals, certain fruit, vegetable and tree nut crops

Application

- For foliar applications to ornamentals, apply 0.75-1 qt./100 gal. of water
- For foliar applications to other crops, refer to label
- Sevin SL is packaged in 2.5-gal. containers



Broad-Spectrum Activity

PESTS CONTROLLED		
Ants*	Gypsy moth	Pitch pine tip moth
Aphids	Hackberry nipplegall maker	Plant bugs
Armyworm	Holly bud moth	Poinsettia hornworm
Azalea leafminer	Holly leafminer	Psyllids
Bagworms	Ips engraver beetles	Puss caterpillar
Birch leafminer	Jackpine budworm	Redhumped oakworm
Blister beetle	Japanese beetle	Roundheaded pine beetle
Boxelder bug	Jeffery pine needleminer	Rose chafer
Boxwood leafminer	June beetles	Rose slug
Brown tail moth	Lace bugs	Sawflies (exposed)
Catalpa sphinx	Leafhoppers	Scale insects (crawlers)
Chiggers	Leafrollers	Sowbugs
Cooley spruce gall adelgid	Locust borer	Spiney elm caterpillar
Cutworms	Maple leafcutter	Springtails
Cypress tip moth	Mealybugs	Spruce budworm
Douglas-fir tussock moth	Mimosa webworm	Spruce beetle
Eastern spruce gall adelgid	Mountain pine beetle	Spruce needleminer
Elm bark beetle	Nantucket pine tip moth	Subtropical pine tip moth
Elm leaf aphid	Oak leafminers	Tent caterpillars
Elm leaf beetle	Oak moth	Thorn bug
Eriophyid mites	Oak skeletonizer	Thrips (exposed)
European pine shoot moth	Oakworm complex	Ticks*
Flea beetle	Oleander caterpillar	Walnut caterpillar
Fuchsia gall mite	Olive ash borer	Webworms
Fuller rose beetle	Orange-striped oakworm	Western pine beetle
Gall midges	Periodical cicada	Western spruce budworm
Gall wasps	Pine looper	Willow leaf beetles
Glassy winged sharpshooter	Pine sawfly	Woolly gall aphid
Greenstriped mapleworm	Pine spittlebug	Yellow poplar weevil
Grasshoppers		

*Will only kill pests that are present at time of application and directly contacted by product.

