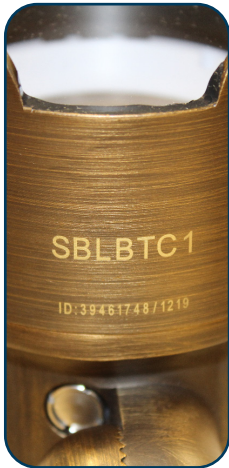




Bluetooth LED RGBW Adjustable Color Spotlight (SBLBTC1)



**REQUIRES use of
Range Extender
(SBLBTR)
(sold separately)**

Features:

- ▶ Three times brighter color than comparable MR16 products
- ▶ Set-N-Stake Quick Link Composite with Brass Insert Stake
- ▶ Brass Body and Knuckle with Bronze Finish
- ▶ Bayonet Shroud adjustment provides five different settings
- ▶ Fixed 36° Beam Angle
- ▶ High Impact Glass Lens
- ▶ IP65 Rated for harsh environments
- ▶ 10 Year Warranty
- ▶ 12V-15V AC/DC Power Range
- ▶ Wattage: 2Watt - 10Watt
- ▶ Provided with 6 Foot, 105° rated, #18-2 Lead Wire
- ▶ Includes Hex Key Adjustment Tool (4mm)
- ▶ Moisture Relief Valves ensure no condensation accumulates inside fixture
- ▶ Operating range -30° to +45°C
- ▶ Dimmable from 5% to 100% all color options
- ▶ CCT Range Tunable from 2500K (@76.8CRI) to 6500K (@83.2CRI)
- ▶ RGB Options: Unlimited color wheel options. Preset Red, Green, Blue, White
- ▶ Fixture grouping, individual scene control, preset scenes, color cycling
- ▶ Complies with requirement of UL-1838 and CAN/CSA-C22.2 No. 250.7

Unit REQUIRES the use of Range Extender (SBLBTR)

Place Repeaters 1-10 feet from farthest fixtures. Use multiple repeaters spaced 20' apart for full coverage (sold separately)

BLUETOOTH RGBW SPOTLIGHT Electrical and Photometric Test Results

Fixture SBLBTC1	Color Setup in App	Flux	Beam Angle	Voltage	Current	Power	Pf	VA
*Testing done at full power	[-]	[Lumens]	[°]	[VAC]	[A]	[W]	[-]	
Source Lighting SBLBTC1 Spotlight	2700°	342	36°	12.0	1.7	10.300	0.732	14.1
Source Lighting SBLBTC1 Spotlight	Green	249	36°	12.0	1.2	10.700	0.730	14.7
Source Lighting SBLBTC1 Spotlight	Red	133	36°	12.0	1.1	9.260	0.720	12.9
Source Lighting SBLBTC1 Spotlight	Blue	47	36°	12.0	1.2	10.300	0.732	14.1
Source Lighting SBLBTC1 Spotlight	Indigo	92	36°	12.0	1.1	9.670	0.728	13.3