

# MJ-Series Flow Sensor

## Measure What You Use and Quickly Stop Leaks

With MJ100B, you and your customers can be proactive against leaks in your irrigation system by offering on-site flow monitoring and protection. Designed for residential and light commercial use, the MJ-Series is the ideal option for upholding Rain Bird's commitment to the Intelligent Use of Water™.



### Compatible with ESP-ME3

When paired with the ESP-ME3 Module Controller, the MJ-Series allows for on-site flow monitoring and measurement.

### Great for Low Flow Rates

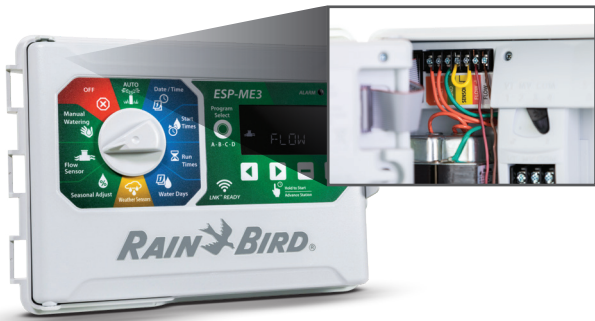
Detects flow rates as low as 1.2 gallons per minute; perfect for smaller drip or spray zones.

### Convenient

When paired with the LNK™ WiFi Module, the information is at your fingertips with the Rain Bird Mobile App.

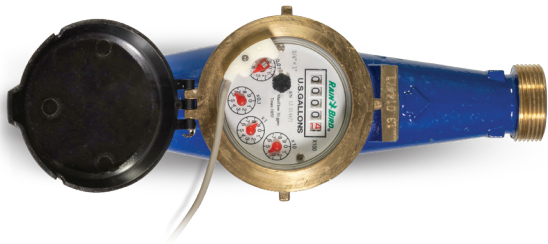


# MJ-Series Flow Sensor



## Pair with the ESP-ME3

- Active management of irrigation when paired with the ESP-ME3 controller
- Simple wiring and installation
- Identify and stop leaks automatically



## Accurate Measurements

- Innovative Multi-Jet Totalizing design provides the most accurate readings
- Delivers precise accuracy with flow ranges from 1.2 gpm to 50 gpm



## Convenient

- The included unions make installation and servicing simple and quick
- Brass body and glass-filled nylon construction provides maximum protection against high pressure surges, physical damage and corrosion
- Rebates offered by Water Agencies

### Programming K-Factor and Offset

Flow Sensor Size	K-Factor	Offset	Pulse Output Rate
1"	6.003	+00.000	10 pulses per gallon

### Rain Bird Multi-Jet Flow Sensor Pressure Loss

	1 gpm	5 gpm	7.5 gpm	10 gpm	15 gpm	20 gpm	25 gpm	30 gpm	40 gpm	50 gpm
1"	—	0.1 psi	0.25 psi	0.5 psi	1.4 psi	2.0 psi	3.2 psi	4.5 psi	7.8 psi	13.0 psi



rainbird.com

® Registered trademark of Rain Bird Corporation

© 2019 Rain Bird Corporation 04/19

D41507