

# Blazing Wire Connectors™

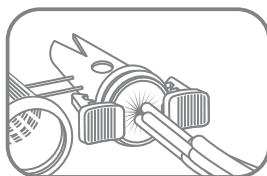
## INSTALL. FASTER.

**BLAZING**  
BLAZING PRODUCTS BY TOM KING

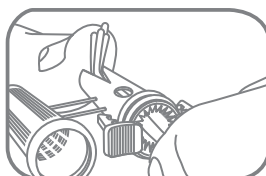
### Snap-Locking Waterproof Connectors with Pre-Filled Silicone

Low Voltage - Direct Bury

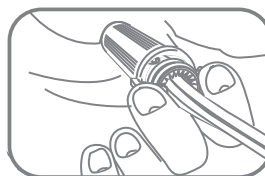
#### Guaranteed Fastest No-Hassle Installation



1. Insert



2. Bend



3. Close

#### Save time and money with the next-generation waterproof wire connector

Wires are securely connected in "V-Channel" for guaranteed connection. Outer and inner sleeves join to lock copper wire ends together for permanent contact.

Pre-filled, non-hardening silicone is pumped and packed around connection, sealing out moisture and preventing corrosion. Locks tight with double seal.

Works the first time, every time and never slips off the wires.

World's best-sealing connectors for waterproof low-voltage connections.

Exclusive patented  
"V-Channel" locks in  
wires the first time.

**For irrigation and low-voltage lighting.**



**"Simple, reliable, easy to use.**  
I assure you, you have an excellent  
product that I will always use."

*Ronnie B. - Hollidaysburg, PA*

[www.BlazingProducts.com](http://www.BlazingProducts.com)

# Blazing Wire Connectors™

## INSTALL. FASTER.

**BLAZING**  
BLAZING PRODUCTS BY TOM KING

- When you check a valve box, do you find connectors dangling off the end of the wires?
- Do you have to throw away connectors that do not grab the wires? Do wires break off inside?
- Do you have to turn your connectors upside down to avoid collecting water? Are they messy to service?
- Snap-Locking connectors work the first time, every time
- Silicone is hydraulically packed around all bare wires
- Locks tight with latches and double-ring seal
- 5-second easy, compact installation - no mistakes

### Snap-Locking connectors eliminate common installation problems:

**Locking** - Never loosens or dangles off wires

**Foolproof** - Never fails to grab the wires

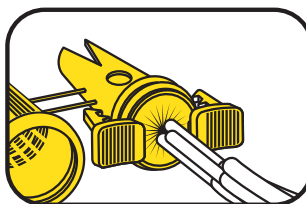
**Easy** - Compact 5-second installation

**No Mess** - Silicone encapsulates connection and will not melt out

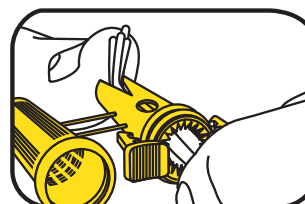
**No Tunneling Effect** - No channel for moisture to follow into the connection

**Vibration Proof** - Connection stays secure

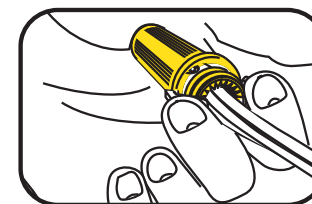
### Snap-Locking Waterproof Connectors with Pre-Filled Silicone



1. Insert



2. Bend



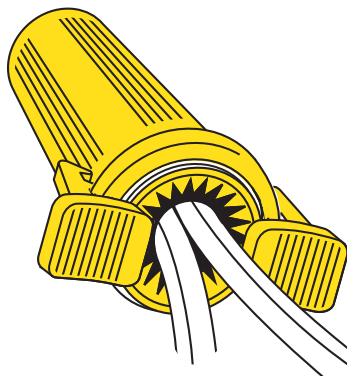
3. Close



When using both solid and stranded wire, wrap stranded wire around untwisted solid wire.



Special LV 9500 features - Bending sleeve for solid wires and round hole below "V" to accommodate large wire combinations.



#### For Irrigation

**LV 9000** 24 to 18 AWG - Yellow

#### For Low-Voltage Landscape Lighting

**LV 9500** 18 to 10 AWG - Black

### Technical Specifications

LV 9000 - Minimum 2 #24 AWG - Maximum 5 #18 AWG

LV 9500 - Minimum 2 #18 AWG - Maximum 3 #10 with 1 #18 AWG

- Sealant temperature - -40° F to 400° F
- Copper and/or aluminum wires, solid or stranded
- For low-voltage connections only - Maximum 30 Volts
- Also ideal for security systems, telephone wire splices, boats and recreational vehicles, heavy construction equipment, trailers and more