



IQ™ v2.0 Central Control System NCC Configurator Instructions

December 3, 2010

Contents

What is the NCC Configurator?.....	3
What you will need to use the NCC Configurator	4
Install the NCC Configurator on your computer	5
Connect the NCC Configurator communication cables.....	6 & 7
Set the NCC Cartridge to NCC Configurator Mode.....	8
Using the NCC Configurator	9
NCC-PH Phone Cartridge Configuration	10
NCC-GP GPRS/Cellular Cartridge Configuration	11
NCC-EN Ethernet Cartridge Configuration.....	12
NCC-WF WiFi Cartridge Configuration	13
NCC-RS RS-232 Cartridge Configuration.....	14
NCC Configurator History Log	15

What is the NCC Configurator?

- The NCC Configurator Utility is required to configure the NCC Cartridge IQ Port communication settings for IQ Direct and Server Satellite Controllers utilizing the following communication options:
 - NCC-RS External Modem
 - NCC-GP GPRS/Cellular
 - NCC-EN Ethernet
 - NCC-WF Wi-Fi
- The NCC Configurator Utility is not required to configure IQ Client Satellites or IQ Direct and Server Satellites utilizing the following communication options:
 - NCC-RS IQSSRADIO
 - NCC-RS Direct-Connect Cable
 - NCC-PH Phone
- The NCC Configurator Utility has been designed to run on a desktop, laptop or inexpensive Netbook computer

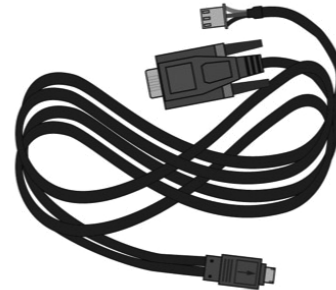


What you will need...

- Computer (IQ desktop or a separate laptop)
- USB-to-Serial Adapter (required only if your computer does not have a Serial Port)
 - recommended model IOGEAR GUC232A
<http://www.iogear.com/product/GUC232A/>
- IQ Software CD v2.2 or newer
- IQNCCNMC Null-Modem Cable (Beige Cable shipped with the IQ Software Package)
- IQNCCMY “Y” Cable (Black “Y” cable shipped with IQNCC Network Communication Cartridge)
- Construction or As-Built Drawing of site IQ System showing Satellite Controller numbers



Null-Modem Cable



Y-Cable

Install the NCC Configurator on your computer

The NCC Configurator Utility is automatically installed on your computer when you install the IQ Software (keycode activation is not required for this utility)

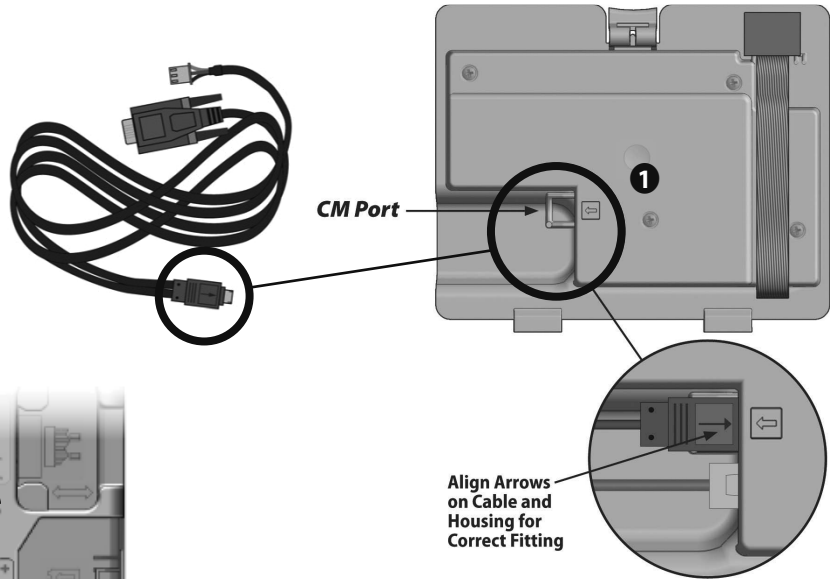
- 1 Insert the CD into the computer CD drive
- 2 If you do not have a CD drive, copy the IQ CD files onto a flash drive
- 3 If the install program does not start automatically, double-click on the Setup.exe file
- 4 Follow the prompts on the screen to install the IQ Software
- 5 When the IQ Software is installed double-click on the Rain Bird NCC Configurator icon on your computer Desktop to launch the Utility



**Rain Bird NCC
Configurator**

Connect the communication cables

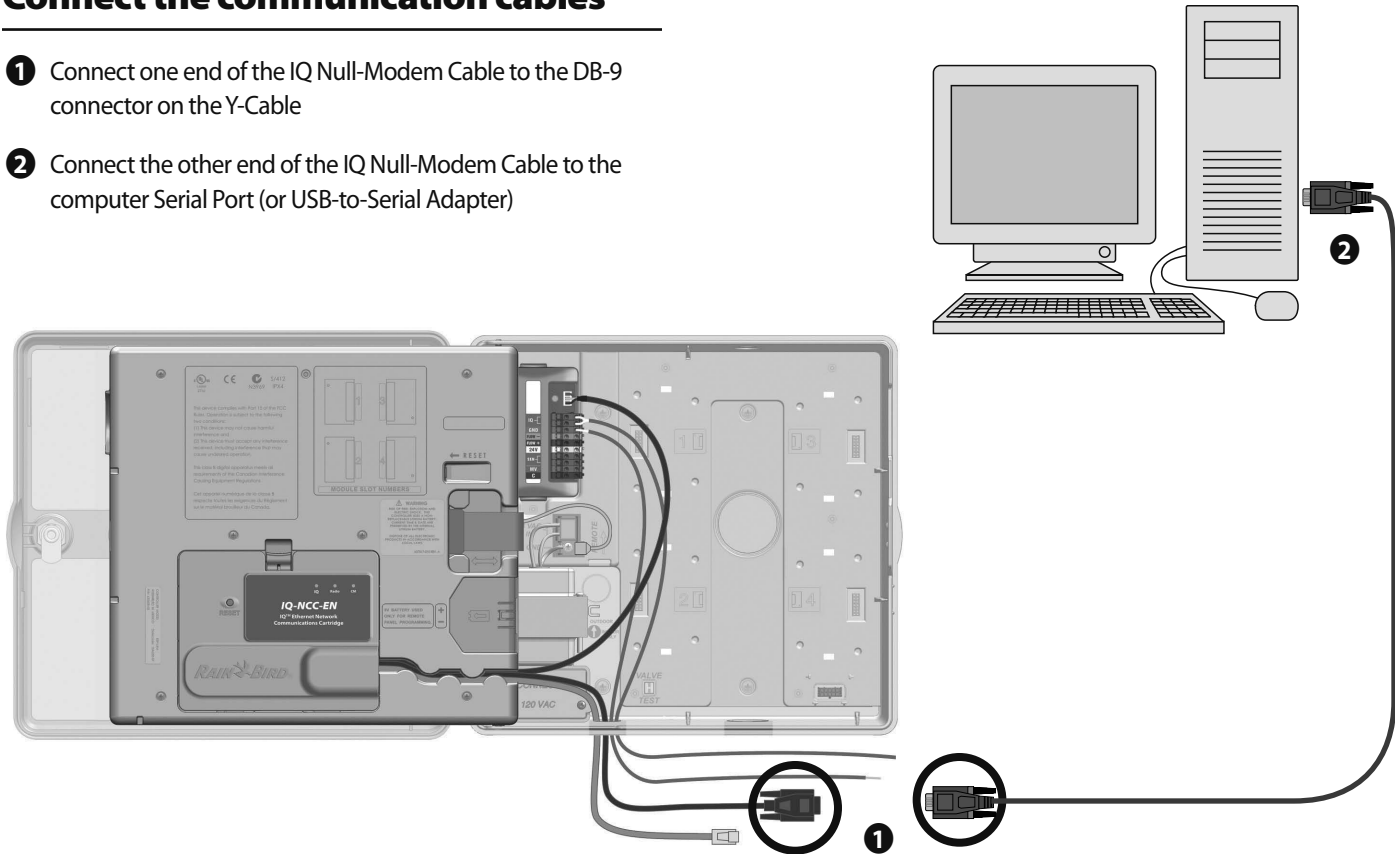
- 1 Connect the Y-Cable to the NCC Cartridge CM Port
- 2 Install the NCC Cartridge into the Controller



2

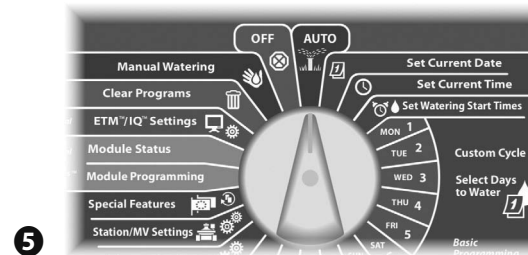
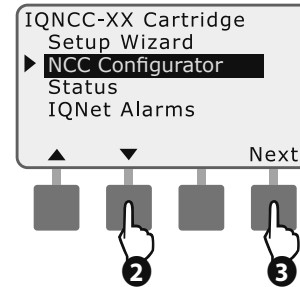
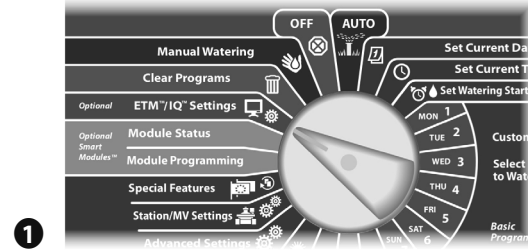
Connect the communication cables

- 1 Connect one end of the IQ Null-Modem Cable to the DB-9 connector on the Y-Cable
- 2 Connect the other end of the IQ Null-Modem Cable to the computer Serial Port (or USB-to-Serial Adapter)



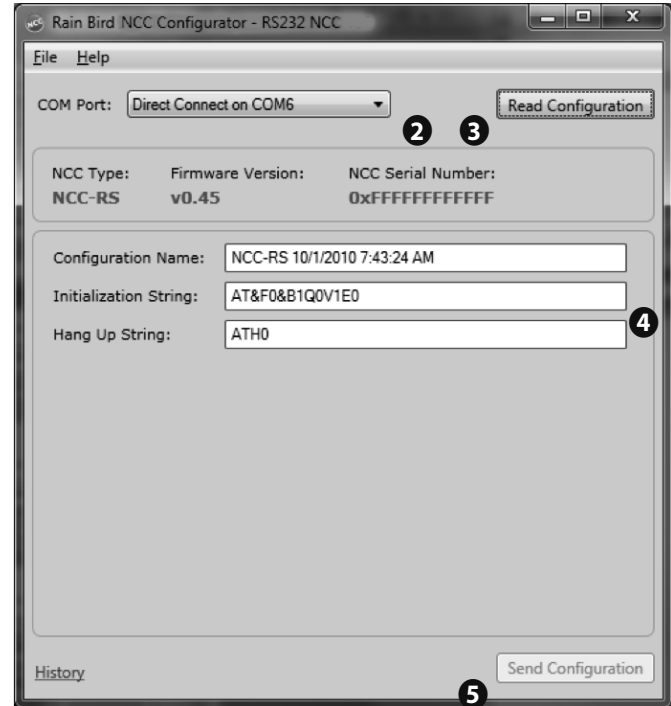
Set the NCC to NCC Configurator Mode

- 1 Turn the IQ Satellite dial to the **IQ Settings** position
- 2 Use the down arrow button to highlight **NCC Configurator** from the menu then press Next
- 3 After confirming the communication cables are installed correctly press **Next**
- 4 Press the **ON** button to activate IQ Software Config Mode
- 5 To cancel IQ Software Config Mode turn IQ Satellite dial to **Auto**



Using the NCC Configurator

- 1 Launch the **NCC Configurator Utility** on the computer
- 2 Click the drop-down arrow to select the computer **COM Port** number to which the Null Modem Cable is connected
- 3 Click on the **Read Configuration** button to retrieve the current communication configuration settings from the NCC Cartridge
 - The configuration setting fields will be blank or contain default values if the NCC Cartridge has never been configured previously
- 4 Enter/edit the configuration settings
 - Configuration Name: Specific name to identify this satellite in the configuration History log
 - Configuration fields will be specific to the type of cartridge connected
- 5 Click **Send Configuration button** to send configuration to the NCC cartridge



NCC-PH Configuration

- 1 The NCC-PH Phone Cartridge does not require configuration with the NCC Configurator
- 2 For IQ Software initiated communication, enter the phone number for the IQ Satellite in the IQ Software. The IQ Satellite will answer the call from the IQ Software automatically.
- 3 For IQ Satellite Call-in (satellite initiated communication mode option available with the IQ Advanced Communication Feature Pack), you will need to initiate communication to the satellite from the IQ software one time to send the Call-in settings before the satellite will be able to Call-in:
 - A Connect the NCC-PH Cartridge to the phone line.
 - B In the IQ Software, Auto Contacts button, configure the satellite for IQ Call-in.
 - C Manually synchronize the satellite from the IQ Software one time making sure the satellite answers this call.
 - D Once the satellite is synchronized it will call-in to the IQ computer to receive daily programming and post logs.



NCC-GP Configuration

- **IP Address:** The address is retrieved automatically from the installed SIM Card
- **Port Number:** Default Port is 50005
- **Access Point:** This information is provided by your GPRS/ Cellular Service Provider (AT&T Access Point = rainbird.com)
- **User Name:** The user name for your GPRS/Cellular Service Provider Access Point account (if required)
- **Password:** Password for your GPRS/Cellular Service Provider Access Point account (if required)
- **Frequency Band:** Use drop down menu to make selection
- **IMEI Number:** The number is retrieved automatically from the internal GPRS modem

Rain Bird NCC Configurator - GPRS NCC

File Help

COM Port: Direct Connect on COM1

NCC Type: NCC-GP Firmware Version: v0.31 NCC Serial Number: 0xFFFFFFFF

Configuration Name: NCC-GP 8/27/2010 12:54:30 PM

IP Address: 0.0.0.0

Port Number: 50005

Access Point: rainbird.com

User Name:

Password:

Frequency Band: North America (GSM-850, GSM-1900)

IMEI Number:

History

Note: User name & password is not required for the AT&T rainbird.com access point

NCC-EN Configuration

- **IP Address:** The network address assigned to this cartridge (assigned by your Network Administrator)
- **Port Number:** Default Port is 50005
- **Subnet Mask:** The Subnet Mask address (provided by your Network Administrator)
- **Default Gateway:** The Default Gateway Address (provided by your Network Administrator)
- **MAC Address:** The identification number is retrieved automatically from the internal Ethernet device

The screenshot shows the 'Rain Bird NCC Configurator - Ethernet NCC' window. At the top, there is a menu bar with 'File' and 'Help'. Below the menu bar, the 'COM Port' is set to 'Direct Connect on COM1' with a dropdown arrow, and a 'Read Configuration' button is to its right. A status section displays 'NCC Type: NCC-EN', 'Firmware Version: v0.31', and 'NCC Serial Number: 0xFFFFFFFF'. The main configuration area contains several text input fields: 'Configuration Name' (NCC-EN 8/27/2010 1:29:11 PM), 'IP Address' (0.0.0.0), 'Port Number' (50005), 'Subnet Mask' (0.0.0.0), 'Default Gateway' (0.0.0.0), and 'MAC Address' (empty). At the bottom left, there is a 'History' link, and at the bottom right, there is a 'Send Configuration' button.

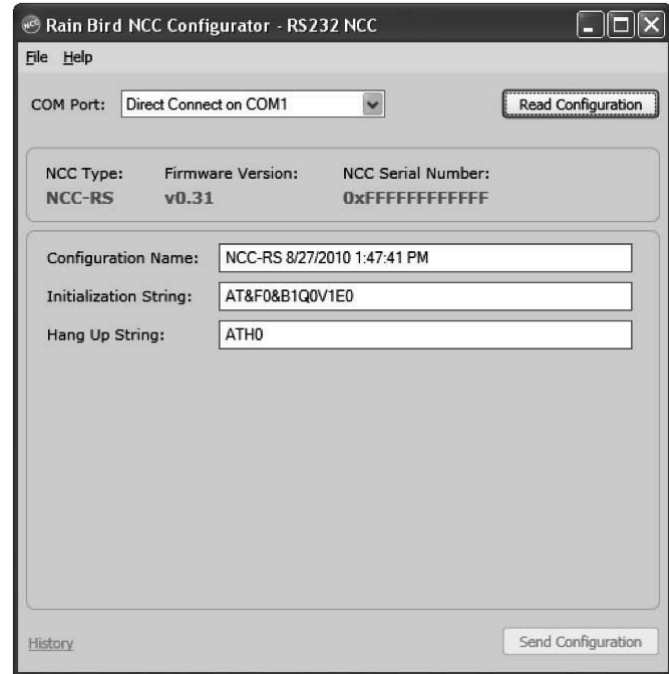
NCC-WF Configuration

- **SSID:** Network Identification (provided by your Network Administrator)
- **Encryption Method:** WPA or WPA2 (set by your Network Administrator)
- **Encryption Passkey:** Passkey (provided by your Network Administrator)
- **IP Address:** The Network Address assigned to this cartridge (assigned by your Network Administrator)
- **Port Number:** Default Port is 50005
- **Netmask:** The Netmask Address (provided by your Network Administrator)
- **Default Gateway:** The Gateway Address (provided by your Network Administrator)
- **Country Code:** Select country or region from the list
- **MAC Address:** This Identification Number is retrieved automatically from the internal WiFi device

The screenshot shows the Rain Bird NCC Configurator - WiFi NCC application window. The interface includes a menu bar with 'File' and 'Help'. Below the menu bar, there is a 'COM Port' dropdown menu set to 'Direct Connect on COM6' and a 'Read Configuration' button. A status section displays 'NCC Type: NCC-WF', 'Firmware Version: v0.45', and 'NCC Serial Number: 0xFFFFFFFF'. The main configuration area contains several fields: 'Configuration Name' (NCC-WF 10/1/2010 8:25:49 AM), 'SSID' (empty), 'Encryption Method' (Disabled), 'Encryption Passkey' (empty), 'IP Address' (0.0.0.0), 'Port Number' (50005), 'Subnet Mask' (0.0.0.0), 'Default Gateway' (0.0.0.0), 'Country Code' (USA), and 'MAC Address' (empty). At the bottom, there is a 'History' label and a 'Send Configuration' button.

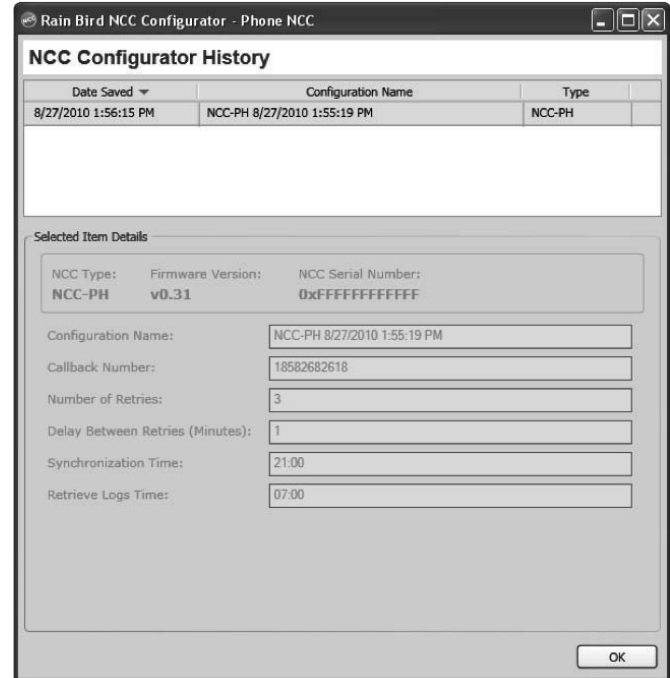
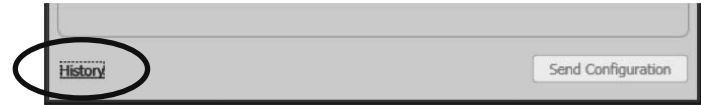
NCC-RS Configuration

- NCC-RS Configuration not required for Direct-Connect Cable or IQRSSRADIO communication mode
- NCC-RS Configuration may be for External Modem communication mode
- **Initialization String:** Required for some external modems (consult the external modem manual for required settings)
- **Hang Up String:** Required for some external modems (consult the external modem manual for required settings)



NCC Configuration History

- Click on the **History** link on the bottom of the NCC Configurator dialog box to retrieve a log of the previously sent NCC Cartridge Configuration settings
 - Log is labeled with the Configuration Name entered in specific NCC Cartridge configuration screen
 - Each log is date and time stamped
 - Click on a log entry to view the configuration sent to that NCC cartridge





Rain Bird Corporation

6991 E. Southpoint Road
Tucson, AZ 85756
Phone: (520) 741-6100
Fax: (520) 741-6522

Rain Bird Technical Services

(800) RAINBIRD (1-800-724-6247)
(U.S. and Canada)

Rain Bird Corporation

970 West Sierra Madre Avenue
Azusa, CA 91702
Phone: (626) 812-3400
Fax: (626) 812-3411

Specification Hotline

800-458-3005 (U.S. and Canada)

Rain Bird International, Inc.

1000 West Sierra Madre Ave.
Azusa, CA 91702
Phone: (626) 963-9311
Fax: (626) 852-7343

The Intelligent Use of Water™

www.rainbird.com