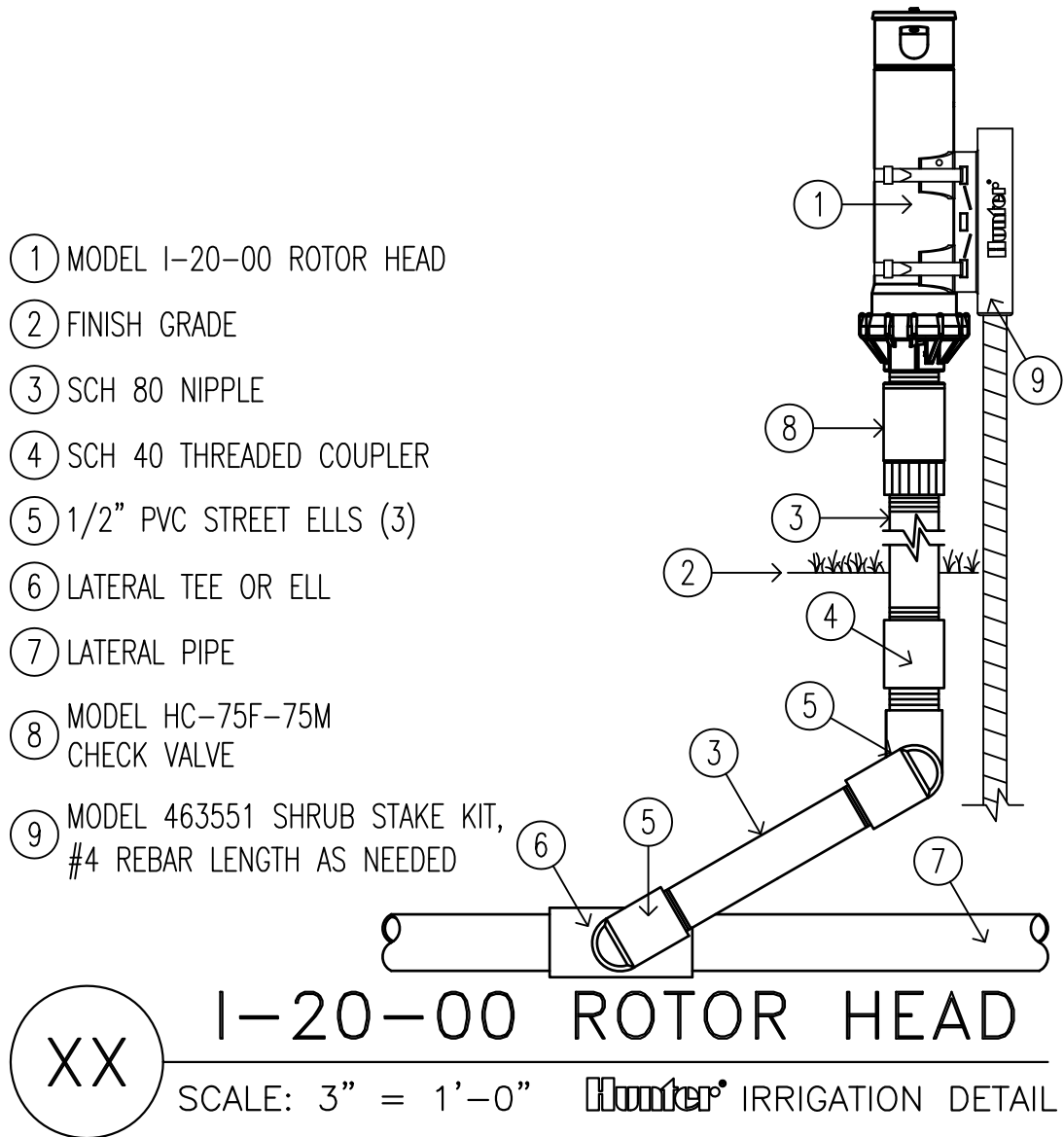


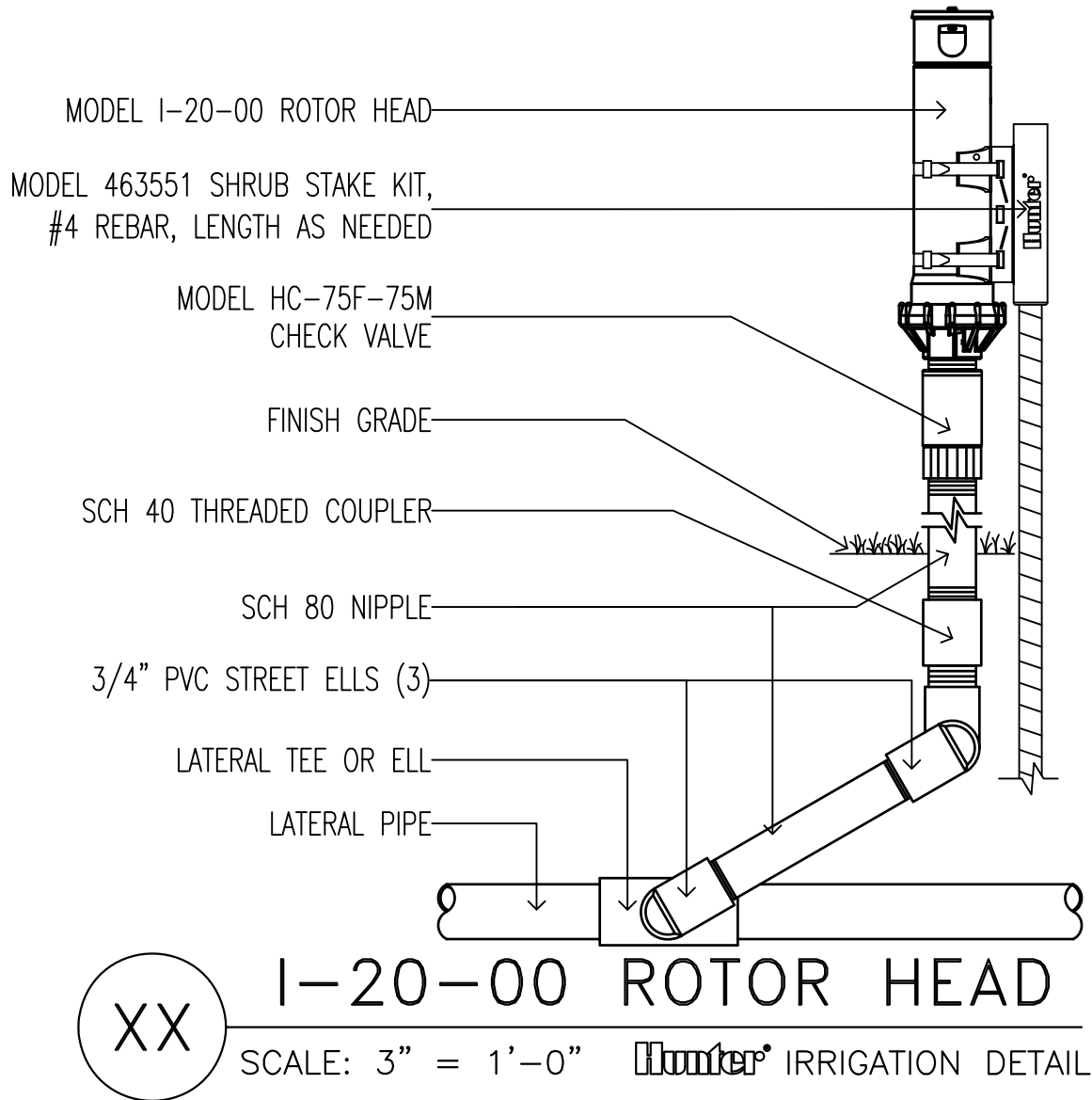
When using larger GPM nozzles, beware of high friction loss in swing joints.



OPTIONS:

☐ R = FACTORY INSTALLED RECLAIMED RUBBER COVER

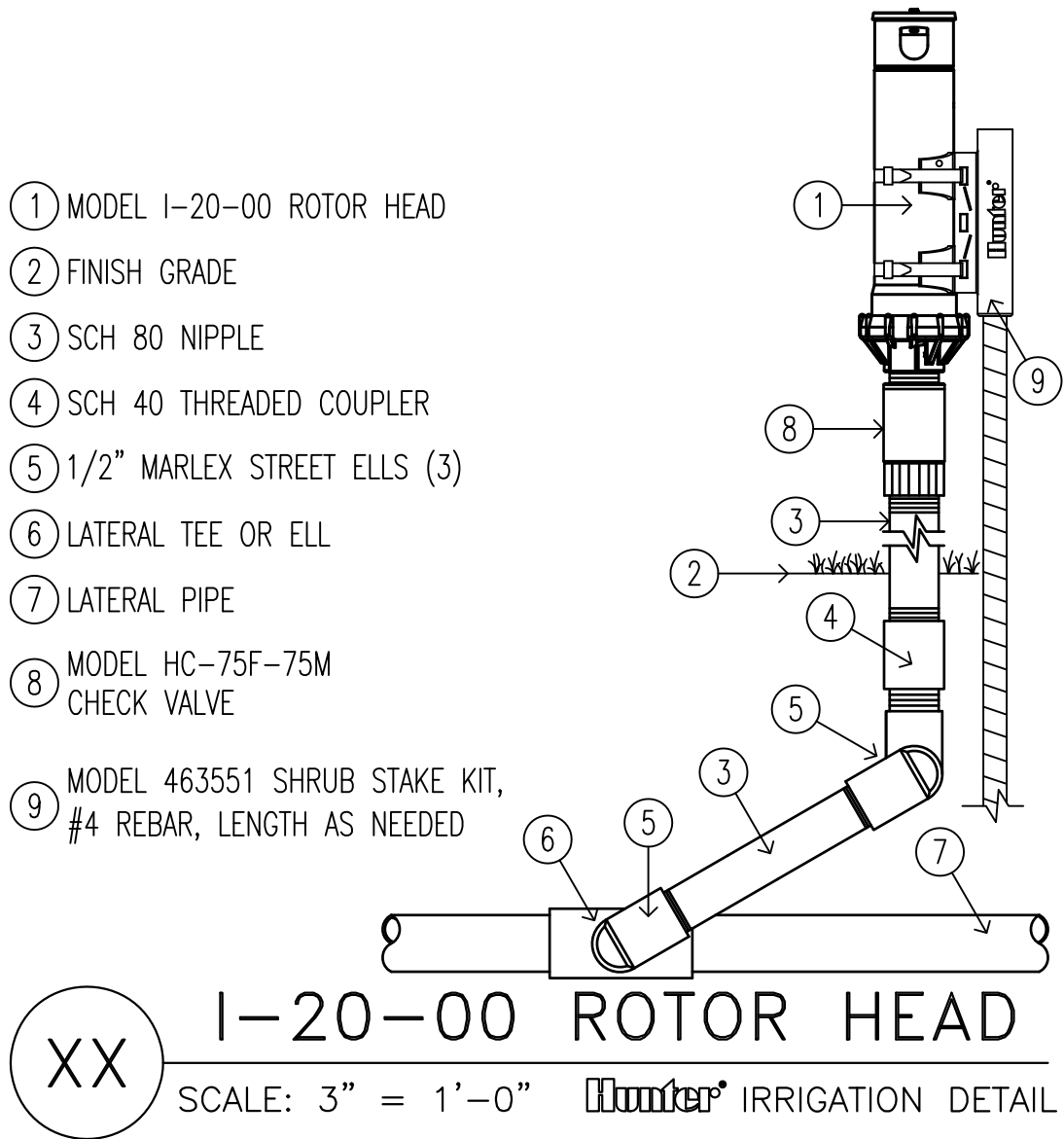
*When using larger GPM nozzles, beware of high friction loss in swing joints.



OPTIONS:

☐ R = FACTORY INSTALLED RECLAIMED RUBBER COVER

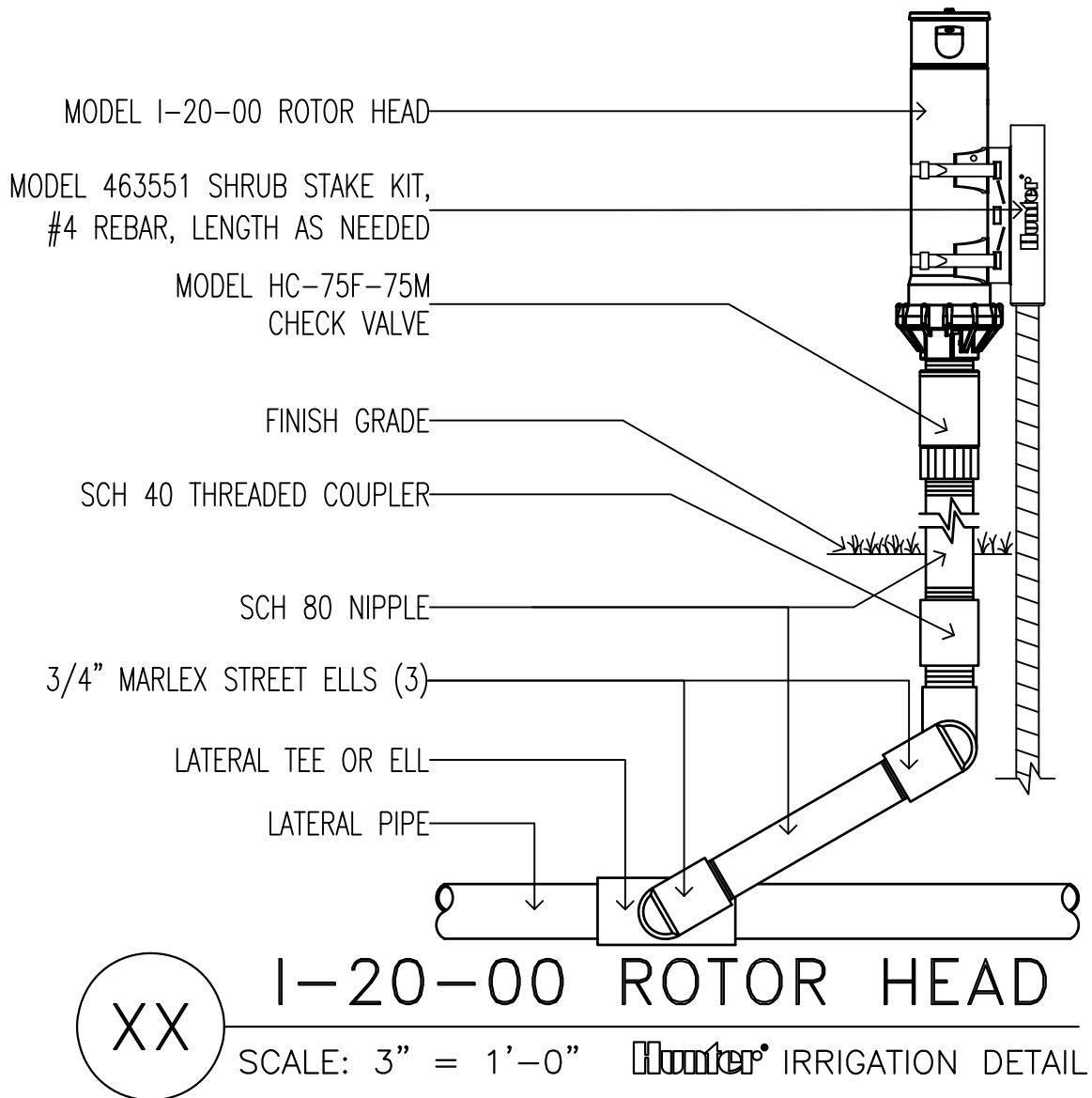
When using larger GPM nozzles, beware of high friction loss in swing joints.



OPTIONS:

☐ R = FACTORY INSTALLED RECLAIMED RUBBER COVER

*When using larger GPM nozzles, beware of high friction loss in swing joints.

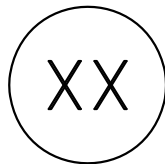
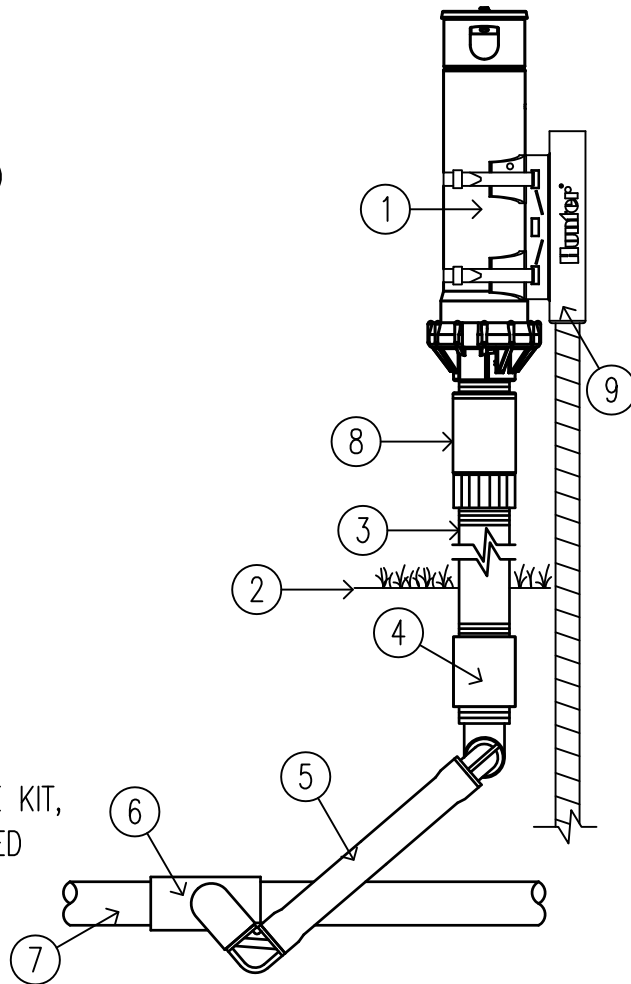


OPTIONS:

☐ R = FACTORY INSTALLED RECLAIMED RUBBER COVER

When using larger GPM nozzles, beware of high friction loss in swing joints.

- ① MODEL I-20-00 ROTOR HEAD
- ② FINISH GRADE
- ③ SCH 80 NIPPLE
- ④ SCH 40 THREADED COUPLER
- ⑤ HUNTER SWING JOINT
MODEL SJ-5XX-X
- ⑥ LATERAL TEE OR ELL
- ⑦ LATERAL PIPE
- ⑧ MODEL HC-75F-75M
CHECK VALVE
- ⑨ MODEL 463551 SHRUB STAKE KIT,
#4 REBAR, LENGTH AS NEEDED



I-20-00 ROTOR HEAD

SCALE: 3" = 1'-0"

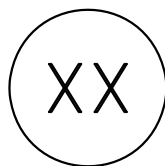
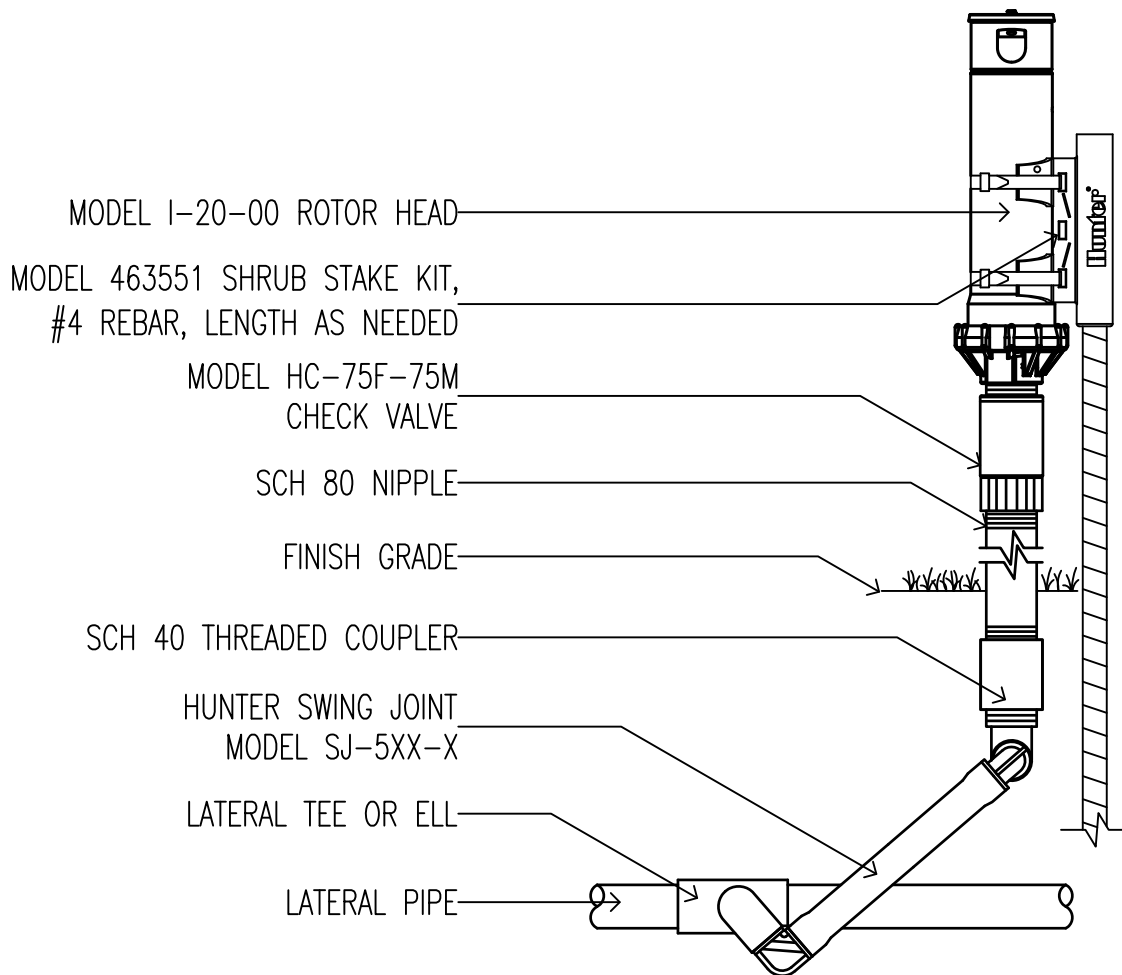


IRRIGATION DETAIL

OPTIONS:

☐ R = FACTORY INSTALLED RECLAIMED RUBBER COVER

*When using larger GPM nozzles, beware of high friction loss in swing joints.



I-20-00 ROTOR HEAD

SCALE: 3" = 1'-0"



IRRIGATION DETAIL

OPTIONS:

☐ R = FACTORY INSTALLED RECLAIMED RUBBER COVER

*When using larger GPM nozzles, beware of high friction loss in swing joints.

① MODEL I-20-00 ROTOR HEAD

② FINISH GRADE

③ SCH 80 NIPPLE

④ SCH 40 THREADED COUPLER

SWING JOINT:

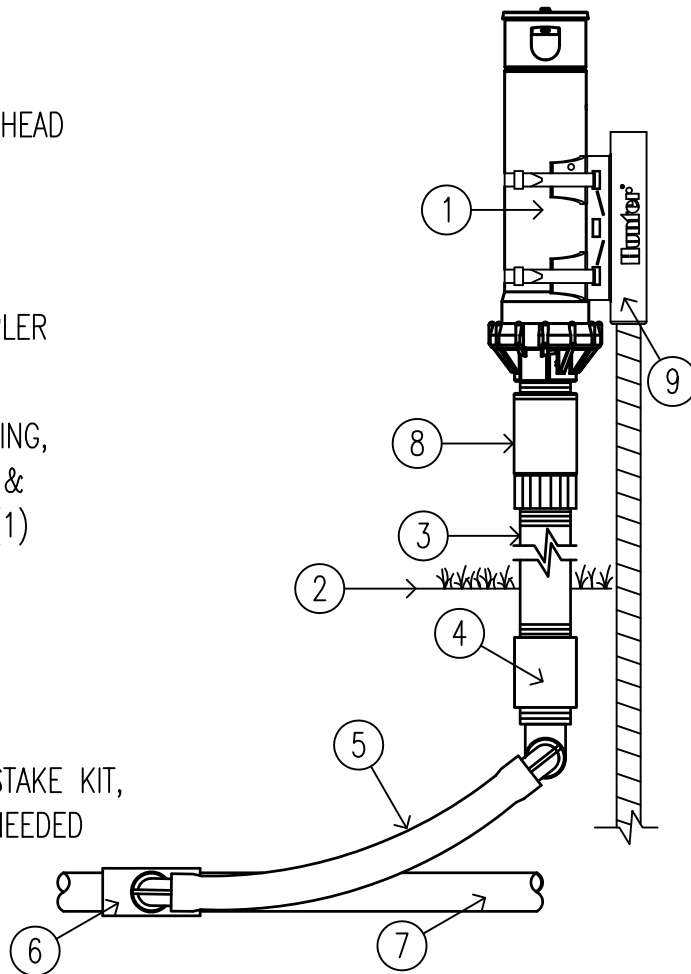
⑤ HUNTER 'PRO-FLEX' TUBING,
HSBE-050 ELBOWS (2), &
MARLEX STREET ELBOW (1)

⑥ LATERAL TEE OR ELL

⑦ LATERAL PIPE

⑧ MODEL HC-75F-75M
CHECK VALVE

⑨ MODEL 463551 SHRUB STAKE KIT,
#4 REBAR, LENGTH AS NEEDED



XX I-20-00 ROTOR HEAD

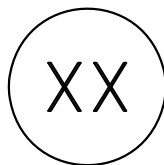
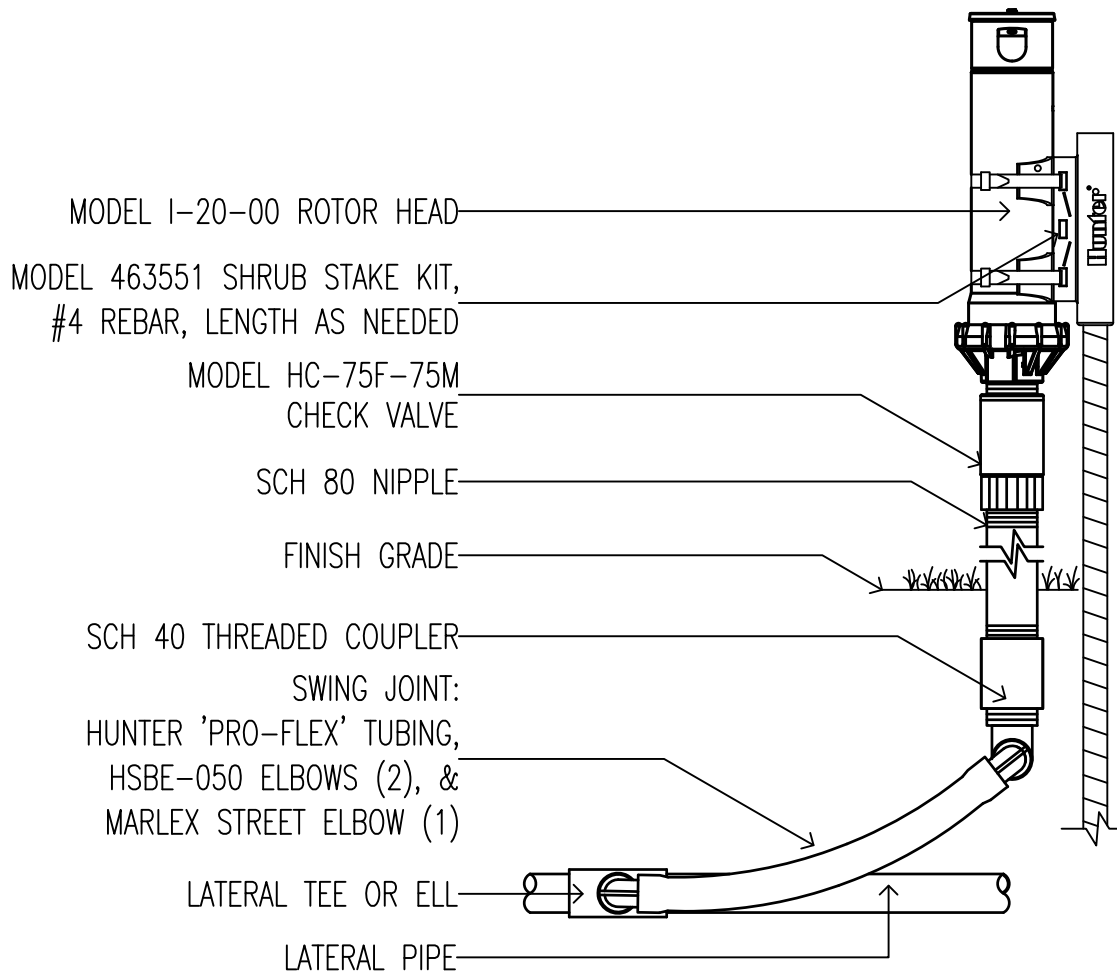
SCALE: 3" = 1'-0"

Hunter IRRIGATION DETAIL

OPTIONS:

☐ R = FACTORY INSTALLED RECLAIMED RUBBER COVER

*When using larger GPM nozzles, beware of high friction loss in swing joints.



I-20-00 ROTOR HEAD

SCALE: 3" = 1'-0"

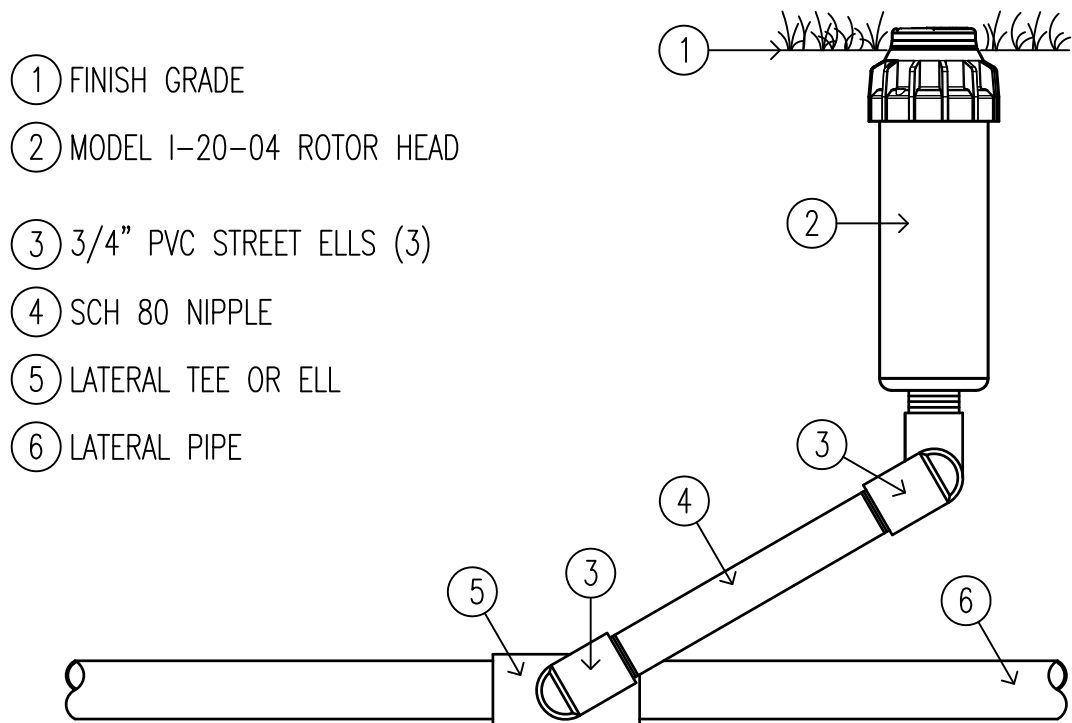


IRRIGATION DETAIL

OPTIONS:

☐ R = FACTORY INSTALLED RECLAIMED RUBBER COVER

*When using larger GPM nozzles, beware of high friction loss in swing joints.



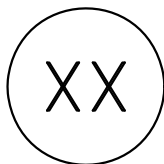
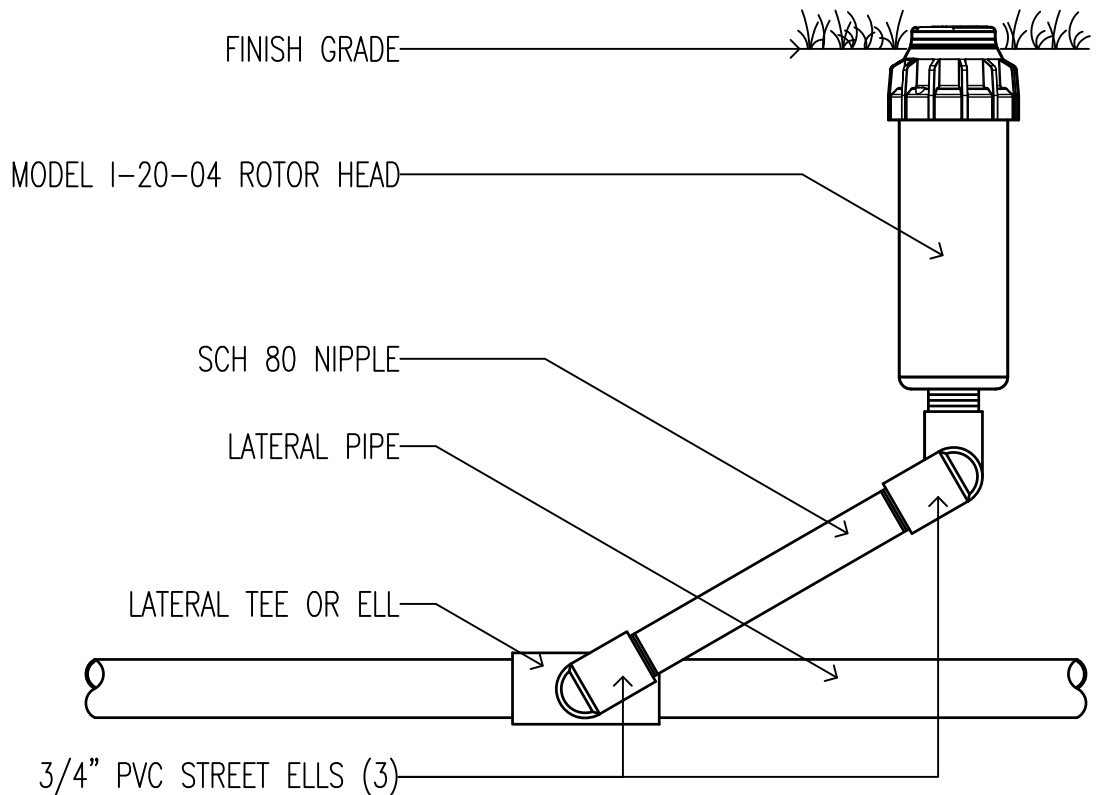
XX I-20-04 ROTOR HEAD

SCALE: 3" = 1'-0" **Hunter** IRRIGATION DETAIL

OPTIONS:

- ☐ R = FACTORY INSTALLED RECLAIMED RUBBER COVER
- ☐ SS = STAINLESS STEEL RISER

*When using larger GPM nozzles, beware of high friction loss in swing joints.



I-20-04 ROTOR HEAD

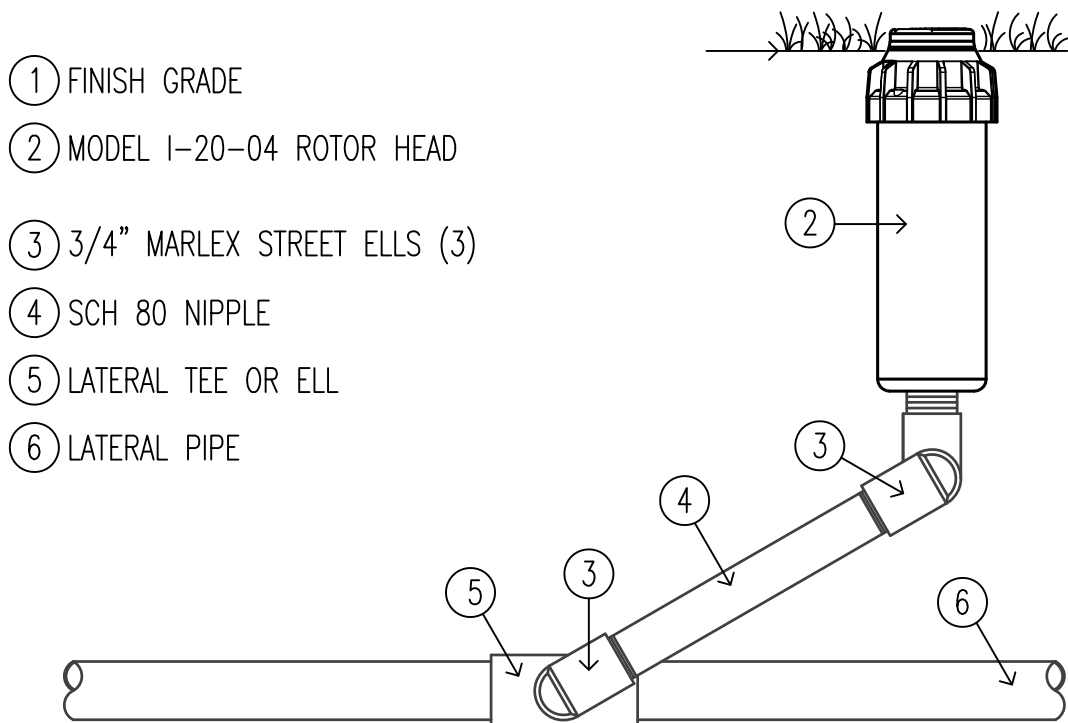
SCALE: 3" = 1'-0"

Hunter IRRIGATION DETAIL

OPTIONS:

- ☐ R = FACTORY INSTALLED RECLAIMED RUBBER COVER
- ☐ SS = STAINLESS STEEL RISER

*When using larger GPM nozzles, beware of high friction loss in swing joints.

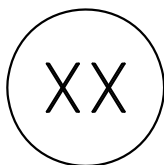
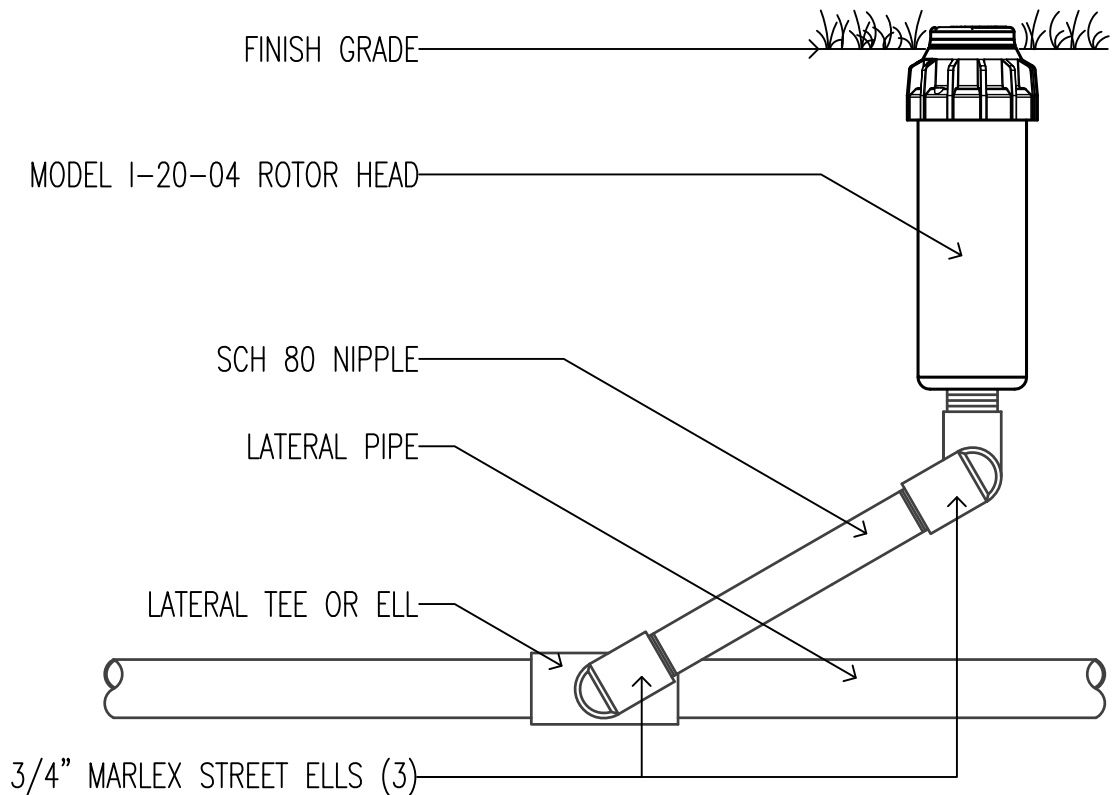


XX I-20-04 ROTOR HEAD
SCALE: 3" = 1'-0" Hunter IRRIGATION DETAIL

OPTIONS:

- ☐ R = FACTORY INSTALLED RECLAIMED RUBBER COVER
- ☐ SS = STAINLESS STEEL RISER

*When using larger GPM nozzles, beware of high friction loss in swing joints.



I-20-04 ROTOR HEAD

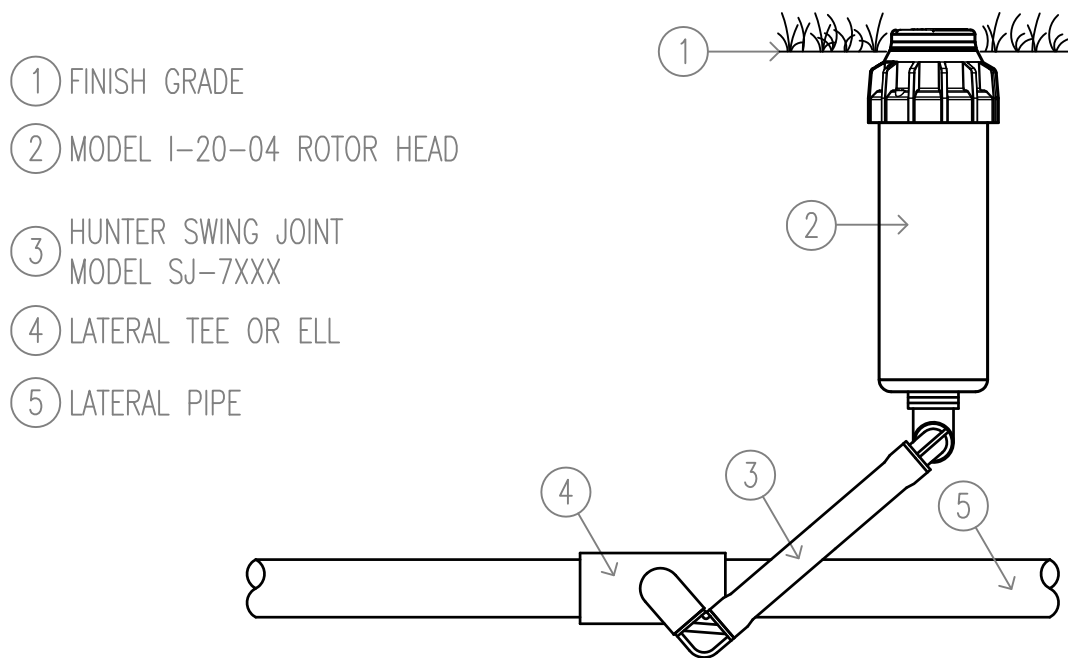
SCALE: 3" = 1'-0"

Hunter IRRIGATION DETAIL

OPTIONS:

- ☐ R = FACTORY INSTALLED RECLAIMED RUBBER COVER
- ☐ SS = STAINLESS STEEL RISER

*When using larger GPM nozzles, beware of high friction loss in swing joints.

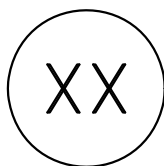
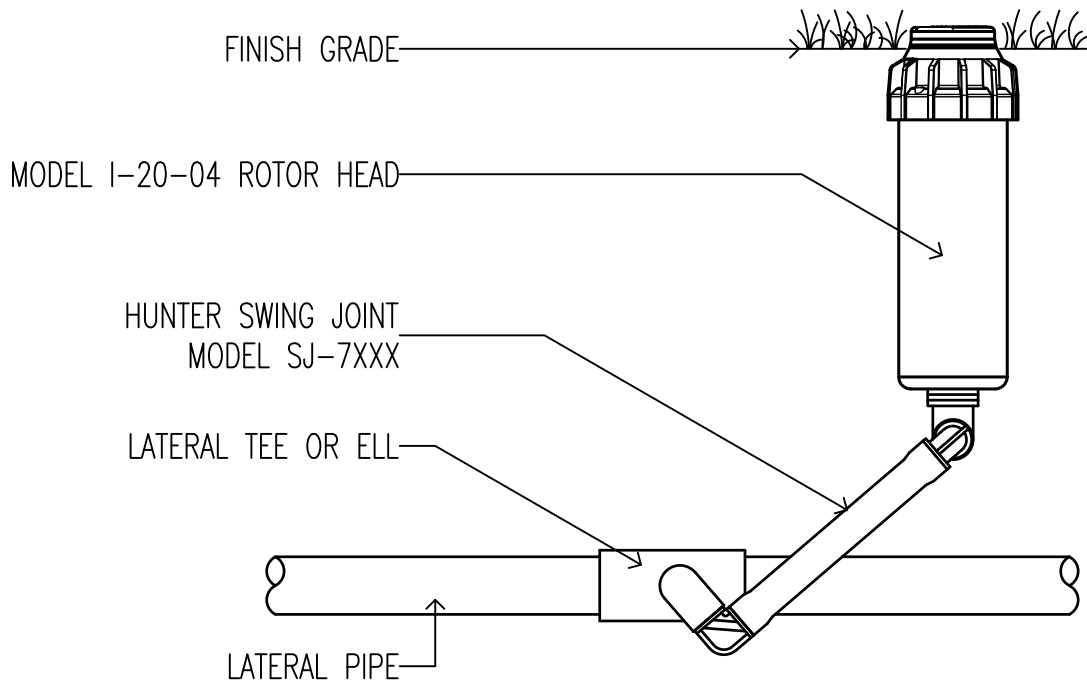


XX I-20-04 ROTOR HEAD
SCALE: 3" = 1'-0" Hunter IRRIGATION DETAIL

OPTIONS:

- ☐ R = FACTORY INSTALLED RECLAIMED RUBBER COVER
☐ SS = STAINLESS STEEL RISER

*When using larger GPM nozzles, beware of high friction loss in swing joints.



I-20-04 ROTOR HEAD

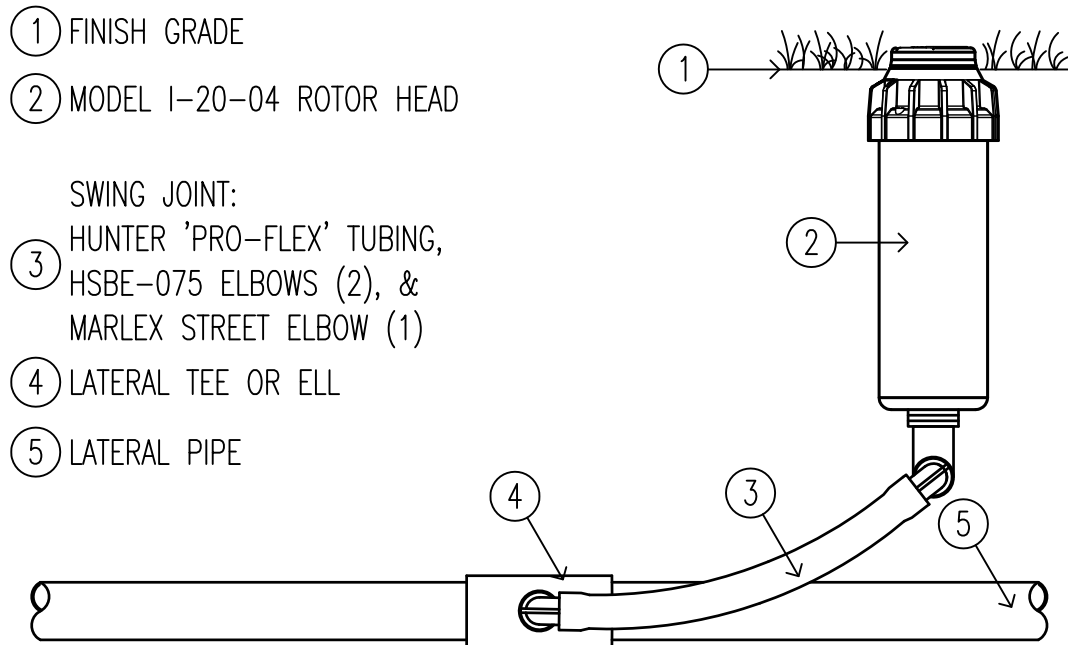
SCALE: 3" = 1'-0"

Hunter IRRIGATION DETAIL

OPTIONS:

- ☐ R = FACTORY INSTALLED RECLAIMED RUBBER COVER
- ☐ SS = STAINLESS STEEL RISER

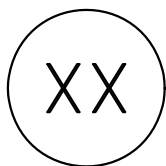
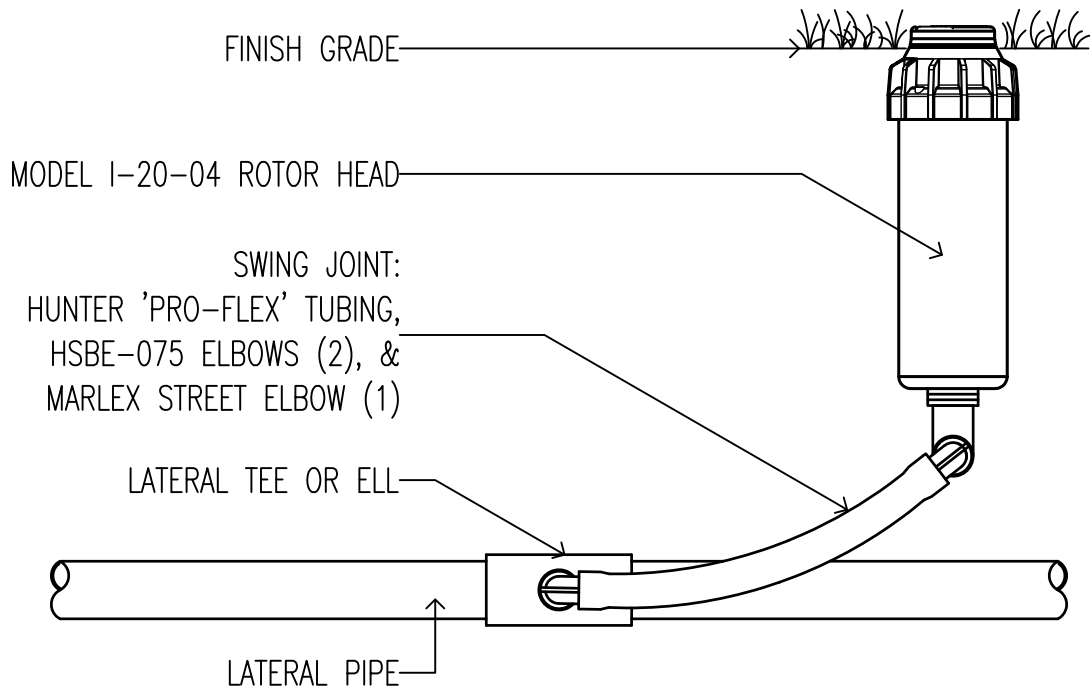
*When using larger GPM nozzles, beware of high friction loss in swing joints.



XX I-20-04 ROTOR HEAD
SCALE: 3" = 1'-0" Hunter IRRIGATION DETAIL

OPTIONS:
☐ R = FACTORY INSTALLED RECLAIMED RUBBER COVER
☐ SS = STAINLESS STEEL RISER

*When using larger GPM nozzles, beware of high friction loss in swing joints.



I-20-04 ROTOR HEAD

SCALE: 3" = 1'-0"

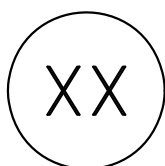
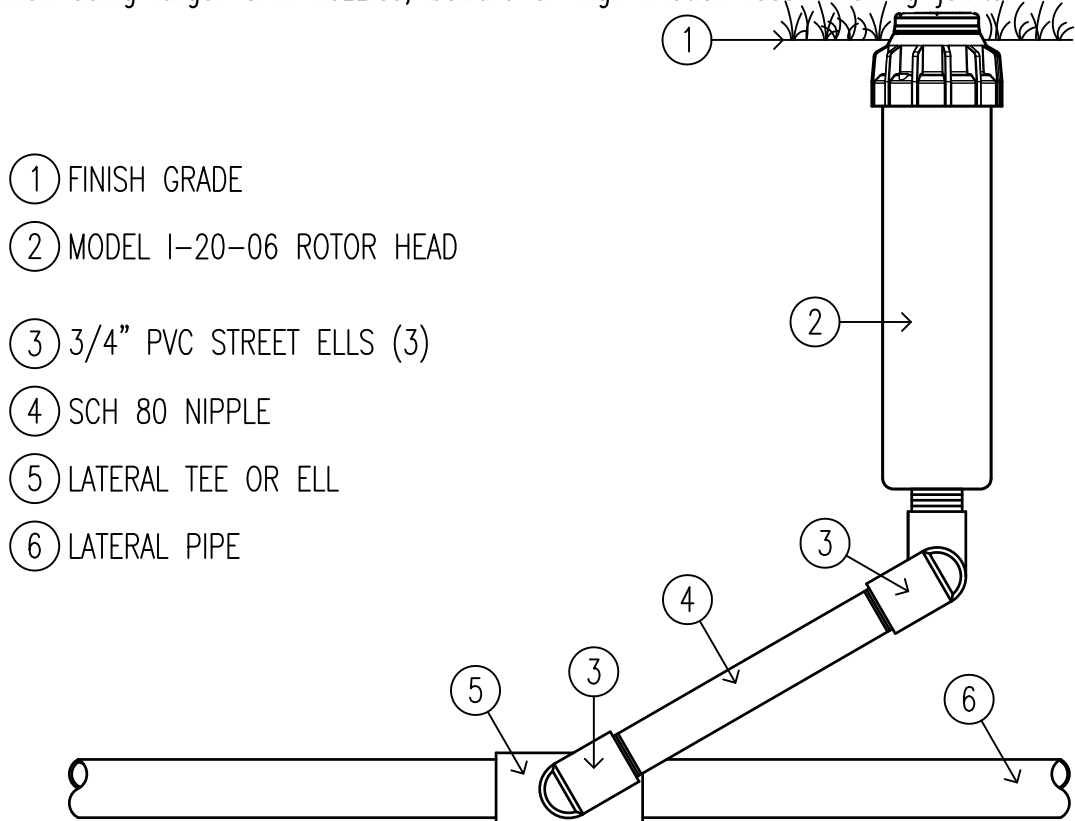


IRRIGATION DETAIL

OPTIONS:

- ☐ R = FACTORY INSTALLED RECLAIMED RUBBER COVER
- ☐ SS = STAINLESS STEEL RISER

*When using larger GPM nozzles, beware of high friction loss in swing joints.



I-20-06 ROTOR HEAD

SCALE: 3" = 1'-0"

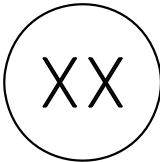
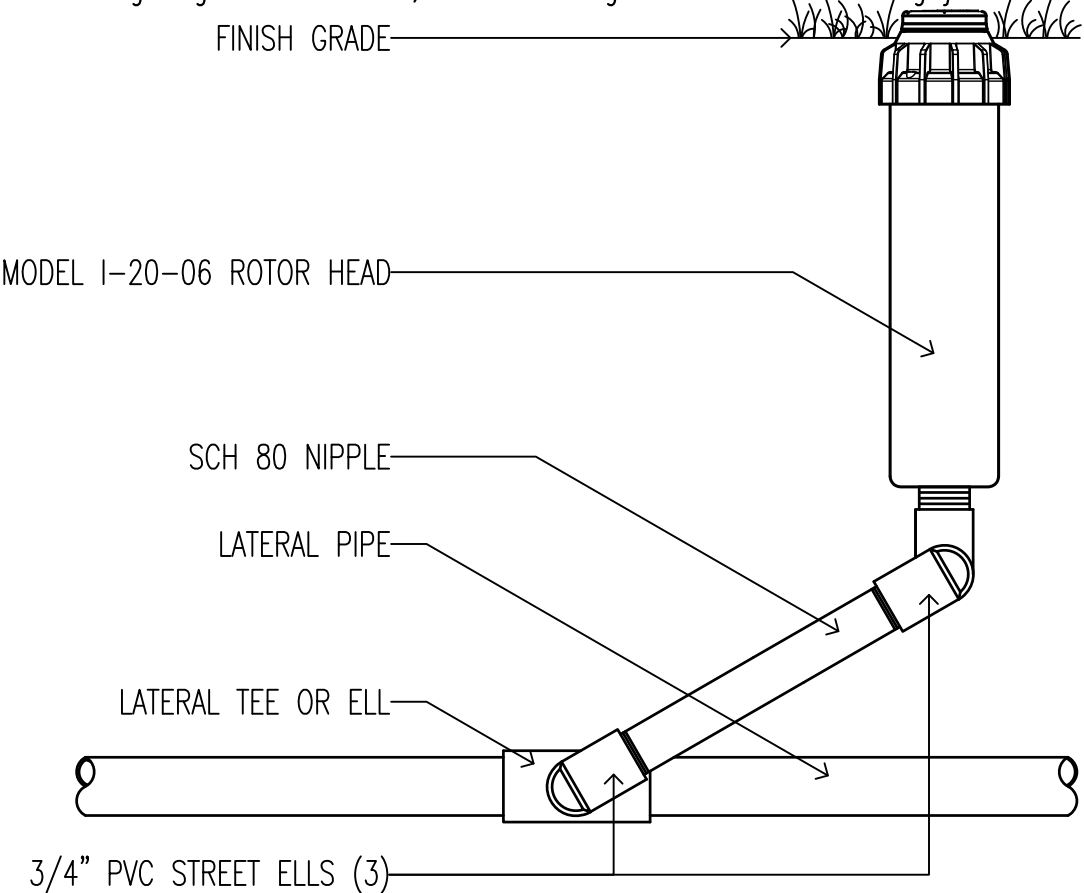
Hunter

IRRIGATION DETAIL

OPTIONS:

- ☐ R = FACTORY INSTALLED RECLAIMED RUBBER COVER
- ☐ SS = STAINLESS STEEL RISER

*When using larger GPM nozzles, beware of high friction loss in swing joints.



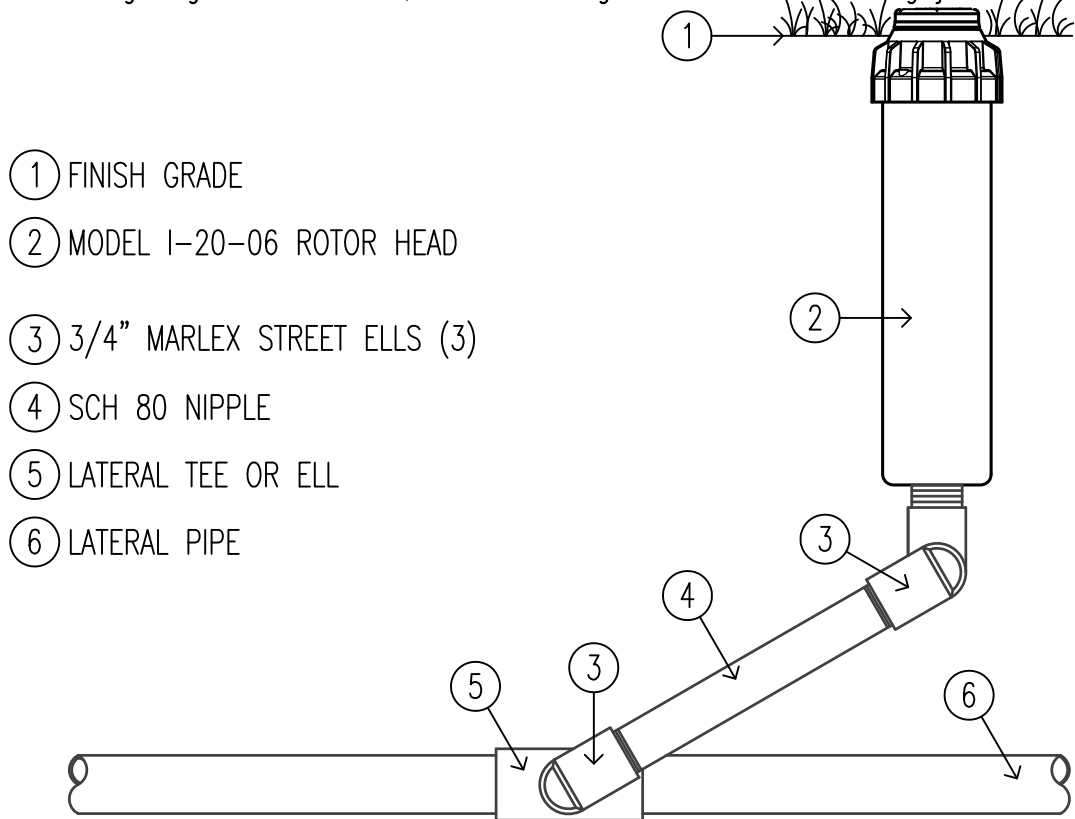
I-20-06 ROTOR HEAD

SCALE: 3" = 1'-0" **Hunter** IRRIGATION DETAIL

OPTIONS:

- ☐ R = FACTORY INSTALLED RECLAIMED RUBBER COVER
- ☐ SS = STAINLESS STEEL RISER

*When using larger GPM nozzles, beware of high friction loss in swing joints.



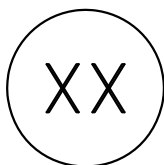
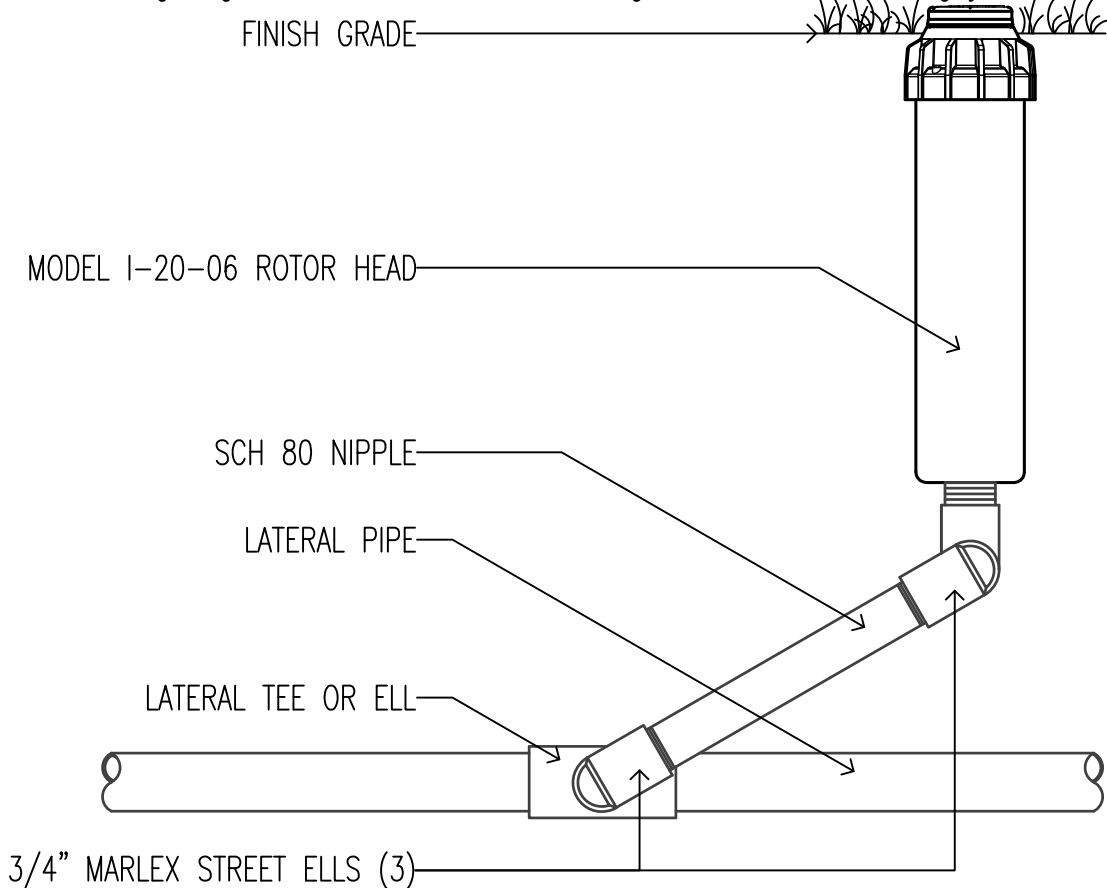
XX I-20-06 ROTOR HEAD

SCALE: 3" = 1'-0" Hunter IRRIGATION DETAIL

OPTIONS:

- ☐ R = FACTORY INSTALLED RECLAIMED RUBBER COVER
- ☐ SS = STAINLESS STEEL RISER

*When using larger GPM nozzles, beware of high friction loss in swing joints.



I-20-06 ROTOR HEAD

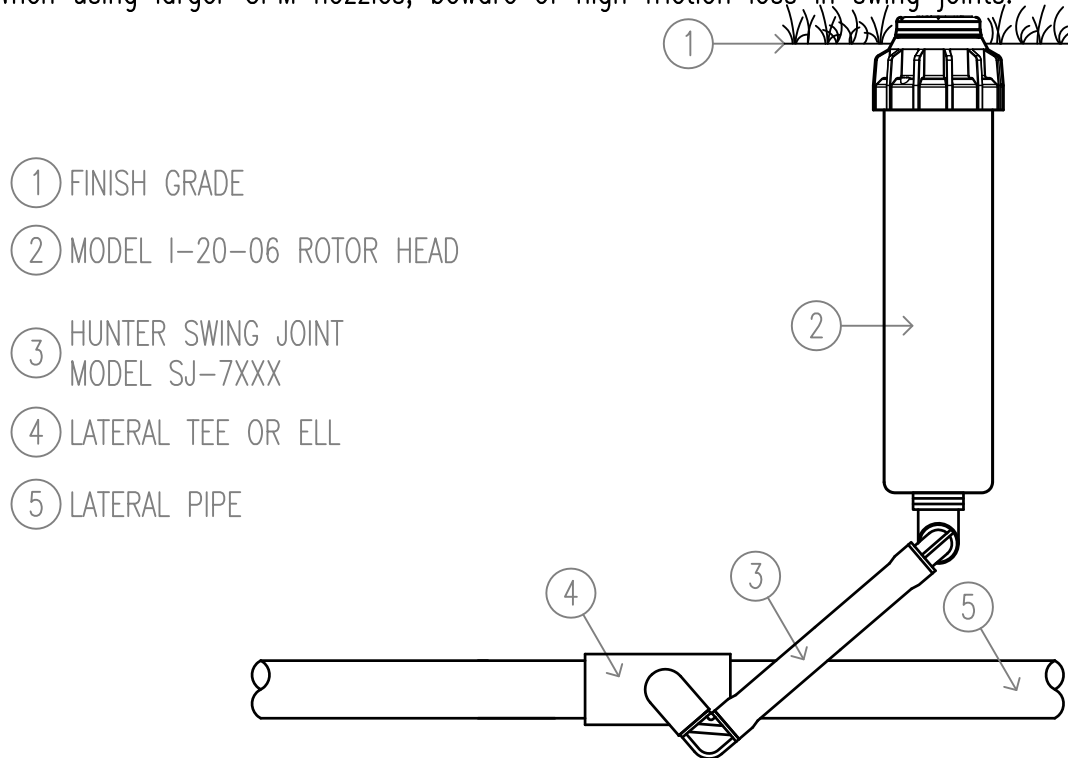
SCALE: 3" = 1'-0"

Hunter IRRIGATION DETAIL

OPTIONS:

- ☐ R = FACTORY INSTALLED RECLAIMED RUBBER COVER
- ☐ SS = STAINLESS STEEL RISER

*When using larger GPM nozzles, beware of high friction loss in swing joints.



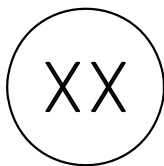
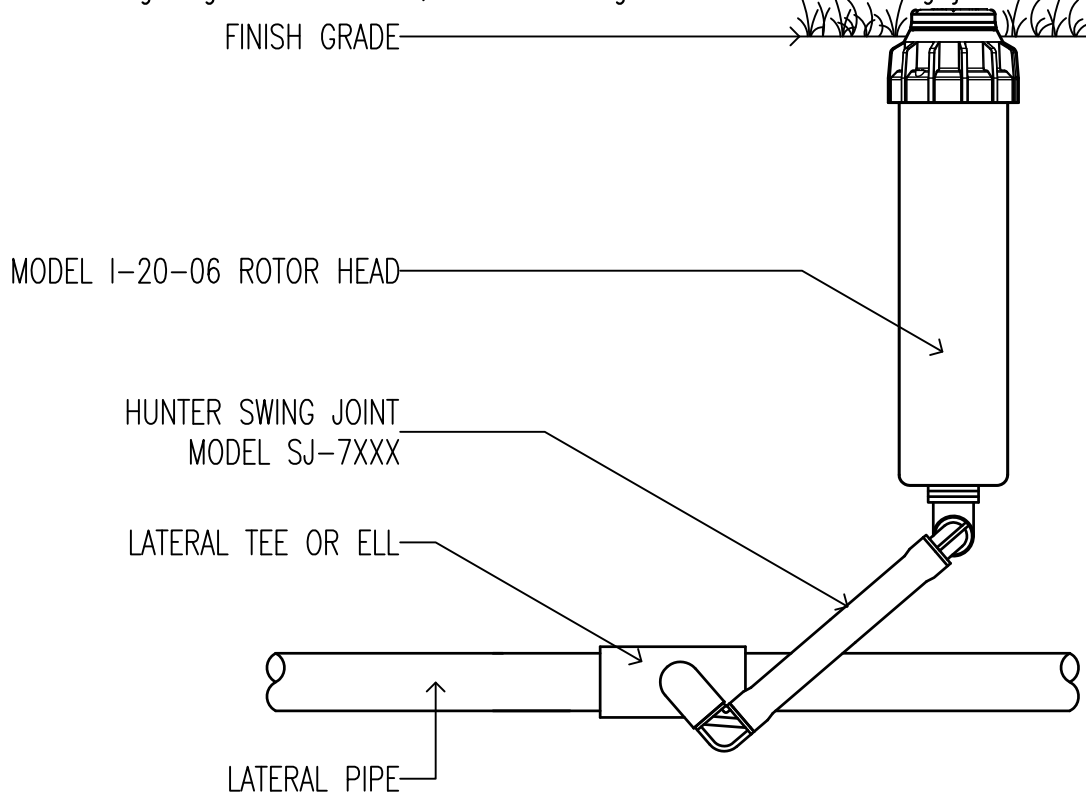
XX I-20-06 ROTOR HEAD

SCALE: 3" = 1'-0" Hunter IRRIGATION DETAIL

OPTIONS:

- ☐ R = FACTORY INSTALLED RECLAIMED RUBBER COVER
- ☐ SS = STAINLESS STEEL RISER

*When using larger GPM nozzles, beware of high friction loss in swing joints.



I-20-06 ROTOR HEAD

SCALE: 3" = 1'-0"

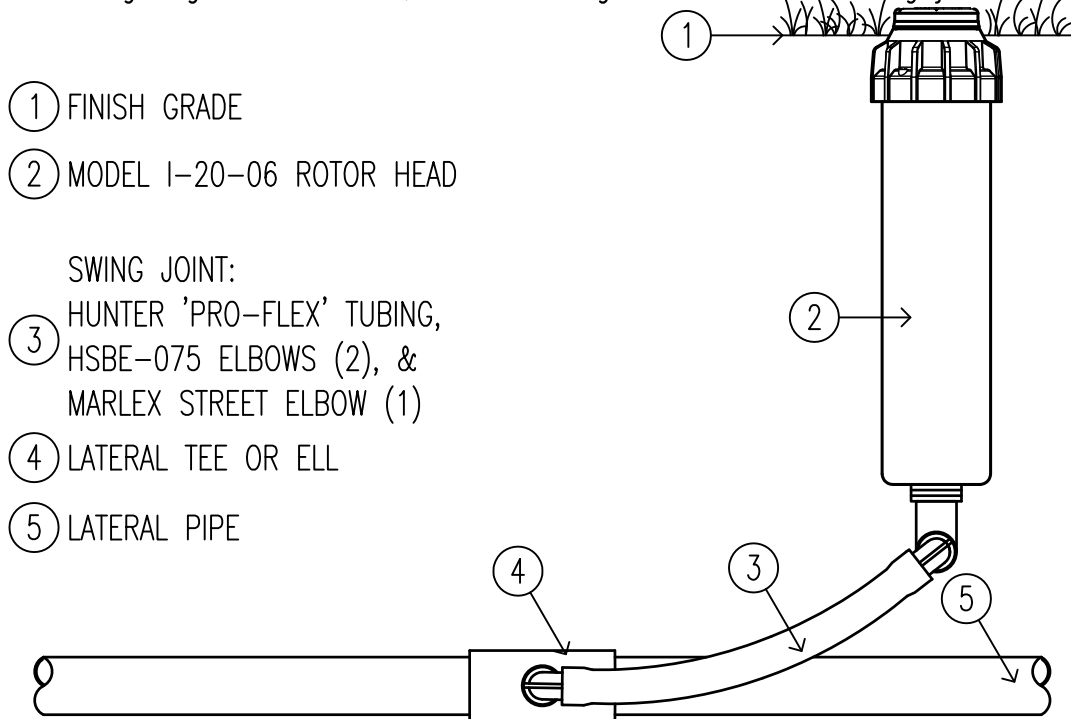
Hunter

IRRIGATION DETAIL

OPTIONS:

- ☐ R = FACTORY INSTALLED RECLAIMED RUBBER COVER
- ☐ SS = STAINLESS STEEL RISER

*When using larger GPM nozzles, beware of high friction loss in swing joints.



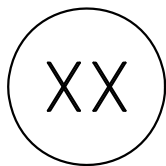
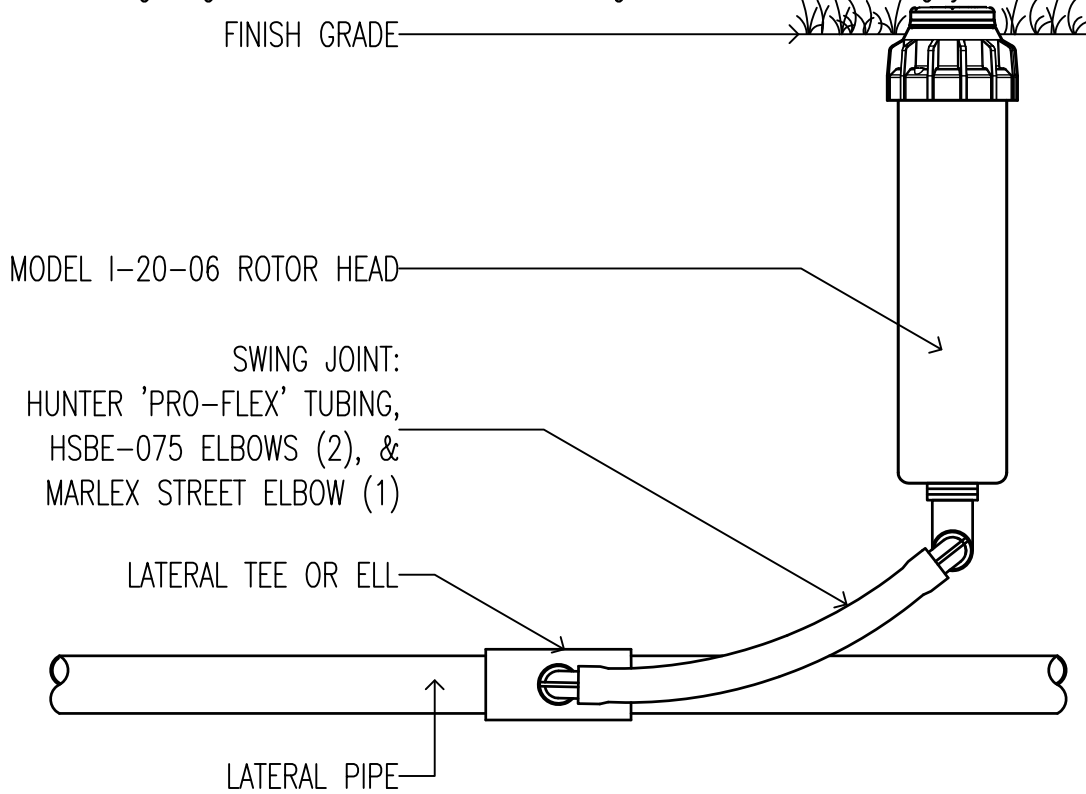
XX I-20-06 ROTOR HEAD

SCALE: 3" = 1'-0" Hunter IRRIGATION DETAIL

OPTIONS:

- ☐ R = FACTORY INSTALLED RECLAIMED RUBBER COVER
- ☐ SS = STAINLESS STEEL RISER

*When using larger GPM nozzles, beware of high friction loss in swing joints.



I-20-06 ROTOR HEAD

SCALE: 3" = 1'-0"

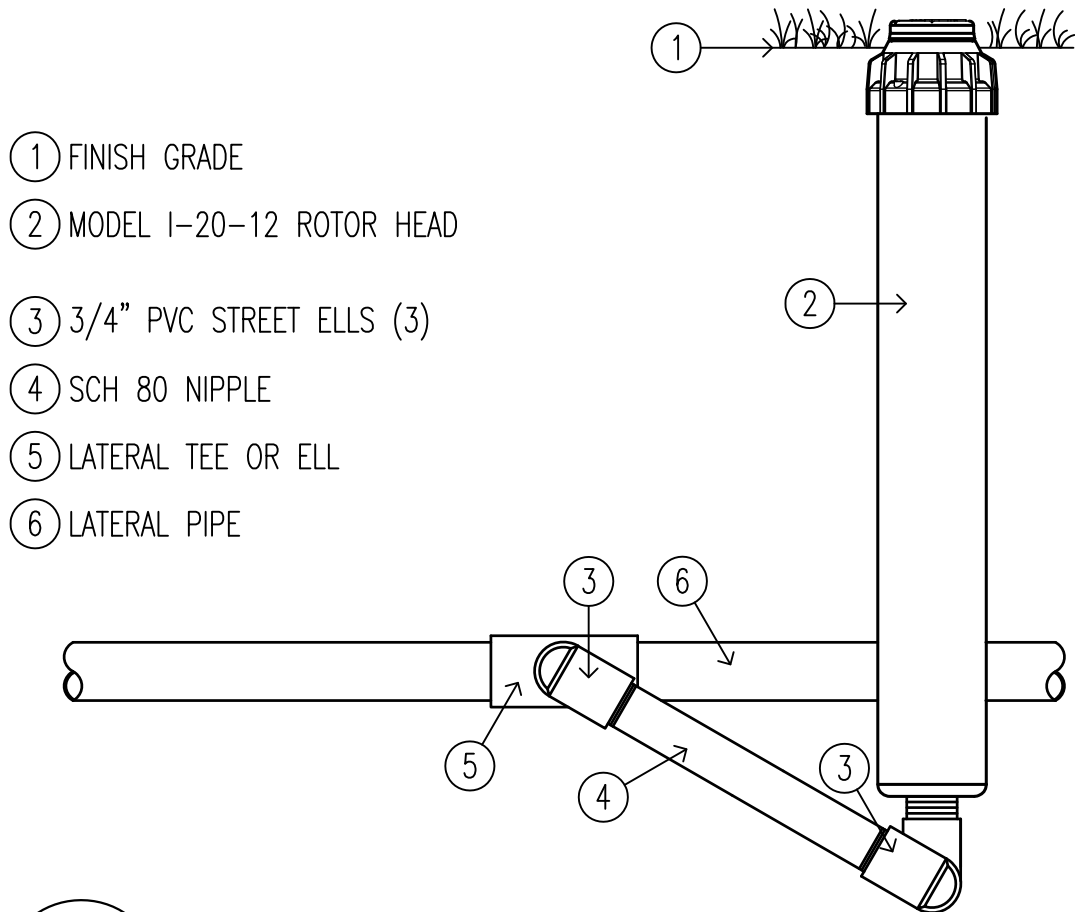
Hunter

IRRIGATION DETAIL

OPTIONS:

- ☐ R = FACTORY INSTALLED RECLAIMED RUBBER COVER
- ☐ SS = STAINLESS STEEL RISER

*When using larger GPM nozzles, beware of high friction loss in swing joints.

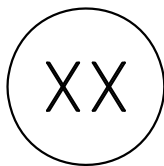
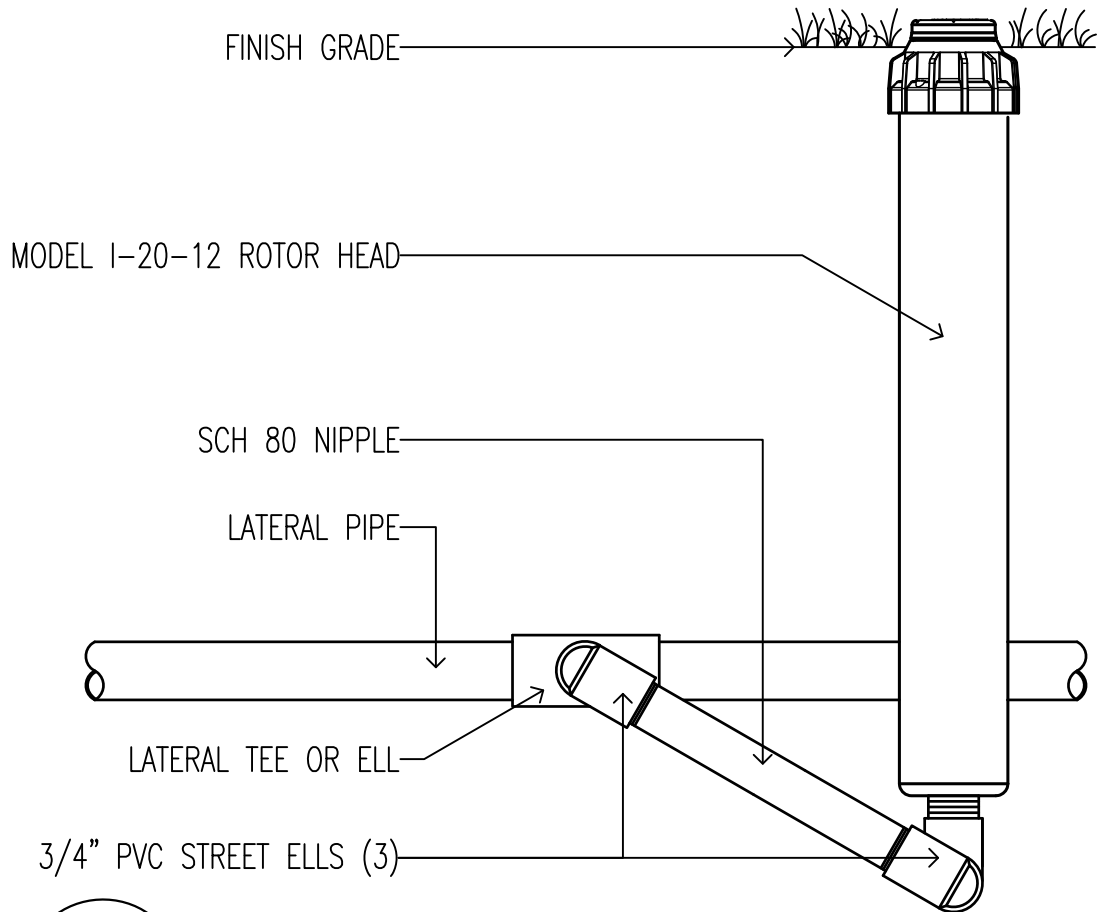


XX I-20-12 ROTOR HEAD
SCALE: 3" = 1'-0" Hunter IRRIGATION DETAIL

OPTIONS:

☐ R = FACTORY INSTALLED RECLAIMED RUBBER COVER

*When using larger GPM nozzles, beware of high friction loss in swing joints.



I-20-12 ROTOR HEAD

SCALE: 3" = 1'-0"

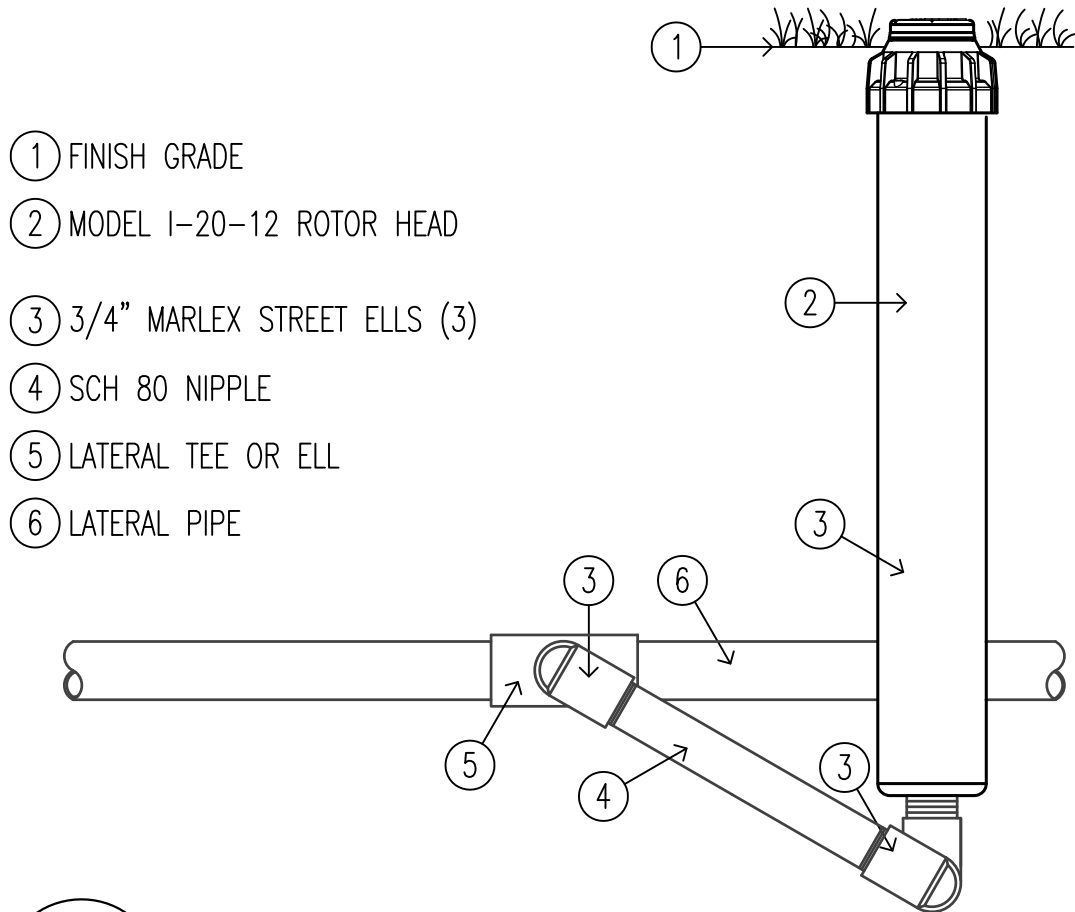


IRRIGATION DETAIL

OPTIONS:

☐ R = FACTORY INSTALLED RECLAIMED RUBBER COVER

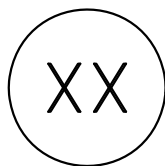
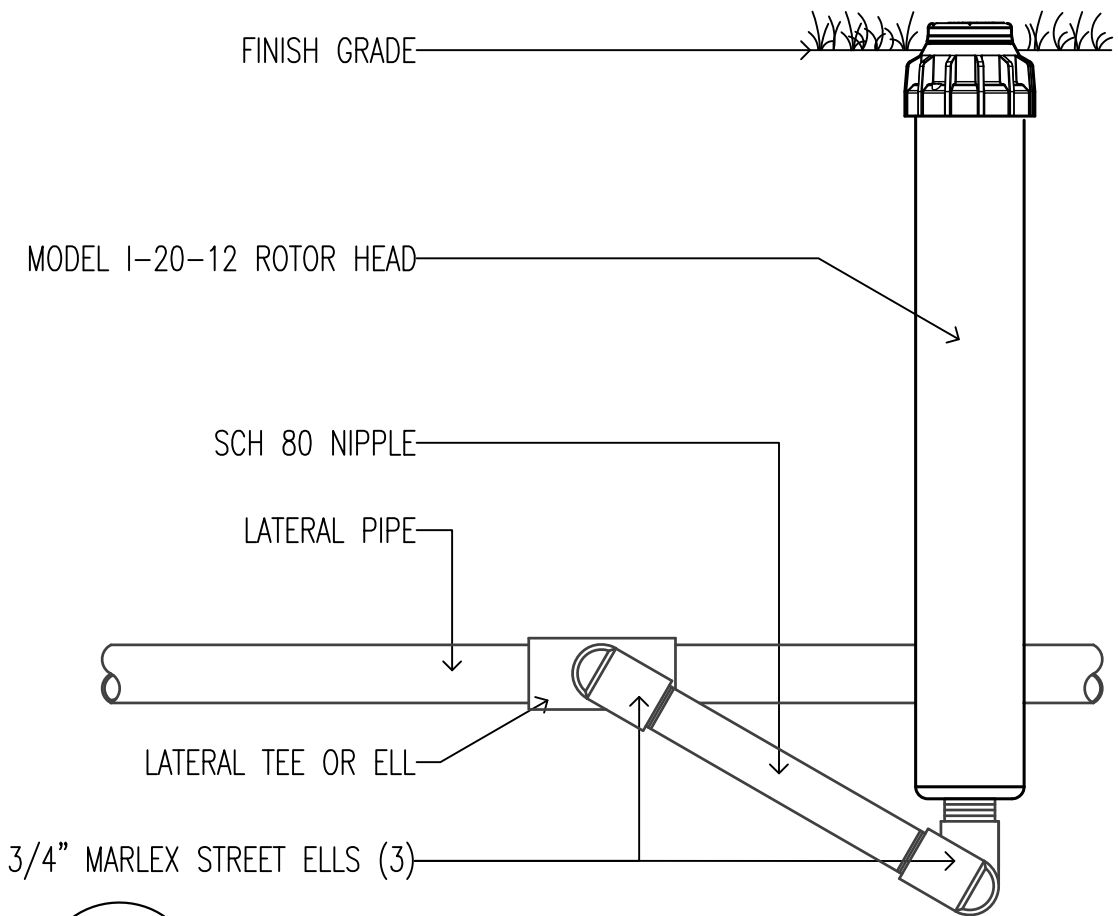
*When using larger GPM nozzles, beware of high friction loss in swing joints.



XX I-20-12 ROTOR HEAD
 SCALE: 3" = 1'-0" Hunter IRRIGATION DETAIL

OPTIONS:
☐ R = FACTORY INSTALLED RECLAIMED RUBBER COVER

*When using larger GPM nozzles, beware of high friction loss in swing joints.

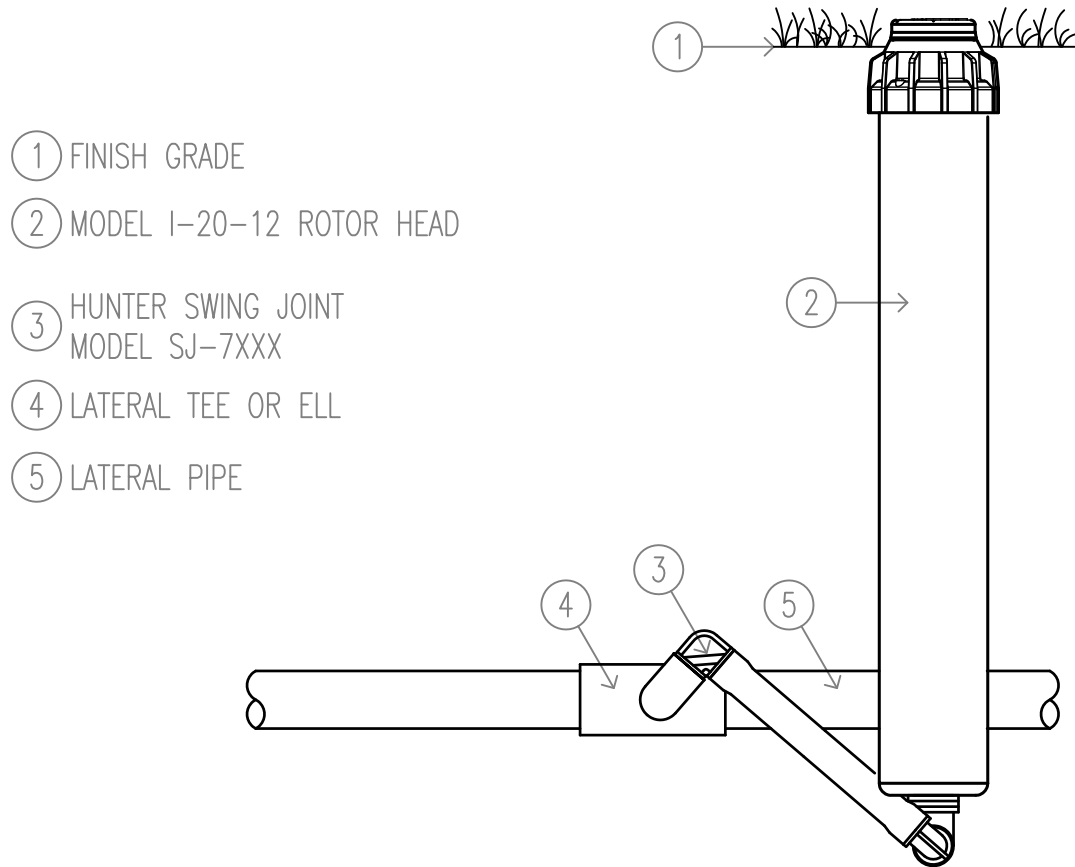


I-20-12 ROTOR HEAD

SCALE: 3" = 1'-0" Hunter IRRIGATION DETAIL

OPTIONS:
☐ R = FACTORY INSTALLED RECLAIMED RUBBER COVER

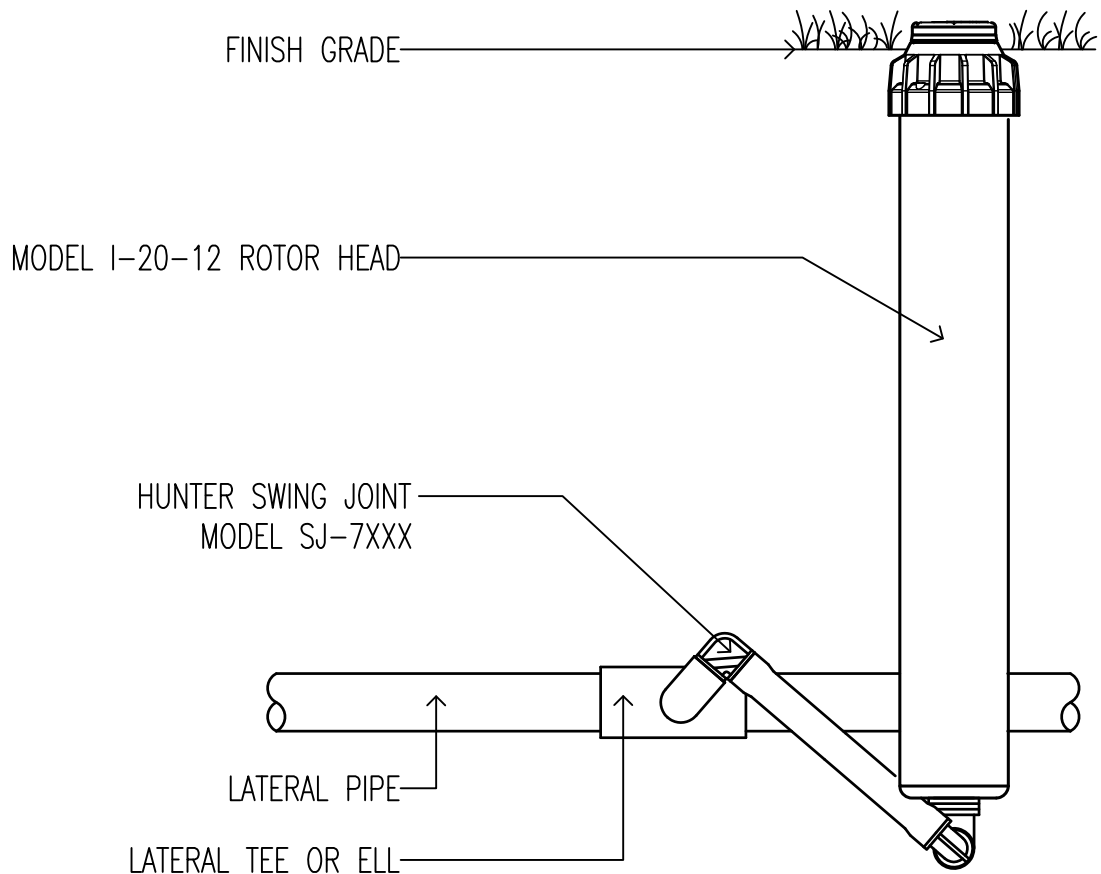
*When using larger GPM nozzles, beware of high friction loss in swing joints.



XX I-20-12 ROTOR HEAD
SCALE: 3" = 1'-0" Hunter IRRIGATION DETAIL

OPTIONS:
☐ R = FACTORY INSTALLED RECLAIMED RUBBER COVER

*When using larger GPM nozzles, beware of high friction loss in swing joints.



XX I-20-12 ROTOR HEAD
SCALE: 3" = 1'-0" Hunter IRRIGATION DETAIL

OPTIONS:
☐ R = FACTORY INSTALLED RECLAIMED RUBBER COVER

*When using larger GPM nozzles, beware of high friction loss in swing joints.

① FINISH GRADE

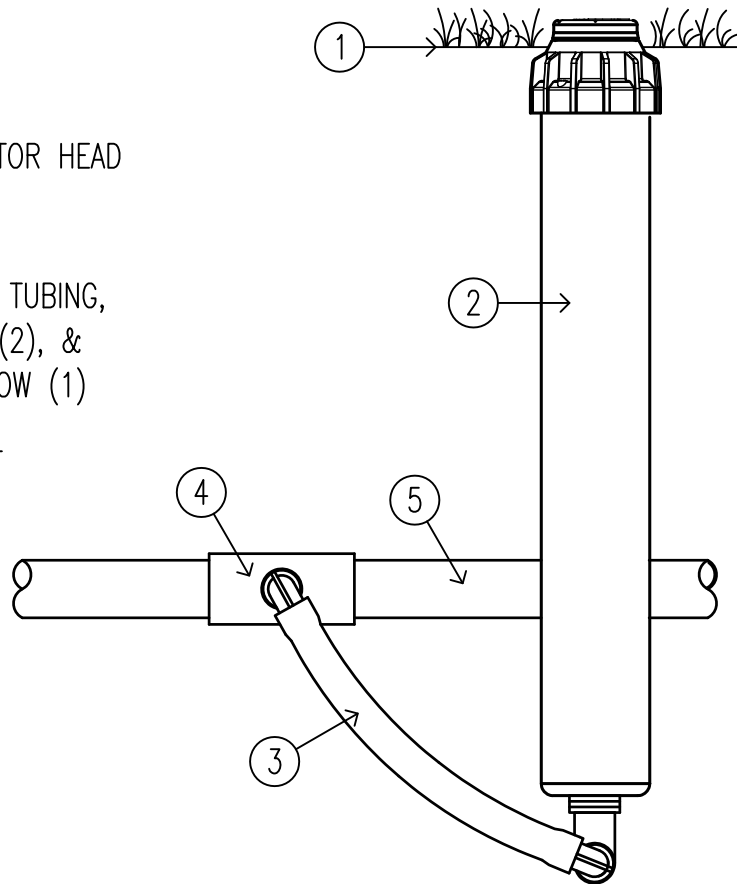
② MODEL I-20-12 ROTOR HEAD

SWING JOINT:

③ HUNTER 'PRO-FLEX' TUBING,
HSBE-075 ELBOWS (2), &
MARLEX STREET ELBOW (1)

④ LATERAL TEE OR ELL

⑤ LATERAL PIPE

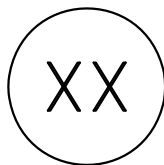
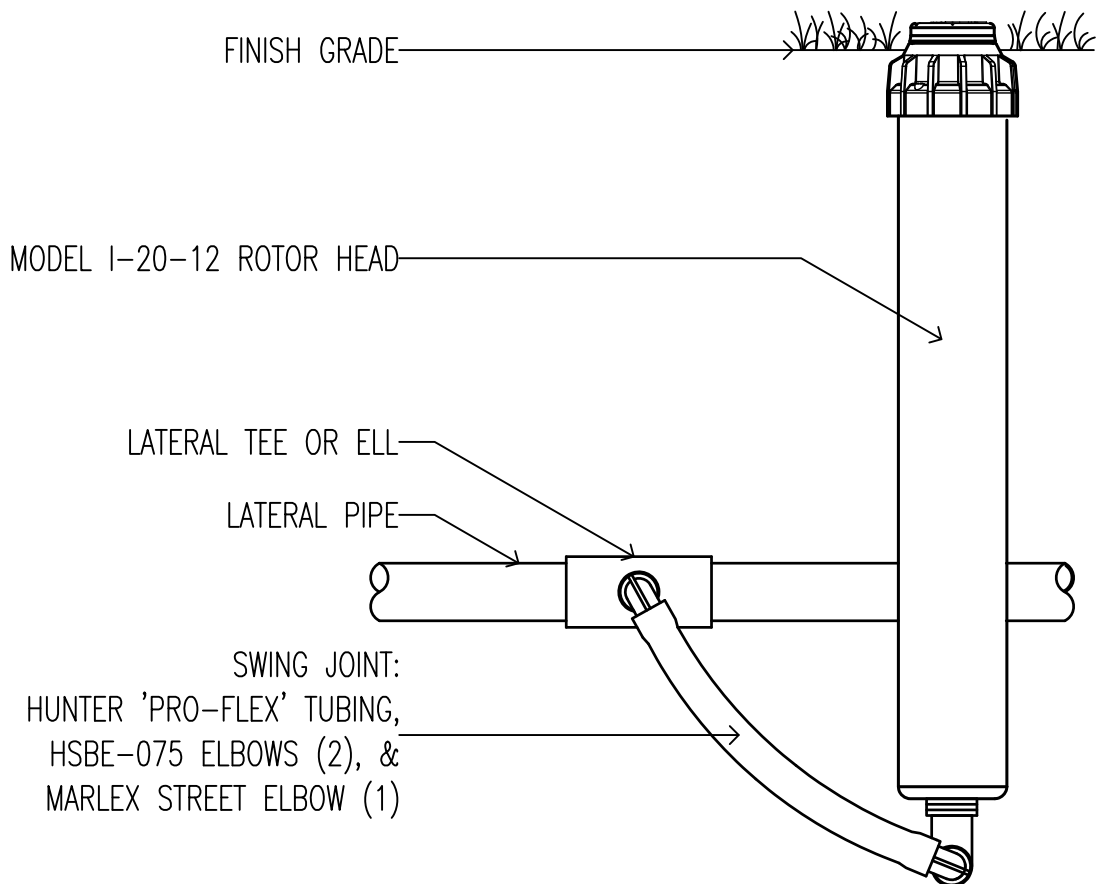


XX I-20-12 ROTOR HEAD
SCALE: 3" = 1'-0" Hunter IRRIGATION DETAIL

OPTIONS:

☐ R = FACTORY INSTALLED RECLAIMED RUBBER COVER

*When using larger GPM nozzles, beware of high friction loss in swing joints.



I-20-12 ROTOR HEAD

SCALE: 3" = 1'-0"



IRRIGATION DETAIL

OPTIONS:

☐ R = FACTORY INSTALLED RECLAIMED RUBBER COVER