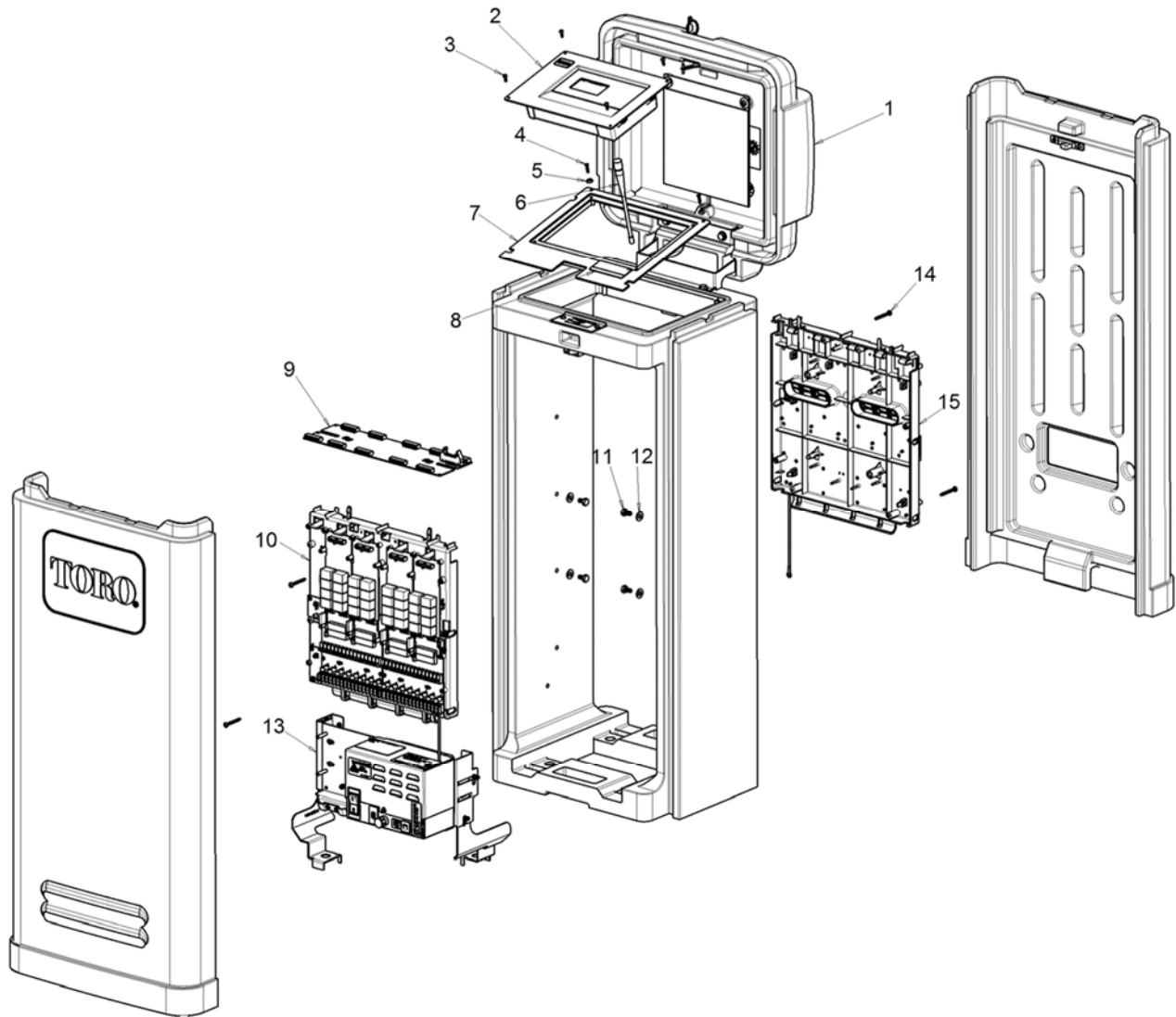


## OSMAC G3 - Satellite



#	Description
1	118-0830 Plastic Pedestal, Short, Desert Sand, Assembly
1	118-0829 Plastic Pedestal, Short, Tree Bark, Assembly
1	118-0828 Plastic Pedestal, Short, Green, Assembly

#	Description
2	118-2986 Timing Mechanism, OSMAC G3
3	363-6504 Tap Screw, Timing Mechanism
4	363-6520 Tap Screw, Countersunk, TM Faceplate
5	363-8394 Washer, Faceplate
6	363-7402 BNC Antenna, 6"
7	89-8542 TM Mounting Faceplate
8	91-0910 Decal, Caution, Removable Door
9	102-0318 Output Distribution Board Assy.
10	89-9932 Frontplate Assy. w/ Pump, 32 Sta w/ Surge
10	102-0374 Frontplate Assy. w/ Pump, 32 Sta w/ SWT/BLKS
10	102-0167 Frontplate Assy. w/ Pump, 24 Sta w/ Surge
10	102-0372 Frontplate Assy. w/ Pump, 24 Sta w/ SWT/BLKS
10	102-0166 Frontplate Assy. w/ Pump, 16 Sta w/ Surge
10	102-0370 Frontplate Assy. w/ Pump, 16 Sta w/ SWT/BLKS
11	363-8634 SCREW-CAP, HH
12	360-0140 WASHER-FLAT

#	Description
13	118-6366 Power Supply Assembly (For individual components, see OSMAC G3 Power Supply section.)
14	3-2696 Screw-Tap, #8
15	102-8929 Backplate Assy. w/o Pump, 32 Sta w/ Surge
15	102-8958 Backplate Assy. w/o Pump, 32 Sta w/ SWT/BLKS
15	102-0169 Backplate Assy. w/o Pump, 24 Sta w/ Surge
15	102-0380 Backplate Assy. w/o Pump, 24 Sta w/ SWT/BLKS
15	102-0168 Backplate Assy. w/o Pump, 16 Sta w/ Surge
15	102-0378 Backplate Assy. w/o Pump, 16 Sta w/ SWT/BLKS
15	89-9964 Backplate Assy. w/o Pump, 8 Sta w/ Surge
15	102-0376 Backplate Assy. w/o Pump, 8 Sta w/ SWT/BLKS
15	89-9931 Mounting Front/Backplate, Plastic