

Golf Sprinkler Body - 1 Inch - 800S and DT Series

Ref.	Part Number	Qty.	Description
1	102-1090	1	Electric W/O Vih, Npt (Includes Items 1-2) ▲
1	102-1084	1	Hydraulic No W/O Vih, Npt (Includes Items 1-2) ▲
1	102-1078	1	Com W/O Vih, Npt (Includes Items 1-3 & 5) ▲
1	118-1137	1	Body Assy., 1" Npt (For Decoder Equipped Models) ▲
1	102-1092	1	Electric W/O Vih, Bsp (Includes Items 1-2) ◆
1	102-1086	1	Hydraulic No W/O Vih, Bsp (Includes Items 1-2) ◆
1	102-1080	1	Com W/O Vih, Bsp (Includes Items 1-3 & 5) ◆

Ref.	Part Number	Qty.	Description
1	118-1138	1	Body Assy., 1" Bsp (For Decoder Equipped Models) ◆
1	102-1094	1	1" Acme Body Style, Electric W/O Vih (Includes Items 1-2) □
1	102-1088	1	1" Acme Body Style, Hydraulic No W/O Vih (Includes Items 1-2) □
1	102-1082	1	1" Acme Body Style, Com W/O Vih (Includes Items 1-3 & 5) □
1	118-1139	1	Body Assy., 1" Acme (For Decoder Equipped Models) □

● SERVICE ITEMS

▲ 1 Inch NPT Body Style

□ 1 Inch ACME Body Style

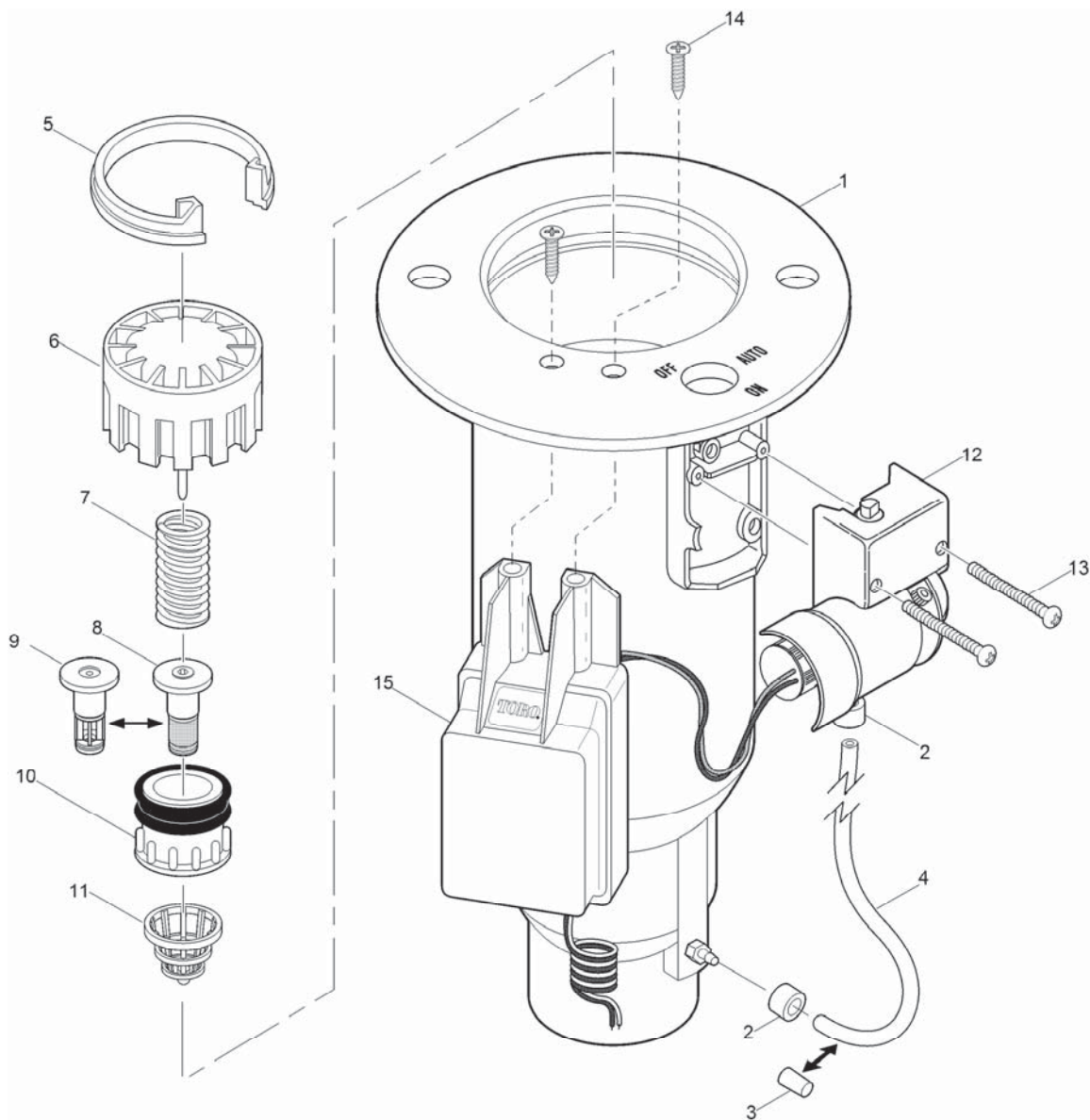
▶ See Pilot Valve Assembly Section.

✚ Order Through Finished Goods Distribution System - Minneapolis

■ Not illustrated

◆ 1 Inch BSP Body Style

○ Not serviced separately



Golf Sprinkler Body - 1 Inch - 800S and DT Series (continued)

Ref.	Part Number	Qty.	Description
2	900-40	2	Retainer, Tube, Pr And Cr +
3	89-8157	1	Cap, 1/4
4	9-2623	1	Tube, 1/4
4	9-1876	1	Tube, 1/4
5	89-4702	1	Snap Ring, Valve
6	102-0623	1	Cylinder Assy., EI & No/Com
7	3-2633	1	Spring, Valve, No, EI & Nc
7	89-5821	1	Spring, Valve, Com
8	35-9646	1	Filter Assy., Metering, EI, Nc
9	102-6529	1	Filter Assy., Non-Metering, No/Com
10	102-6314	1	Piston Assy., No & Com
10	89-1054	1	Piston Assy., EI & Nc,

Ref.	Part Number	Qty.	Description
11	102-0784	1	Rock Screen, 1
12		1	Pilot Valve Assy. (See Pilot Valve Assembly Section) ○ ▶
13	3-2696	2	Screw-Tap, #8
14	363-6396	2	Screw (For Decoder Equipped Models)
15	DEC-ISP-1GB	1	Gdc Module W/O Solenoid, 1-Station, Golf Body
15	118-0841	1	Gdc Module W/ Solenoid, 1-Station, Golf Body
	102-6313	1	Valve Assy., No ● ■
	102-6312	1	Valve Assy., Com ● ■
	102-0624	1	Valve Assy., EI, Nc ● ■

● SERVICE ITEMS

▲ 1 Inch NPT Body Style

□ 1 Inch ACME Body Style

▶ See Pilot Valve Assembly Section.

+ Order Through Finished Goods Distribution System - Minneapolis

■ Not illustrated

◆ 1 Inch BSP Body Style

○ Not serviced separately