



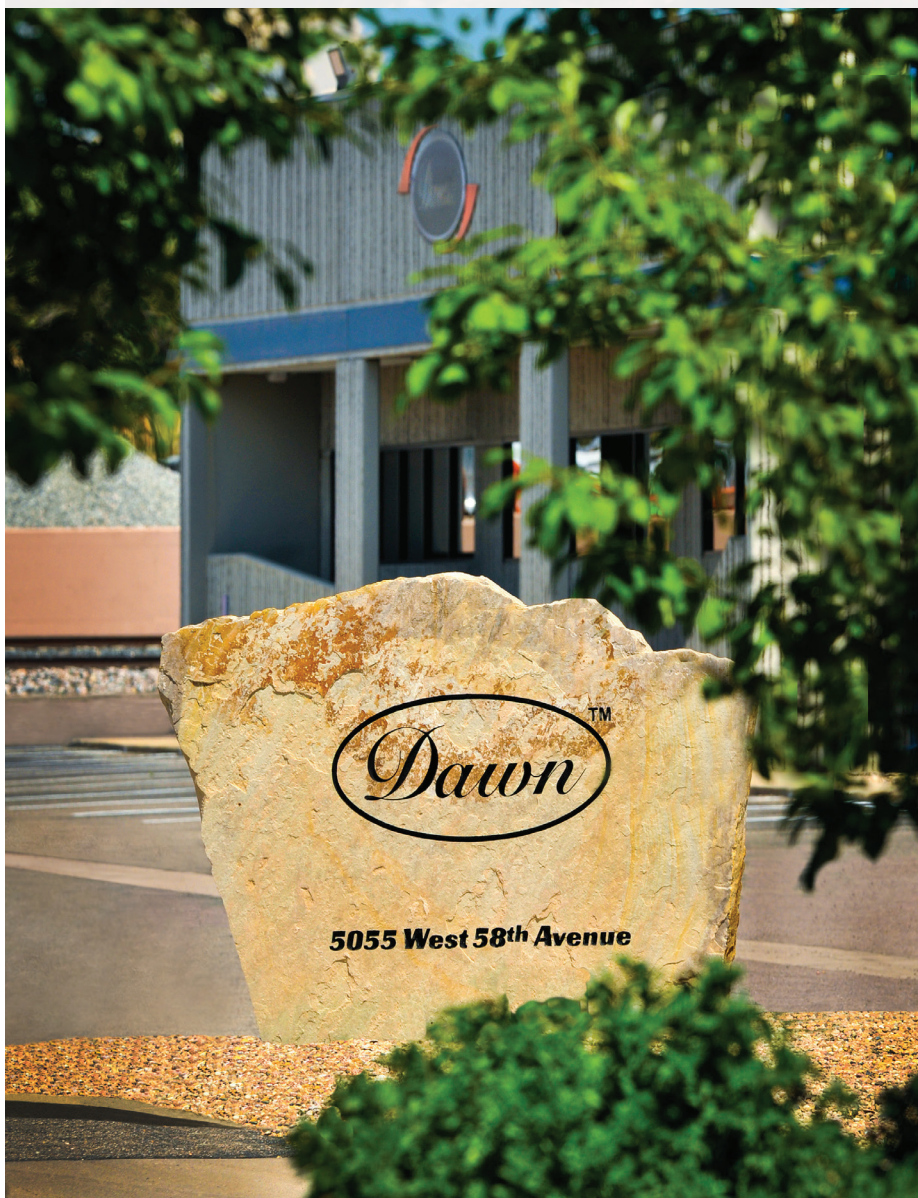
**PRODUCT  
CATALOG**

**VOLUME 22**

August 2021







## About Dawn Industries

Saving water system professionals time and money is our mission. Over the past 30 years, Dawn Industries, Inc. has introduced some of the most innovative and successful water system and replacement products on the market. The Company's team of seasoned engineers, sales and office staff continue to work closely with professionals from multiple industries in developing new and innovative products.

What separates Dawn Industries is our commitment to pleasing our customer base. We're a business that treats our customers like family, with respect, courtesy and warmth. We recognize that you are our lifeblood, everything we do is focused on your satisfaction.

We appreciate your business and look forward to serving you for many years to come.



## Spring Action and Original KwikCut™

These multi-purpose cutters are designed to make quick work of Polyethylene pipe, thin wall PVC, hose, tubing and most other non-metal items. Our blades are manufactured in our Colorado facility using a proprietary blade making system from the longest lasting, highest quality metal. This ensures exceptional quality control throughout the production process and creates a blade that is sharper and holds its edge longer for more clean, precise cuts. Together with the tough fiberglass reinforced nylon handles KwikCut is the highest quality cutter on the market at any price.

100 and 135 series models are available with orange or black handles as well as stainless steel or PTFE coated blades. SS200 and SL200 are only available with black handles and stainless blades.

Part Number <b>TXXX-X-XX</b>			Made in USA
KwikCut Model	Blade Size	Handle Color	Blade Type
T	XXX	X	XX
T   Standard	100   Cuts 1 ¼" OD 135   Cuts 1 ⅝" OD	O   Orange Blank   Black	Blank   PTFE Coated SS   Stainless Steel

Example: T100 (Black KwikCut with a PTFE Coated Blade)

Example: T100-0-SS (Orange KwikCut with a Stainless Steel Blade)

Part Number <b>SLXXX-X-XX</b>			Made in USA
KwikCut Model	Blade Size	Handle Color	Blade Type
SL	SLXXX-X-XX	X	XX
SL   Spring Action	100   Cuts 1 ¼" OD 135   Cuts 1 ⅝" OD	O   Orange Blank   Black	Blank   PTFE Coated SS   Stainless Steel

Example: SL100-O (Orange Spring Action KwikCut with a PTFE Coated Blade)

Part Number <b>XX 200</b>			Made in USA
KwikCut Model	Blade Size	Handle Color	Blade Type
XX	200		
SS   Standard SL   Spring Action	200   Cuts 1 7/8" OD	Black	Stainless Steel

Example: SL200 (Black Spring Action KwikCut with a Stainless Steel Blade)



**T Series**

Patent #4336652



**SL Series**

Patent #6370780





Patent # 7150289

A Superior Tool-Less Saddle Tee for Polyethylene Pipe. The Most Secure Fittings on the Market.

### Pre-Installed Swing/Drip Connections

- No tools, snaps or straps required
- Significantly less flow restriction than inserts
- Installs 6 x faster than inserts with worm screw clamps
- Superior versatility (remove, move, replace)

### Independent Lab Test Results

Flow Rate	Flow Restriction	Quick Burst Test
13.6 gpm @ 40psi	41% less than standard insert tee	392 psi @ 62 seconds - The KwikTap fitting did not fail

Part Number <b>KTXXXXXXX</b>		Made in USA
KwikTap Model	Size	Outlet
KT	XXX	XXXXX
KT   KwikTap	007   3/4"	C   1/2" FPT
	010   1"	D   3/4" FPT
	012   1 1/4"	SWE   Swing Elbow Adapter
	025   25mm	SWS   Swing Straight Adapter
	032   32mm	DMA17   17mm Drip Adapter

Example: KT010SWE (1" KwikTap with a Swing Elbow Adapter)

**Sold in Quantities:** 10 Per Bag - 200 Units Per Box

Part Number <b>KT015XXX</b>		Made in USA
KwikTap Model	Size	Outlet
KT	015	X
KT   KwikTap	015   1 1/2"	C   1/2" FPT
		D   3/4" FPT
		SWE   Swing Elbow Adapter
		SWS   Swing Straight Adapter

Example: KT015D (1 1/2" KwikTap with 3/4" FPT)

**Sold in Quantities:** 10 Per Bag - 200 Units Per Box

**KT015SW-E & KT015SW-S Sold in Quantities:** 10 Per Bag - 100 Units Per Box



### KwikSeal Saddles

A superior saddle tee for Polyethylene that eliminates the hassles and problems associated with insert fittings.

- No rubber gaskets
- Lower profile saddle tee
- T-Bolt and Nut made of fiberglass reinforced nylon
- No clamps to rust or corrode
- Molded barb seal

### Zero Flow Restriction

Withstands Over 400 PSI Without Leaking  
2 1/2" length protects seal area if pipe is kinked or damaged near saddle tee.

Part Number <b>XXXX</b>		Made in USA
KwikSeal Model/Size	Outlet	
XXX	X	
75   3/4" Poly Saddle	C   1/2" FPT	
100   1" Poly Saddle	D   3/4" FPT	
125   1 1/4" Poly Saddle		

Example: 100C (1" KwikSeal with a 1/2" Outlet)

**Sold in Quantities:** 10 Per Bag - 250 Units Per Box



### Coring Tool

Part Number: **HCT-COMBO** Made in USA



Patent # 478189

### Nut Driver

Part Number: **ND375** Made in USA



## No Clamps, No Tools, No Hassles

In repeated high pressure testing (up to 400 psi) the KwikConnect never leaked or failed. In every test, the pipe burst without one KwikConnect failure. KwikConnects are designed for use wherever standard, ASTM D 2609, insert fittings are used.\*

*\* Designed for use on 80, 100 and 160 psi pipe which meets ASTM D 2239 pressure rated polyethylene pipe standard as well as Ag drip pipe.*

KwikConnect Features Include:

- Installs in seconds
- No clamps needed
- Fast, easy and secure
- Reduces labor
- Saves dollars
- Dependable and reliable

KwikConnect is made from the finest engineered resins available on the market today.



Expanding lock ring provides superior holding power by biting into the pipe and expanding to grip securely in high pressure or hammer situations.

PTFE coated Buna O-rings for ease of installation and long sealing life.

Patent #8328241

### KwikConnect™ Coupler 1"

Part Number: **KCC1429-010** **Made in USA**

Sold in Quantities: 10 Per Bag - 200 Units Per Box



### KwikConnect™ Reducing Tee

Part Number:

**Made in USA**

**KCRT1402-130** 1/2" FPT

**KCRT1402-131** 3/4" FPT

Sold in Quantities: 10 Per Bag - 200 Units Per Box



### KwikConnect™ Tee 1"

Part Number: **KCT1401-010**

**Made in USA**

Sold in Quantities: 10 Per Bag - 200 Units Per Box



### KwikConnect™ Male Adapter 1" x 1" MPT

Part Number: **KCMA1436-010**

**Made in USA**

Sold in Quantities: 10 Per Bag - 250 Units Per Box



### KwikConnect™ Reducing Elbow

Part Number:

**Made in USA**

**KCRE1407-130** 1/2" FPT

**KCRE1407-131** 3/4" FPT

Sold in Quantities: 10 Per Bag - 250 Units Per Box



### KwikConnect™ Elbow 1"

Part Number: **KCE1406-010**

**Made in USA**

Sold in Quantities: 10 Per Bag - 250 Units Per Box



### KwikConnect™ End of Line 1" x Swing

Part Number: **KCEL1429-129**

**Made in USA**

Sold in Quantities: 10 Per Bag - 250 Units Per Box



The **KwikAdapt** line of products offers fast, secure connections to Swing pipe. The barb and spike combination keeps the Swing pipe in place even under pressure surges.

- Faster to install
- Save on labor cost
- Strong and convenient
- Barb and Spike design



### Swing/Drip Coupling

Part Number: **SW1429-003** **DC1429-017**  
**Made in USA**  
 Sold in Quantities: 50 Per Bag - 1,000 Units Per Box



### Swing/Drip Tee

Part Number: **SW1401-003** **DT1401-017**  
**Made in USA**  
 Sold in Quantities: 50 Per Bag - 1,000 Units Per Box



### Swing Adapter

Part Number: **SW1436-073** (1/2") **SW1436-099** (3/4")  
**Made in USA**  
 Sold in Quantities: 50 Per Bag - 1,000 Units Per Box



### Swing Elbow

Part Number: **SW1413-073** (1/2") **SW1413-099** (3/4")  
**Made in USA**  
 Sold in Quantities: 50 Per Bag - 1,000 Units Per Box  
 Sold in Quantities: 50 Per Bag - 1,500 Units Per Box



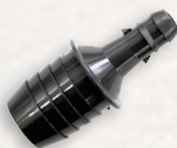
### Swing Tee x 1/2" MPT

Part Number: **SW1403-003** **DT1403-017**  
**Made in USA**  
 Sold in Quantities: 50 Per Bag - 1,000 Units Per Box



### Drip Adapter

Part Number: **DMA17-050** (1/2" MPT x 17 mm)  
**Made in USA**  
 Sold in Quantities: 50 per Bag - 1,000 Units per Box



### End of Line

Part Number: **SW1429-099** (3/4") **SW1429-129** (1")  
**Made in USA**  
 Sold in Quantities: 50 Per Bag - 1,500 Units Per Box  
 Sold in Quantities: 25 per Bag - 1,000 Units per Box



### Swing/Drip Insert Tee

Part Number: **SW1401-099** (3/4") **SW1401-129** (1") **DT1401-099-017** (3/4") **DT1401-129-017** (1")  
**Made in USA**  
 Sold in Quantities: 10 per Bag - 250 Units per Box



### 17mm Coupler to Swing

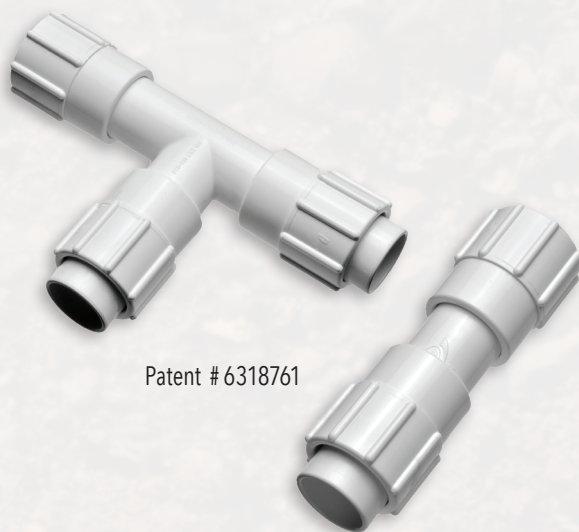
Part Number: **DC1429-017-003**  
**Made in USA**  
 Sold in Quantities: 50 per Bag - 1,000 Units per Box



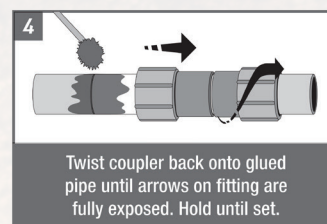
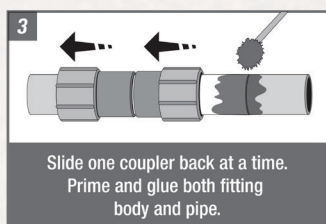
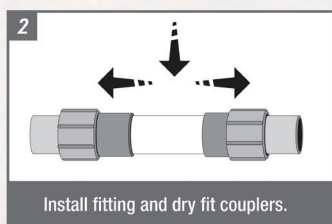
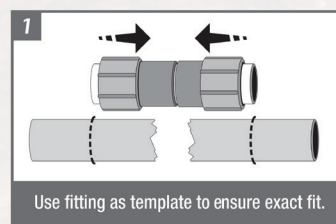
**KwikRepair™** makes in-line installation or repair of PVC lines faster, easier, stronger and more cost efficient with just 1 fitting. The KwikRepair sleeves slide onto the pipe, once primer and solvent is applied to the end of the fitting and end of the pipe being repaired, eliminating bending or flexing of the pipe.

- Do the job with just one fitting
- Permanent solvent weld seal
- Effective for limited space applications
- No Thrust Blocking or Staking needed

**Made in USA**



Patent # 6318761



Part Number: <b>KRXXXX-XXX</b> <span style="float: right;">Made in USA</span>	
KwikRepair Model	Outlet
KRXXXX	
KRT 401   Repair Tee	005   1/2"
KRC 429   Repair Coupler	007   3/4"
	010   1"
	012   1 1/4"
	015   1 1/2"
	020   2"
	025   2 1/2" (Not Available in Tee)
	030   3" (Not Available in Tee)
	040   4" (Not Available in Tee)

KwikRepair Working Pressure Ratings @ 73° F	
Diameter	Pressure
1/2"	450psi
3/4"	360psi
1"	338psi
1 1/4"	278psi
1 1/2"	248psi
2"	210psi
2 1/2"	225psi
3"	195psi
4"	165psi

Example: KRC429-010 (1" KwikRepair Coupler)

**Tees 1/2" - 1" Sold in Quantities: 10 Per Box**

**Tees 1 1/4" - 2" Sold in Quantities: 5 Per Box**

**Couplers 1/2" - 1 1/2" Sold in Quantities: 10 Per Box**

**Couplers 2" - 4" Sold in Quantities: 5 Per Box**



## KwikSlip PVC Glue Fittings

**KwikSlip™** is a one-piece glue fitting for PVC to Swing or Drip pipe

- Faster to install
- No threads to leak
- Save on labor cost

## KwikSlip "Y" Tee x Swing



## KwikSlip Tee x Swing



## KwikSlip Spigot x Hub x Swing



## KwikSlip Tee x 17mm Drip



## KwikSlip Spigot x Hub x 17mm Drip



Part Number: <b>SCXXXXXX</b> <span>Made in USA</span>	
KwikSlip Model	Size   Outlet
SCXX	XXX
SC   Spigot x Hub	101   3/4" x 1/2" Spigot x Hub
SCD17   Spigot x Hub to 17mm Drip Outlet	(Not Available with Drip Outlet)
	131   1" x 3/4" Spigot x Hub
	168   1 1/4" x 1" Spigot x Hub

Example: SC131 (1" Spigot X 3/4" Hub to Swing)

**Sold in Quantities:** 10 per Bag – 250 Units per Box

**SC101 Sold in Quantities:** 25 per Bag – 250 Units per Box

Part Number: <b>SXXXXXX</b> <span>Made in USA</span>	
KwikSlip Model	Size   Outlet
SXXX	XXX
ST   Spigot x Hub	005   1/2" Tee (Not Available with Drip Outlet)
STD17   Spigot x Hub to 17mm Drip Outlet	
SY   Y x Swing Outlet	007   3/4" Tee
	010   1" Tee

Example: SY010 (Y Tee to Swing)

**Sold in Quantities:** 10 per Bag – 250 Units per Box

**ST005 Sold in Quantities:** 25 per Bag – 250 Units per Box



Patent # 7150289

A Superior Tool-Less Saddle Tee for PVC Pipe. The Most Secure Fittings on the Market.

## Pre-Installed Swing/Drip Connections

- No tools, snaps or straps required
- Swing or Drip fittings Pre-Installed
- Superior versatility (remove, move, replace)

Part Number <b>KTXXXXXXX</b> <span>Made in USA</span>	
KwikTap Model	Size   Outlet
KTPVC	XXX
KTPVC   KwikTap	007   3/4"
	010   1"
	C   1/2" FPT
	D   3/4" FPT
	SWE   Swing Elbow Adapter
	SWS   Swing Straight Adapter
	DMA17   17mm Drip Adapter

Example: KTPVC010SWE (1" KwikTap PVC with a Swing Elbow Adapter)

**Sold in Quantities:** 10 Per Bag – 200 Units Per Box



## KwikSnap PVC Glue Saddles

**KwikSnap™** is a glue-on PVC "Y" Saddle for use with 3/4" and 1" PVC to Swing.

- Do the job with just one fitting
- Fitting outlet molded at 30° angle to prevent kinking of the Swing pipe

Part Number: <b>KSYXXXX</b> <span>Made in USA</span>	
KwikSnap Model	Size   Outlet
KSY	XXX
KSY   KwikSnap Saddle	007   3/4" Y x Swing Snap Saddle
	010   1" Y x Swing Snap Saddle

Example: KSY007 (3/4" KwikSnap saddle)

**Sold in Quantities:** 25 per Bag – 250 Units per Box





### Utility Knife - Folding

- Durable construction
- Accepts most standard blades
- Convenient pocket clip
- Retractable blade securely folds into handle

Part Number: **UK200**



### Snap Off Utility Knife

- Great for light-duty cutting and trimming
- Always have a fresh sharp blade
- Eight snap-off segments per blade

Part Number: **SO123**



### Turf Knife "The Claw"

- Cutlery grade steel blade
- Comfortable non-slip grip
- Fixed hook serrated blade knife for quick clean cutting of sod or turf grass, roofing material, and floor coverings

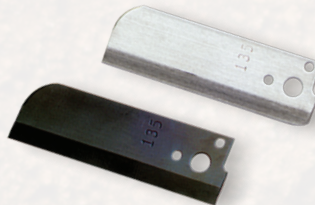
Part Number: **TK300**

## Replacement Blades



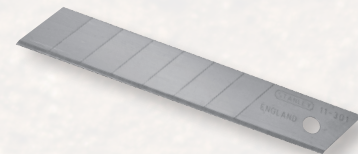
### Hand Saw

Part Number: **BGS09F, BGS13F, BGS18F** **Made in USA**



### KwikCut (Original and Advanced)

Part Number: **BT100, BT135** **Made in USA**  
BT Blade: **BT100, BT135**  
SS Blade: **SSB200, BT100-SS, BT135-SS**



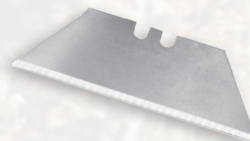
### Snap-off Utility Knife

Part Number: **BS0123** **Made in USA**  
Sold in Quantities: 10 Per Pack



### Hack Saw

Part Number: **HSB18, HSB24, HSB32** **Made in USA**  
Sold in Quantities: 10 Per Pack



### Utility Knife

Part Number: **BUK100** **Made in USA**  
Sold in Quantities: 5 Per Pack



## Self Adjusting Wire Stripper and Crimper

- Innovative Self Adjusting Mechanism is Ideal for stripping wires from 10-24 AWG
- Self Adjusts to size and removes outer jacket
- Crimps 10-22 AWG Insulated
- Crimps 4-22 AWG non-Insulated

Part Number: **WS1024SA**

## Ergonomic Wire Stripper/Cutter

Same features as WS1022 plus:

- Double dipped handles with air cushion pockets
- Strips 10-20 gauge wire
- Built-in bolt cutters cleanly cut 6-32 and 8-32 bolts
- Electrician grade

Part Number: **WS1022-ERGO**

## Wire Stripper/Cutter

- Narrow nose fits into tight places
- Spring-loaded action for self-opening
- Shear-type cutting blades for square, clean cuts
- Hardened steel with precision ground paired stripping holes for 10 to 22 gauge wire
- Wire looping and bending holes

Part Number: **WS1022**

## Hand Saw

For cutting large PVC or ABS pipe, with optimum tooth design. No other saw cuts faster or straighter than KwikCut PVC Saw. Available in 9", 13" and 18" lengths.

Part Number: **GS09F, GS13F, GS18F**

**Made in USA**

## Rope Saw

- Cuts plastic, wood, rubber and more
- Cuts in places you can't get to with a larger saw and cuts in any direction
- Ergonomic grips allow you to use your hands instead of just your fingers

Part Number: **RS32**

**Made in USA**

## Hack Saw

Dawn brings you the finest high performance hack saw you can find. High tension design helps blades last longer and is more comfortable to use than other frames. It also offers versatile blade positions and can make either standard or flush cuts. Convenient blade storage in top Frame bar.

Part Number: **HS12**

**Made in USA**

## Mini Hack Saw

- Ergonomic handle made with tough resin
- Quick change blade
- Uses standard hack saw blades

Part Number: **MH004**

**Blade made in USA**





## Crimpers

- Forged from high quality tool steel for heavy usage
- Perfect for installing or removing pinch clamps
- Handy for cutting wire strapping and pulling nails
- Lengths 8", 12"

Part Number: **CT108, CT112**



## Groove Joint Pliers

- Jaws have zinc phosphate finish for rust protection
- Lengths 10", 12", 16"
- Parallel jaws grip in all positions

Part Number: **GJP100, GJP120, GJP160**



## Dead Blow Hammer

- Tough, non-marring striking face
- Weighs 1.5 pounds, 3 pounds, 5 pounds
- No bounce

Part Number: **DBH15, DBH30, DBH50**



## Nipple Extractor

- Quickly removes both 3/4" and 1/2" PVC or Polyethylene risers and nipples
- Extra sharp, long lasting gripping blades

Part Number: **NE005**

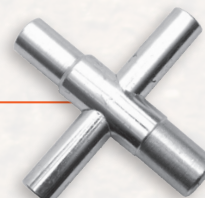


## Four Way Key

- Fits stopcocks, sillcocks and valves
- Heat-treated steel

Sizes: 1/4", 9/32", 5/16", 11/32" internal square

Part Number: **KEY04**





## KwikPull Simple innovation

Our Pipe Pullers start working in seconds. Slip the pipe into the puller and you're ready to go. It's that simple.

This patented method seals the pipe as it bends and enters the ground, eliminating the need for tape. Save on labor, fuel and machine time.

### 1" Heavy Duty Dual Pipe Puller

Part Number: **DPP01**

Made in USA

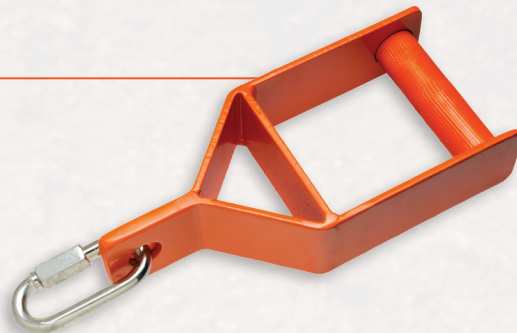
Patent # 7654774



### 1 1/4" and 1 1/2" Heavy Duty Pipe Puller

Part Number: **DPP15**

Made in USA



### 2" Heavy Duty Pipe Puller

Part Number: **DPP02**

Made in USA



### KwikLink

Part Number: **KL111**





## KwikBucket Storage Organizers

- High-impact plastic bucket with heavy duty handle
- Comes with three large sorting trays
- Comes with a very rugged and durable water resistant lid

Part Number: **B0111**

Made in USA



## KwikBucket Sorting Tray

- High-impact plastic tray that fits firmly inside a 5 Gallon Bucket
- Four compartments

Part Number: **BOT01**

Made in USA



## KwikBucket Apron

- Features 22 pockets
- Increases storage capacity
- Fits all 3.5 and 5 gallon buckets
- Secures permanently with attachment accessories

Part Number: **BA20**



## KwikTote "Industrial Strength"

- Made of High Density Polyethylene
- Resistant to Acids, Harsh Chemicals and Oils
- Lightweight, Tough and Durable
- Great truck organizers

Part Number: **PT005**

Made in USA



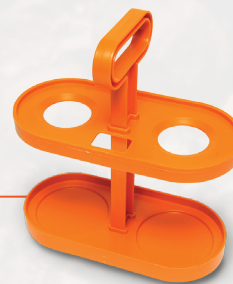


## KwikGlue Tote

- Can be used for quart/pint cans
- Carries glue and primer together (cans not included)
- Eliminates spills, waste and loose cans

Part Number: **GT200**

**Made in USA**



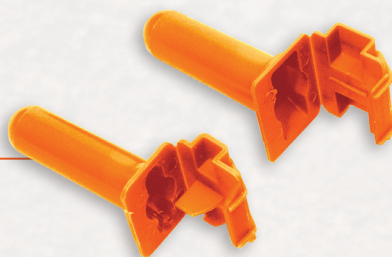
## KwikSplice Direct Bury

- Kit includes gel, tube and UL listed wire connector
- Environmentally friendly non-drying GreenPro sealant
- UV rated

Part Number:

**Made in USA**

**DBS-812-T, DBS-1412-L**



## KwikCap Lighting - Brown

Ideal moisture resistant marker and cover for landscape lighting splices

Part Number:

**Made in USA**

**ICAP-2DRY, ILID-2DRY**

**Sold in Quantities:** 25 Units per Bag



## KwikCap - Orange

Ideal marker and cover for drain valves, stop and waste valves

Part Number:

**Made in USA**

**ICAP-2, ILID-2**

**Sold in Quantities:** 25 Units per Bag





### Return Policy

---

- Customer must submit a Return Form for an RMA number to be issued. Contact us for this form.
- Goods can only be returned within 12 months of purchase.
- Dawn™ Industries will only accept saleable returns of goods, determined upon inspection.
- Returned goods will be charged a minimum 15% restocking fee.
- Customers will be responsible for any and all return shipping fees.
- Credit memo will be issued for product only.

### Freight Policy

---

Prices are F.O.B. Arvada, Colorado, freight prepaid to destination specified in the order. Dawn Industries charges a shipping and handling fee on each order, which is applied at time of order and reflected on customer's invoice.

Dawn Industries covers shipping and handling for standard ground delivery within the Continental United States and Canada on orders over \$1,500 before tax (including any backorders). Dawn Industries does not cover shipping and handling for orders shipping outside of the U.S. or Canada.

### Minimum Order Policy

---

In an effort to consolidate processing costs and increase order efficiency, Dawn strongly encourages replacing frequent small orders with larger planned purchases.

- Minimum order – \$200
- International minimum order – \$500 USD
- Order in box/bag quantities to avoid broken box/bag charges

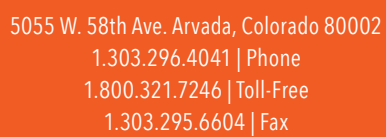
We understand that our customers may occasionally wish to place smaller orders, in such cases, a minimum \$10 special handling fee will be added. Broken box/bag orders will be charged a \$10 fee. We encourage you to support our policies so that we may continue to offer superior customer service at great prices.

### Terms

---

Net 30 days from ship date. Prices subject to change without notice.





[www.dawnindustries.com](http://www.dawnindustries.com)