

# CHAIN SAWS



**ECHO** PURCHASE  
WITH CONFIDENCE  
CS-271T/CS-303T/CS-355T/CS-361P  
**PRO-ARBORIST SAWS**



For more information on ECHO Chain Saws including specifications and bars/chain sizes and accessories, scan this QR code with your smartphone's QR code app.

800-432-3246 | [www.ECHO-USA.com](http://www.ECHO-USA.com)



## An Arborist's Dream Machine

Whether you're pruning limbs or taking down a whole tree, ECHO Chain Saws provide long, trouble-free performance. Superior quality begins with a professional-grade, 2-stroke engine and an advanced ignition system that ensures fast starts either on the ground, or in a tree or bucket. All ECHO Chain Saws are backed by a 5-year consumer warranty and a 1-year commercial warranty.

### ECHO ARBORIST CHAIN SAW FEATURES AND BENEFITS

- |  |  |
|--|--|
| <b>A</b> Dual-post chain brake for extra durability                        | <b>J</b> Integrated choke and fast idle with trigger release for easy starting |
| <b>B</b> Inertia-type chain brake for safety                               | <b>K</b> G-Force Engine Air Pre-Cleaner™ for cleaner air supply to engine      |
| <b>C</b> Tool-less air filter cover for easy access                        | <b>L</b> Automatic, adjustable oiler to match cutting conditions               |
| <b>D</b> Tall profile bar with multi-rivet nose for longer life            | <b>M</b> Automatic, adjustable clutch-driven oiler for reduced oil consumption |
| <b>E</b> Premium chain with extended-length cutters                        | <b>P</b> Replaceable, metal bumper spike for improved control                  |
| <b>F</b> Vibration-reduction system for operator comfort                   | <b>Q</b> Side access chain tensioner for quick chain adjustments               |
| <b>G</b> i-30™ starting system for reduced effort starting                 | <b>U</b> Metal lanyard ring for easy attaching and detaching                   |
| <b>H</b> Spring-assisted starting system for reduced effort starting       | <b>V</b> Optional metal bumper spike for more control                          |
| <b>I</b> Digital ignition system for easy starting and smooth acceleration | <b>X</b> Purge bulb for easy starting  |



### CS-271T

Lightweight with incredible torque and throttle response.

- 26.9 cc professional-grade, 2-stroke engine
- 12" bar length

**B C F G I J K M Q V X**



### CS-303T

Proven design with increased power.

- 30.1 cc professional-grade, 2-stroke engine
- 12" and 14" bar lengths

**B F L Q U X**



### CS-355T

Our crowning achievement.

- 35.8 cc professional-grade, 2-stroke engine
- 14" and 16" bar lengths

**A B D E F H I J K M P Q U X**



### CS-361P

Compact saw designed for arborists.

- 35.8 cc professional-grade, 2-stroke engine
- 14" and 16" bar lengths

**B C D E F I K M P Q X**



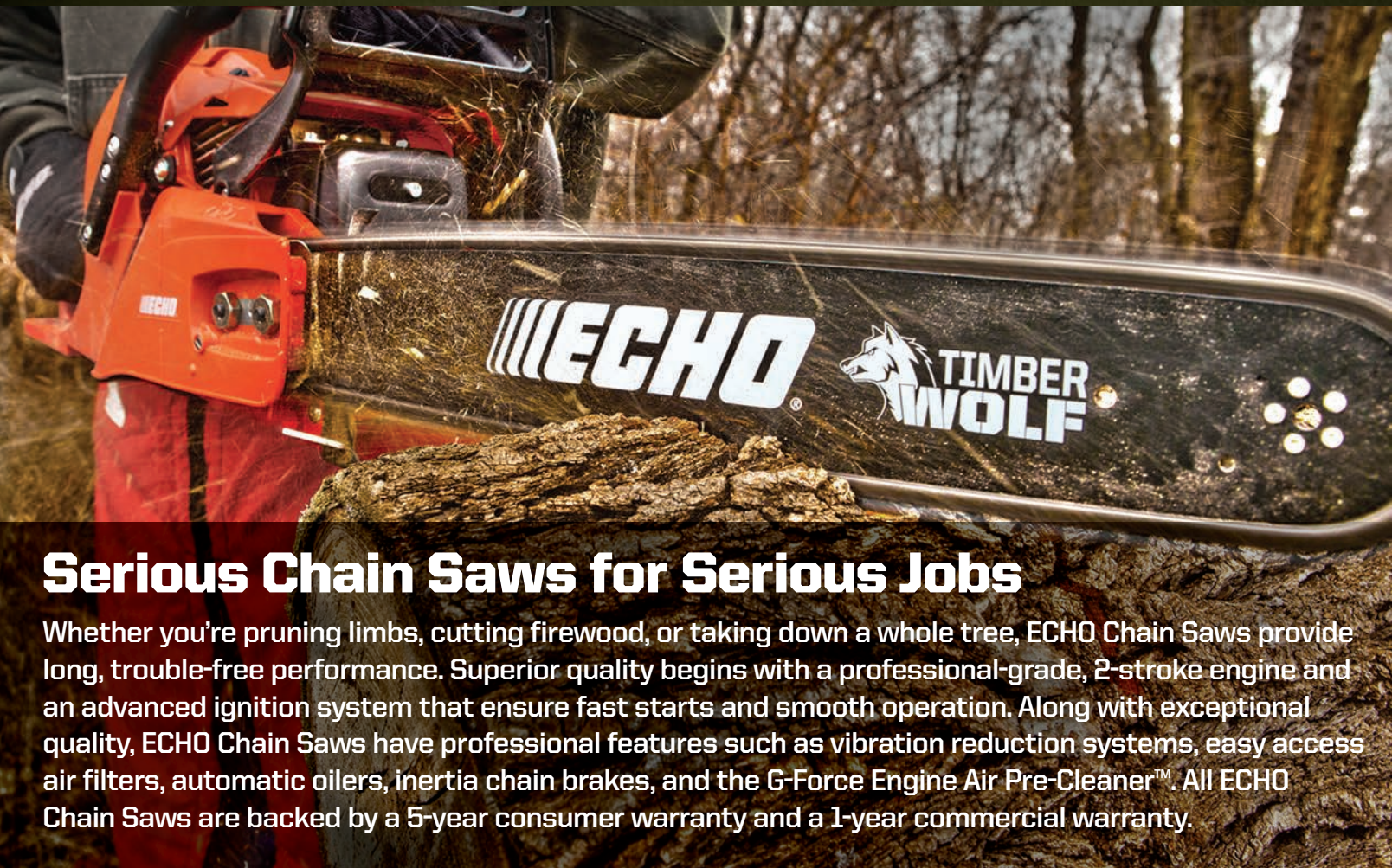
For more information on ECHO Chain Saws including specifications and bars/chain sizes and accessories, scan this QR code with your smartphone's QR code app.



ONLY PROFESSIONAL GRADE



# REAR HANDLE CHAIN SAWS



## Serious Chain Saws for Serious Jobs

Whether you're pruning limbs, cutting firewood, or taking down a whole tree, ECHO Chain Saws provide long, trouble-free performance. Superior quality begins with a professional-grade, 2-stroke engine and an advanced ignition system that ensure fast starts and smooth operation. Along with exceptional quality, ECHO Chain Saws have professional features such as vibration reduction systems, easy access air filters, automatic oilers, inertia chain brakes, and the G-Force Engine Air Pre-Cleaner™. All ECHO Chain Saws are backed by a 5-year consumer warranty and a 1-year commercial warranty.

## ECHO REAR HANDLE CHAIN SAW FEATURES AND BENEFITS

- A** Dual-post chain brake for extra durability
- B** Inertia-type chain brake for safety
- C** Tool-less air filter cover for easy access
- D** Automotive-style air filter for superior filtration
- E** Two-piece flocked air filter for easy cleaning
- F** Vibration-reduction system for operator comfort
- G** i-30™ starting system for reduced effort starting
- H** Spring-assisted starting system for reduced effort starting
- I** Digital ignition system for easy starting and smooth acceleration
- J** Integrated choke and fast idle with trigger release for easy starting
- K** G-Force Engine Air Pre-Cleaner™ for cleaner air supply to engine
- L** Automatic, adjustable oiler to match cutting conditions
- M** Automatic, adjustable clutch-driven oiler for reduced oil consumption
- N** Automatic, adjustable oiler with manual override for more oil control
- O** Performance Cutting System™ - upgraded bar and aggressive chain for improved cutting performance
- P** Replaceable, metal bumper spike for improved control
- Q** Side access chain tensioner for quick chain adjustments
- R** Decompression valve for easy starting
- S** Aluminum handle with rubber grip for improved comfort
- W** Automatic clutch-driven oiler to keep chain lubricated
- X** Purge bulb for easy starting
- Y** Wrap handle for more gripping options
- Z** Translucent fuel tank for easy level checks
- AA** FasTension™ tool-less chain tensioning system







## CS-310

**Professional features and lightweight.**

- 30.5 cc professional-grade, 2-stroke engine
- 14" and 16" bar lengths

**A B C E F G I J K Q W X**



## CS-352

**Same as CS-310 with increased power.**

- 34.0 cc professional-grade, 2-stroke engine
- 14" and 16" bar lengths

**A B C F G I J K Q W X**



## CS-370

**The best value chain saw in its class.**

- 36.3 cc professional-grade, 2-stroke engine
- 16" and 18" bar lengths

**A B C D F G I K L P Q X**



## CS-370F

**Same features as CS-370 with FasTension™.**

- 36.3 cc professional-grade, 2-stroke engine
- FasTension™ tool-less chain tensioning system
- 16" bar length

**A B C D F G I K L P X AA**



## CS-400

**Same features as CS-370 with increased power.**

- 40.2 cc professional-grade, 2-stroke engine
- 16" and 18" bar lengths

**A B C D F G I J K L P Q X**



## CS-400F

**Same features as CS-400 with FasTension™.**

- 40.2 cc professional-grade, 2-stroke engine
- FasTension™ tool-less chain tensioning system
- 18" bar length

**A B C D F G I J K L P X AA**



## CS-450P

**Outstanding power with a Performance Cutting System™.**

- 45.0 cc professional-grade, 2-stroke engine
- 16", 18", and 20" bar lengths

**A B C D F I J M O P Q S X**



## CS-490

**Lightest saw in its class.**

- 50.2 cc professional-grade, 2-stroke engine
- 16", 18", and 20" bar lengths

**A B C E F H J K M P Q**



## CS-500P

**Lightweight with professional features.**

- 50.2 cc professional-grade, 2-stroke engine
- 16", 18", and 20" bar lengths

**A B C E F H J K M O P S**



## CS-590

**The new standard for tough.**

- 59.8 cc professional-grade, 2-stroke engine
- 18", 20", and 24" bar lengths

**A B C E F I J K M P Q R Z**



## CS-600P

**Professional features and a Performance Cutting System™.**

- 59.8 cc professional-grade, 2-stroke engine
- 16", 18", 20", 24", and 27" bar lengths

**A B C E F I J K M O P Q R S Z**

# REAR HANDLE CHAIN SAWS



## CS-620P

**Increased power for professionals.**

- 59.8 cc professional-grade, 2-stroke engine
- 16", 18", 20", 24", and 27" bar lengths

**A B C E F I J K M O P Q R S Z**



## CS-620PW

**Same features as CS-620P with wrap handle.**

- 59.8 cc professional-grade, 2-stroke engine
- 16", 18", 20", 24", and 27" bar lengths

**A B C E F I J K M O P Q R S Y Z**

\* 16" bar only available in Canada



## CS-680

**Popular choice for tree felling.**

- 66.8 cc high-performance, 2-stroke engine
- 20", 24", and 27" bar lengths

**B C D F N O P Q S**



## CS-800P

**ECHO's largest chain saw.**

- 80.7 cc professional-grade, 2-stroke engine
- 24", 27", 32", and 36" bar lengths

**B C F N O P S**

## Chain Saw Specifications

Model	Engine Disp. (cc)	Engine Disp. (cu in)	Starting System	Ignition System	Purge Bulb	Oiling System	Vibration Reduction	Available Bar Length (in)	Fuel Cap. (fl. oz.)	Oil Cap. (fl. oz.)	Dry Weight* (lb)
CS-271T	26.9	1.64	i-30™	Digital	Yes	Auto/Adjustable**	Yes	12	8.1	5.4	6.6
CS-303T	30.1	1.84	Standard	Digital	Yes	Auto/Adjustable	Yes	12, 14	8.5	5.1	7.7
CS-355T	35.8	2.19	Reduced Effort	Digital	Yes	Auto/Adjustable**	Yes	14, 16	11.2	8.2	8.0
CS-310	30.5	1.86	i-30™	Digital	Yes	Automatic**	Yes	14, 16 (+)	8.5	8.8	8.8
CS-352	34.0	2.08	i-30™	Digital	Yes	Automatic**	Yes	14, 16	8.5	8.8	8.8
CS-361P	35.8	2.19	Reduced Effort	Digital	Yes	Auto/Adjustable	Yes	14, 16	10.8	7.8	8.3
CS-370	36.3	2.21	i-30™	Digital	Yes	Auto/Adjustable	Yes	16, 18	13.9	9.5	10.1
CS-370F	36.3	2.21	i-30™	Digital	Yes	Auto/Adjustable	Yes	16	13.9	9.5	10.4
CS-400	40.2	2.45	i-30™	Digital	Yes	Auto/Adjustable	Yes	16, 18	13.9	9.5	10.1
CS-400F	40.2	2.45	i-30™	Digital	Yes	Auto/Adjustable	Yes	18	13.9	9.5	10.4
CS-450P	45.0	2.75	Standard	Digital	Yes	Auto/Adjustable**	Yes	16, 18, 20	15.2	9.5	11.2
CS-490	50.2	3.06	Reduced Effort	CDI	No	Auto/Adjustable	Yes	16, 18, 20	16.6	9.5	10.6
CS-500P	50.2	3.06	Reduced Effort	CDI	No	Auto/Adjustable**	Yes	16, 18, 20	16.6	9.5	10.6
CS-590	59.8	3.65	Standard	Digital	No	Auto/Adjustable**	Yes	18, 20, 24 (+)	21.8	10.1	13.2
CS-600P	59.8	3.65	Standard	Digital	No	Auto/Adjustable**	Yes	16, 18 (+), 20, 24, 27	21.8	10.1	13.3
CS-620P/PW	59.8	3.65	Standard	Digital	No	Auto/Adjustable**	Yes	16 (+), 18, 20, 24, 27	21.8	10.1	13.7/14.1
CS-680	66.8	4.07	Standard	SAIS	No	Auto/Adjustable***	Yes	20, 24, 27	21.6	13.0	12.5
CS-800P	80.7	4.92	Standard	SAIS	No	Auto/Adjustable***	Yes	24, 27, 32, 36	28.9	14.1	16.5

(+) Bar lengths available as accessories only \* without bar and chain \*\* clutch-driven \*\*\* with manual override



For more information on ECHO Chain Saws including specifications and bars/chain sizes and accessories, scan this QR code with your smartphone's QR code app.