

High Volume Pressure Booster Pump Submittal Data

FW0542 0319
Supersedes 0518

Job or Customer	
Engineer	
Contractor	
Submitted by	Date
Approved by	Date
Specification Reference	
Quote Date	Quote Number



For continuous-duty high flow, pressure boosting applications such as increasing water pressure from city mains or private water systems. Units are not self-priming but will lift water up to 25 ft. with foot valve and pump suction piping filled

with water. Heavy-duty cast-iron body, low lead brass or thermoplastic impellers, and mechanical seal with stainless steel, Buna N and carbon-silicon carbide parts. F&W 3450 RPM motor. NEMA 56J frame with threaded shaft.

Quantity	Model Number	System Discharge Pressure (PSI)	Flow (GPM)	System Inlet Pressure (PSI)	Volts	Phase	Comments

PERFORMANCE SPECIFICATIONS

CJ101 SERIES CENTRIFUGAL PUMPS, LOW LEAD BRASS IMPELLERS

MODEL NO.		HP	STAGES	LIFT FT.	Discharge Pressure PSI										MAX. PRESS. PSI	MAX. CASE PRESS.	MAX. LIQUID TEMP.
1 PHASE	3 PHASE				10	20	30	40	50	60	70	80	90				
CAPACITY U.S. GPM																	
CJ101B071AB CJ101B071TAB	CJ101B073AB CJ101B073TAB	3/4	2	5	39	34	29	21	5					54	160psig	200° F	
				15	38	33	26	18									
				25	31	29	23	12									
CJ101B101AB CJ101B101TAB	CJ101B103AB CJ101B103TAB	1	2	5	42	38	33	26	18					62	160psig	200° F	
				15	40	36	31	24	14								
				25	32	31	28	21									
CJ101B151AB CJ101B151TAB	CJ101B153AB CJ101B153TAB	1 1/2	2	5	48	44	39	34	27	17				69	160psig	200° F	
				15	44	42	37	31	24	10							
				25	34	33	32	29	20								
CJ101B201AB CJ101B201TAB	CJ101B203AB CJ101B203TAB	2	2	5	56	52	47	41	34	24				70	160psig	200° F	
				15	50	49	45	39	31	19							
				25	37	36	35	34	27								
CJ101C201AB CJ101C201TAB	CJ101C203AB CJ101C203TAB	2	3	5	49	47	43	40	36	32	28	22	12	98	160psig	200° F	
				15	45	44	42	39	35	31	26	19					
				25	35	34	33	32	31	29	23	15					
CJ101C301AB CJ101C301TAB	CJ101C303AB CJ101C303TAB	3	3	5	56	54	51	48	44	39	33	27	18	95	160psig	200° F	
				15	50	49	48	46	42	37	31	24					
				25	37	36	36	35	34	33	29	20					



High Volume Pressure Booster Pump

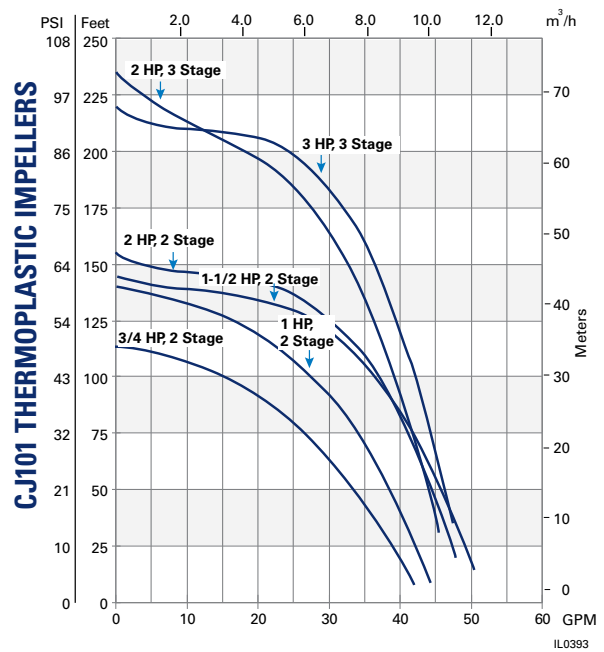
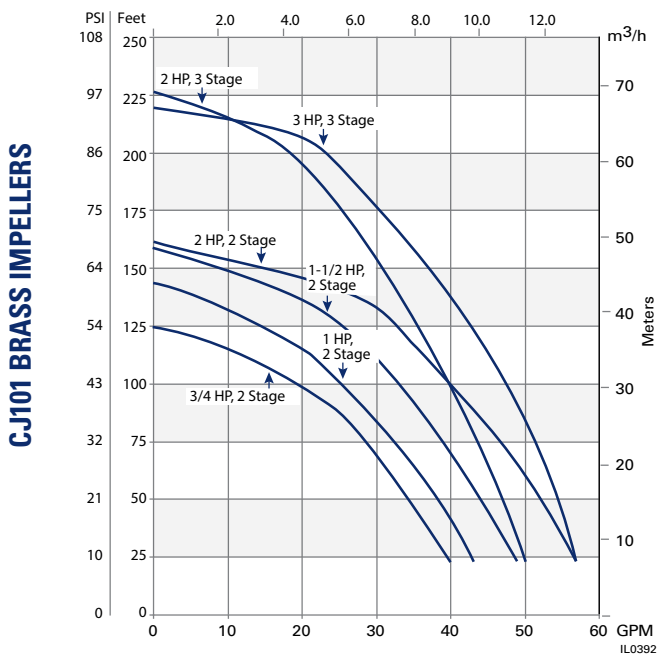
PERFORMANCE SPECIFICATIONS

CJ101 SERIES CENTRIFUGAL PUMPS, PLASTIC IMPELLERS

MODEL NO.		HP	STAGES	LIFT FT.	Discharge Pressure PSI										MAX. PRESS. PSI	MAX. CASE PRESS.	MAX. LIQUID TEMP.
1 PHASE	3 PHASE				10	20	30	40	50	60	70	80	90				
					CAPACITY U.S. GPM												
CJ101P071	CJ101P073	3/4	2	5	41	35	28	20						49	160psig	160° F	
				15	38	32	26	13									
				25	32	29	22										
CJ101P101	CJ101P103	1	2	5	45	40	35	28	20				60	160psig	160° F		
				15	42	39	33	26	15								
				25	35	33	30	22									
CJ101P151	CJ101P153	1 1/2	2	5	54	50	44	38	28				61	160psig	160° F		
				15	48	46	42	35	23								
				25	37	35	33	28	17								
CJ101P201	CJ101P203	2	2	5	55	52	47	41	34	23			67	160psig	160° F		
				15	49	47	45	39	30	17							
				25	37	36	33	32	26								
CJ101D201	CJ101D203	2	3	5	44	44	44	41	37	32	28	22	16	101	160psig	160° F	
				15	36	36	36	35	30	25	20	11					
				25	26	26	24	24	22	20	15						
CJ101D301T	CJ101D303	3	3	5	54	52	50	47	44	39	33	25	15	95	160psig	160° F	
				15	48	47	46	45	42	37	30	22	11				
				25	36	36	35	33	31	27	19						

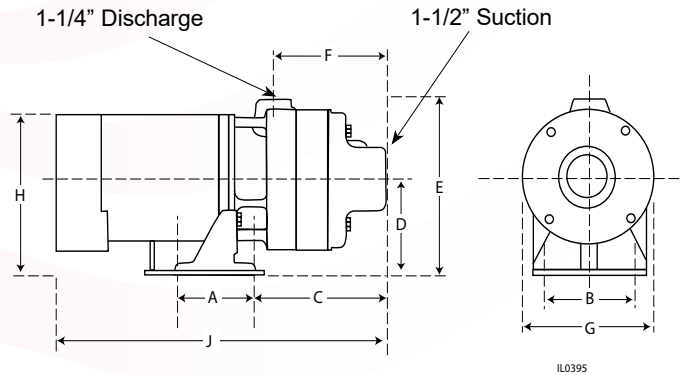
Do not exceed the maximum case pressure and maximum liquid temperature rating of the pump. Performance shown for 60Hz models. 50 Hz models also available.
Suction and Discharge Tappings 1-1/2" X 1-1/4"

PERFORMANCE CURVES



High Volume Pressure Booster Pump

PUMP DIMENSIONS 60 HZ



HP	Dimensions in Inches									Ship Wt. Lbs.
	A	B	C	D	E	F	G	H	J	
3/4	4	4-5/8	7-9/16	4-13/16	8-3/4	6-1/4	7	8-1/8	17-7/8	67
1	4	4-5/8	7-9/16	4-13/16	8-3/4	6-1/4	7	8-1/8	18-3/8	71
1-1/2	4	4-5/8	7-9/16	4-13/16	8-3/4	6-1/4	7	8-1/8	19	73
2	4	4-5/8	7-9/16	4-13/16	8-3/4	6-1/4	7	8-1/8	19-1/2	79
2 *	4	4-5/8	9-7/16	4-13/16	8-3/4	8-1/8	7	8-1/8	21-3/8	92
3 *	4	4-5/8	9-7/16	4-13/16	8-3/4	8-1/8	7	8-1/8	21-3/8	93

(*) Three Stage

PUMP DATA

Flow Range	1.5 - 51 GPM
Pressure Boost Range	.48 - 95 PSI
Liquid Temperature (Low lead brass Impellers)	34°F to 200°F
Liquid Temperature (Plastic impellers)	34°F to 160°F
Maximum Case Pressure	160 PSI



Agency Approvals	Continuous
Duty Cycle	Clear Water
Pumping Medium	Pump and Motor Field Serviceable
Service/Repair Information	

MOTOR DATA

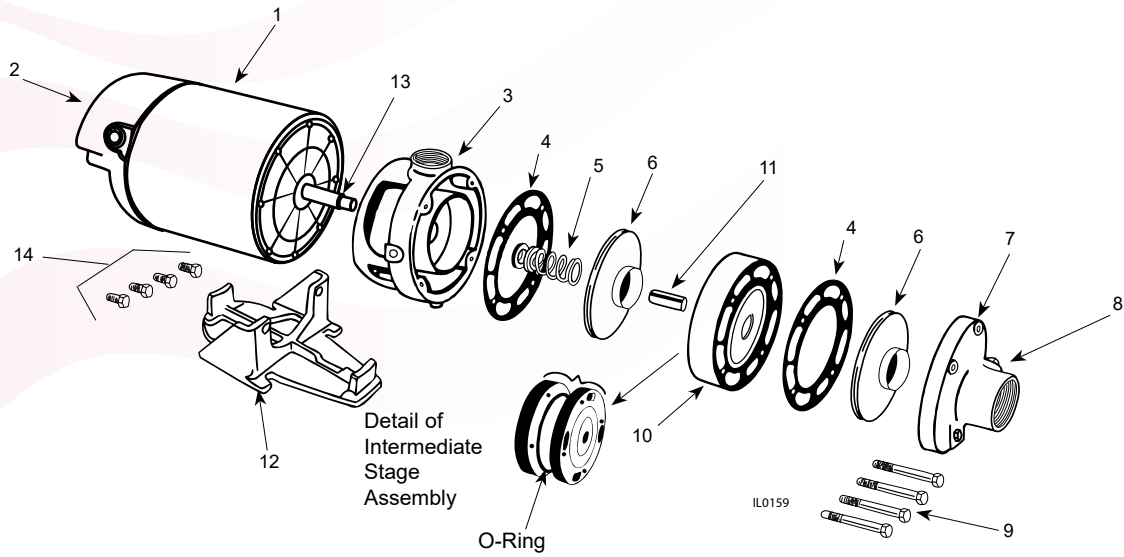
HP	Full Load Amps		Locked-Rotor Torque (Starting Torque) In-Lbs.	Single Phase					3 Phase					
				S.F.	Max. Amb.	Max. Amb. @ SF before Overload Tripping	Breakdown Torque In-Lbs.	Peak Output Power		S.F.	Max. Amb.	Breakdown Torque In-Lbs.	Peak Output Power	
								HP	kW				HP	kW
3/4	14.0	7.0	29	1.5	65° C/149° F	70° C/158° F	42	2.1	1.6	1.5	65° C	49	2.3	1.7
1	18.0	9.0	48	1.4	65° C/149° F	66° C/151° F	52	2.5	1.9	1.4	65° C	74	3.5	2.6
1.5	21.0	10.5	59	1.3	65° C/149° F	66° C/151° F	76	3.8	2.8	1.3	65° C	90	4.3	3.2
2	25.0	12.5	63	1.25	65° C/149° F	66° C/151° F	80	4.0	3.0	1.25	65° C	112	5.3	4.0
3	-	13.5	65	1.0	65° C/149° F	66° C/151° F	95	4.5	3.4	1.0	65° C	125	5.9	4.4

Motor Voltage: Single Phase 1/3 - 2 HP - 115/230; 3HP - 230V 60 Hz.
 Three Phase 1/2 - 2 HP - 208-230/460, 50/60Hz
 Three Phase 3 HP - 208-230/460, 60Hz



High Volume Pressure Booster Pump

CONSTRUCTION MATERIALS - PUMP AND MOTOR



ITEM NO.	DESCRIPTION	MATERIALS
1	Motor Shell	Zinc-Clad Steel
2	Motor Access Cover	Valox
3	Mounting Ring	Cast Iron
4	Gasket	Lexide
5	Mechanical Seal Assembly	Carbon-silicon carbide, stainless steel spring and Buna-N
6	Impeller, Low Lead Brass	Low Lead Brass
6	Impeller, Plastic	Celcon
7	Suction Body w/Clearance Ring	Cast Iron
8	1/4" Plug	Plated Steel
9	3/8 x 3-1/4" Pump thru Bolts (2 stage units)	Plated Steel
9	3/8 x 5" Pump thru Bolts (3 stage units)	Plated Steel
10	Intermediate Stage w/Suction & Hub Clearance Ring	Cast Iron
11	Spacer Sleeve	Cast Iron
12	Base	Cast Iron
13	Pump Shaft	416 Stainless Steel
14	3/8 x 3/4" Motor Mounting Ring Bolts	Plated Steel

