



Banol[®]

PRODUCT INFORMATION

Active Ingredient: Propamocarb hydrochloride 66.5%

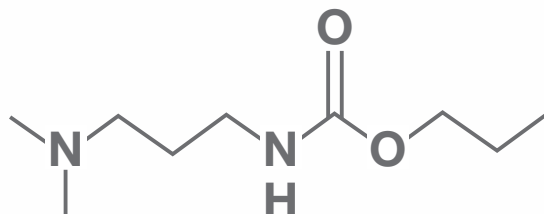
FRAC Group: 28

EPA Registration Number: 432-942

Signal Word: Caution

Formulation: Soluble liquid

REI: 24 hours



Banol[®] is a highly effective, systemic control for *Pythium* and *Phytophthora* on ornamental plants.

Best Uses

- Rotation and resistance management in settings where other products have been overused
- For early-stage ornamental crop production such as seedlings, cuttings and plug trays
- Preventive and curative protection for *Pythium* Blight, *Pythium* Root Rot and *Pythium* Damping Off

Attributes

- Unique multi-site mode of action
- Upwardly systemic, absorbed by the roots and translocated to aerial parts of the plants, protecting roots, stems and leaves
- Excellent residual control with application intervals of 7-21 days
- Non-phytotoxic on young seedlings
- For greenhouses and container-grown nurseries

Application

- For drench applications, apply 20-30 oz./100 gal. of water
- Banol is available in 1-gal. and 2.5-gal. containers

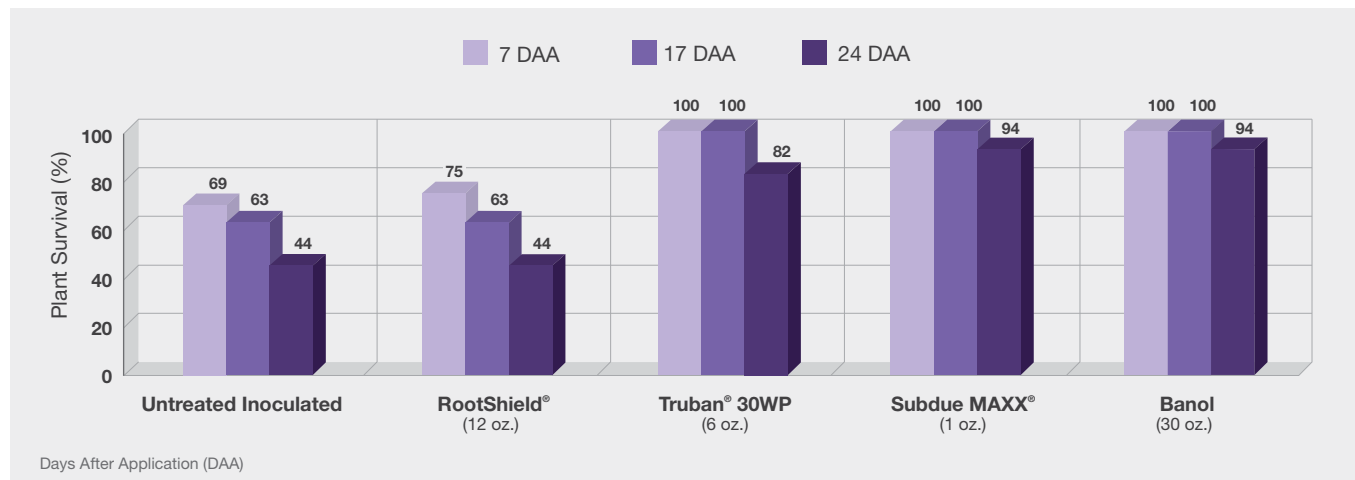


How To Use Banol®

Banol is labeled for prevention of Root Rot and Damping Off disease at all stages of ornamental plant propagation, including seeding, transplanting, and potting.

WHEN TO USE	HOW TO APPLY	RATE PER 100 GALLONS	DISEASES CONTROLLED
Seeding	Treat media prior to sowing	30 fl. oz.	<i>Phytophthora</i> spp. <i>Pythium</i> spp.
Transplant (Seedlings)	Treat media prior to transplant	30 fl. oz.	
Transplant (Cuttings)	Drench cutting bed	20 fl. oz.	
Potting	Dip bare roots prior to potting	20 fl. oz.	
Woody Ornamentals	Drench each container	25 fl. oz.	

Pythium Root Rot on Geranium



Evaluation of Fungicides for Managing Pythium Root Rot of Geranium, Dr. Mary Hausbeck, Michigan State University, 1999