

# ArborMectin™

Broad spectrum tree protection



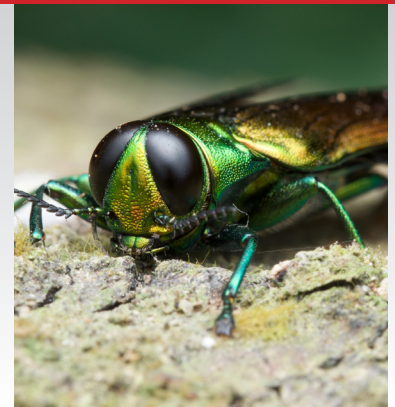
## Invest in the long-term health of your trees



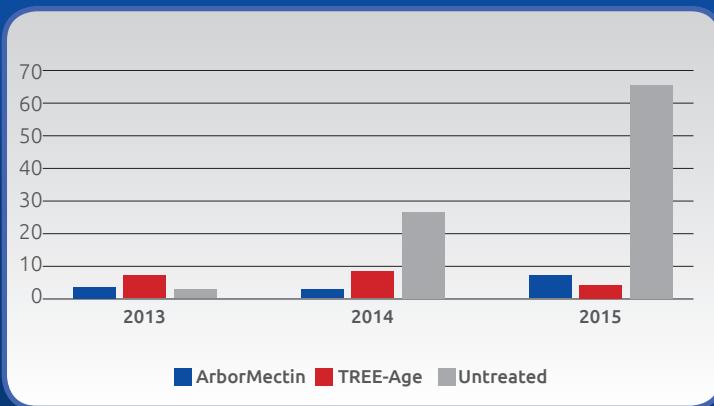
Choose not to treat the tree and risk the high probability that the insect will kill the tree within 1-5 years, depending on tree size.



Treat the tree with ArborMectin to prevent the Emerald Ash Borer from harming or killing the tree.



### PERCENT THINNING OF ASH TREES · LAYFAYETTE, IN



A research trial conducted in Lafayette, IN by university personnel was initiated in May of 2013. Trees of similar sizes were treated with either ArborMectin or TREE-Age® using the Chicago Protocol to determine the dose. Percent canopy thinning ratings were taken in August of 2013, 2014 and 2015

Ash tree on the left treated with ArborMectin in May 2013, tree on right left untreated. Photo taken May 2015.

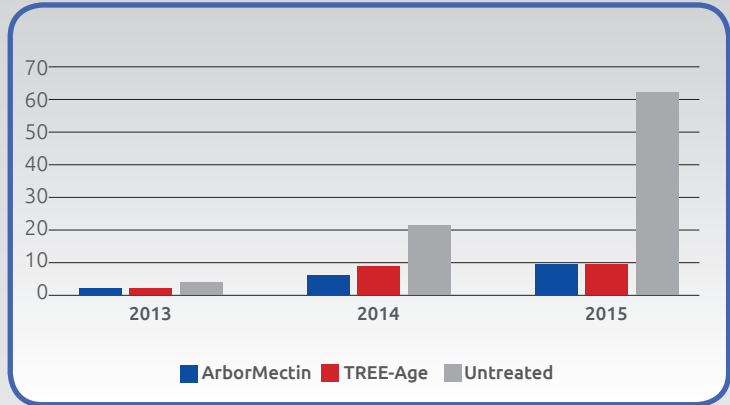






A second research trial was initiated in Lafayette, IN at the Columbia Park in May, 2013. Trees of similar sizes were treated with either ArborMectin or TREE-Age® using the Chicago Protocol to determine the dose. Percent canopy thinning ratings were taken in August of 2013, 2014 and 2015

PERCENT THINNING OF ASH TREES · COLUMBIA PARK, IN



Both ArborMectin and Tree-Age treatments in these two research trials provided equivalent control of Emerald Ash Borer for 2 years, while the untreated trees had 62-65% canopy thinning.

This is a picture of a 44 inch DBH ash tree in Chicago that was treated with ArborMectin and was protected from Emerald Ash Borer.

| TREE ISSUE                   | TARGET PEST   |
|------------------------------|---|
| Seed & Cone                  | Pine Coneworm<br>Pine Cone Seed Bug<br>Cone Beetle  |
| Bud & Leaf                   | Aphid, Bagworm, Fall Webworm, Japanese Beetle, Gypsy Moth, Mimosa Webworm, Oak Worm, Tussock Moth, Leafminer (such as Lepidoptera, Coleoptera, Hymenoptera)<br>Honeylocust Plant Bug, Pine Needle Scale, Sawfly (such as Elm, Pine), Conifer Mite<br>Tent Caterpillar (such as Eastern, Forest, Pacific, and Western) Western Spruce Budworm, Winter Moth |
| Shoot, Stem, Trunk, & Branch | Flatheaded Borer (such as adult and larvae of Bronze Birch Borer, Emerald Ash Borer, and Two-lined Chestnut Borer)<br>Clearwing Borer (such as Ash and Sequoia Pine Pitch Tube Moth)<br>Ambrosia Beetle<br>Roundheaded Borer (excluding Asian longhorn beetles)<br>Black Oak Gall Wasp<br>Pinewood Nematode   |

TIP & POUR BOTTLE

BROAD SPECTRUM  
2 YEAR CONTROL  
ON MOST PESTS

1 QUART (946ML)  
4 QUARTS PER  
CASE

4% EMAMECTIN  
BENZOATE

EPA SIGNAL  
WORD: CAUTION



See [ArborMectin.com](http://ArborMectin.com) for full list of pests controlled, rates, and application techniques.