

Aquascape®

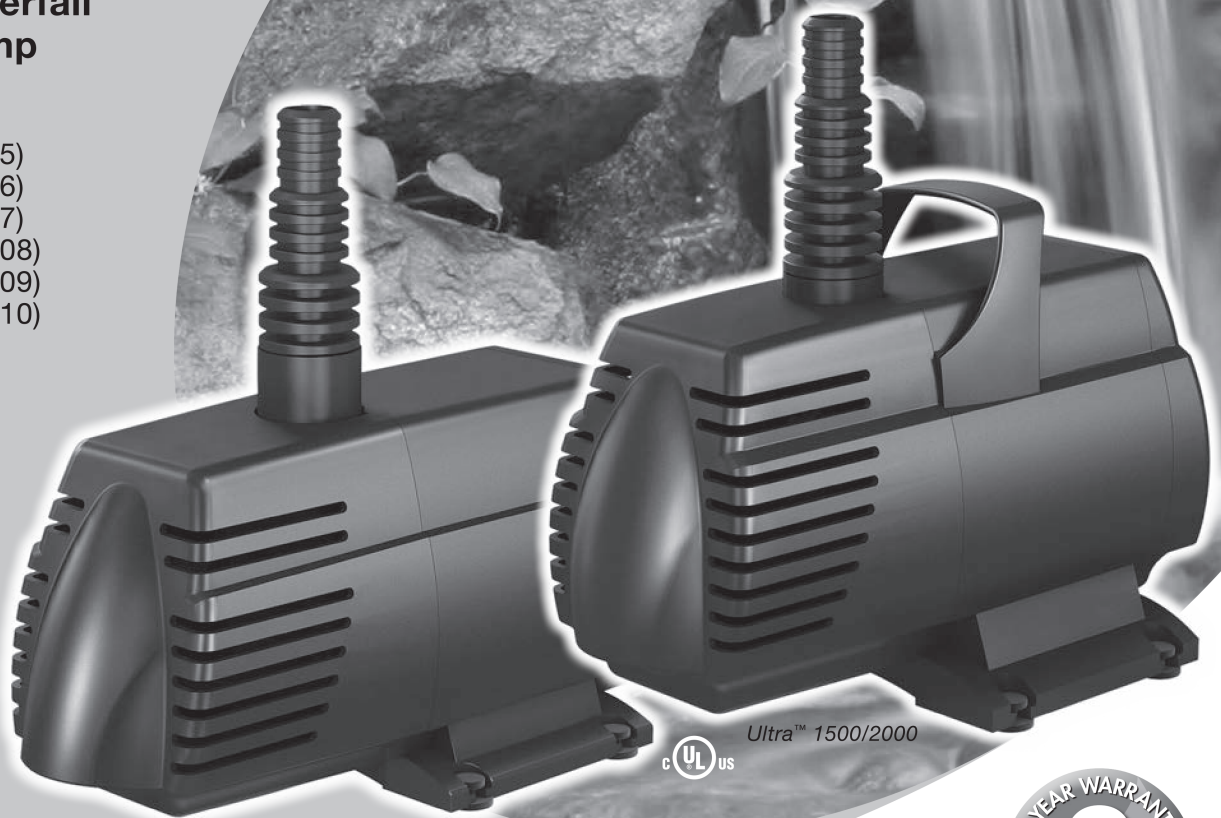
ULTRA™ WATER PUMP

**Submersible
fountain, waterfall
and filter pump**

For Models:

- 400 (Item #91005)
- 550 (Item #91006)
- 800 (Item #91007)
- 1100 (Item #91008)
- 1500 (Item #91009)
- 2000 (Item #91010)

*Available in flow rates
from 400 to 2000 GPH.*



Ultra™ 400/550/800/1100



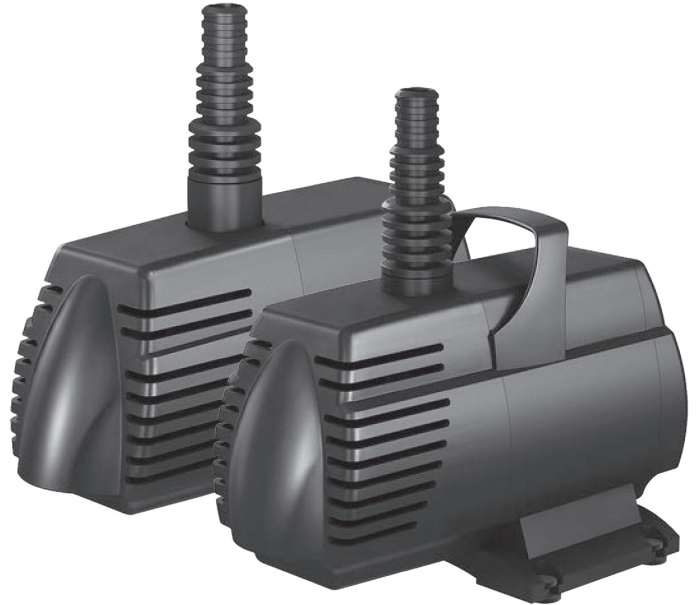
Ultra™ 1500/2000





ULTRA™ WATER PUMP

Thank you for choosing the Aquascape Ultra™ pump. At Aquascape, our goal is to supply our customers with the best valued products in water gardening. We hope you enjoy your purchase and thank you for choosing Aquascape. *Your Paradise. Our Passion.®*



3 Year Warranty

The Aquascape Ultra™ Pump is guaranteed for three years from date of purchase. Proof of purchase required. Warranty does not cover damage resulting from negligent handling, misuse or lack of reasonable maintenance for care. Warranty is valid against defects due to material and the company's workmanship only. The sole obligation shall be to replace the defective unit with a suitable replacement unit. Units should be checked for proper operation prior to returning as defective. No liability for loss or damage of any nature or kind, whether arising out of or from the use of the product, whether defective or not defective, is assumed by Aquascape, Inc. or its affiliates.

Table of Contents

Introduction	3
Contents/Spare Parts	3
Safety Information	4
Installation	4
Operation and Maintenance	6
Troubleshooting	8

Contact Us

For more information about our company or products please visit our website at www.aquascapeinc.com or call (US) 1-866-877-6637 (CAN) 1-866-766-3426.



VISIT OUR WEBSITE



DOWNLOAD A FREE COPY OF OUR CATALOG

Introduction

Aquascape Ultra™ Pumps are the complete solution for small ponds, fountains and water features. This all-in-one kit includes a three-way diverter valve and multi-size connection, making it adaptable to almost any hose or tubing size. Ultra pumps are ideal for supplying water to

run fountains, water features, external filters and spitting ornaments. This combination of energy-efficient mag-drive performance, flow, and ease of maintenance make this pump the ideal choice for discriminating pond owners.

Contents

(1) Ultra™ Pump

#91055 Ultra™ Pump Discharge Fittings Kit

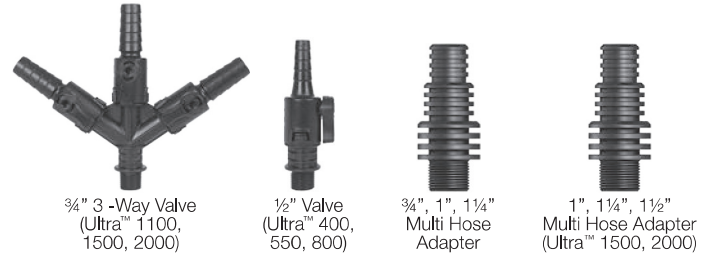
For Models 400/550/800

- (1) ½" x ½" Barb Valve
- (1) ½" Multi Hose Adapter x ¾", 1", 1¼"

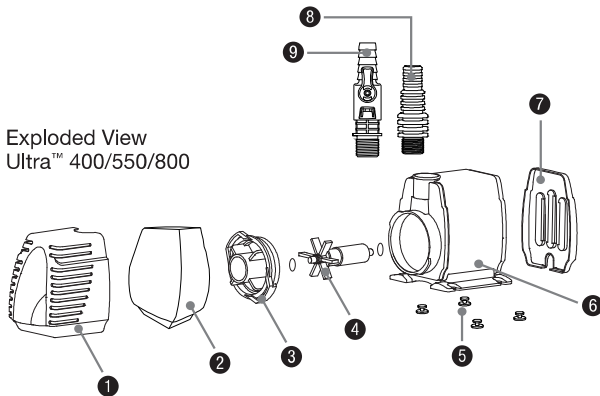
#91057 Ultra™ Pump Discharge Fittings Kit

For Models 1100/1500/2000

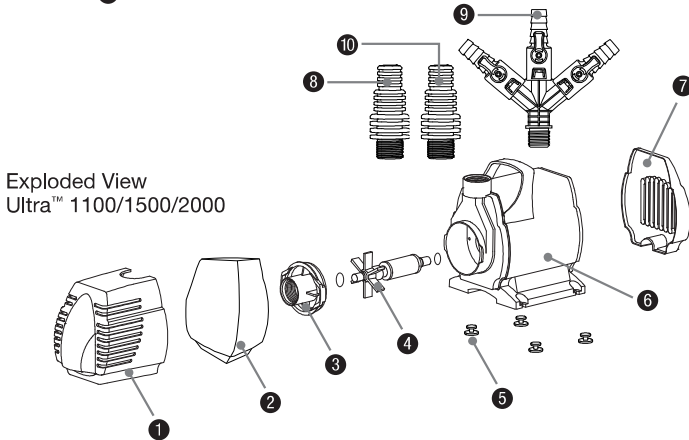
- (1) ¾" Multi Hose Adapter x ¾", 1", 1¼"
- (1) ¾" 3-Way Valve x ¾" Barbed Discharge
- (1) ¾" Multi Hose Adapter x 1", 1¼", 1½" (1500 & 2000)



Exploded View Ultra™ 400/550/800



Exploded View Ultra™ 1100/1500/2000



Parts List For Models 400/550/800 only

- 1 Front Cover
- 2 Filter Sponge
- 3 Water Chamber Assembly
- 4 Impeller Assembly
- 5 Rubber Feet
- 6 Main Housing
- 7 Back Cover
- 8 ¾", 1", 1½" Multi Hose Adapter
- 9 ½" Barb Valve

Parts List For Models 1100/1500/2000 only

- 1 Front Cover
- 2 Filter Sponge
- 3 Water Chamber Assembly
- 4 Impeller Assembly
- 5 Rubber Feet
- 6 Main Housing
- 7 Back Cover
- 8 ¾" x ¾", 1", 1¼" Multi Hose Adapter
- 9 ¾" 3-way Valve
- 10 ¾" x 1", 1¼", 1½" Multi Hose Adaptor (1500 & 2000)

Replacement Parts

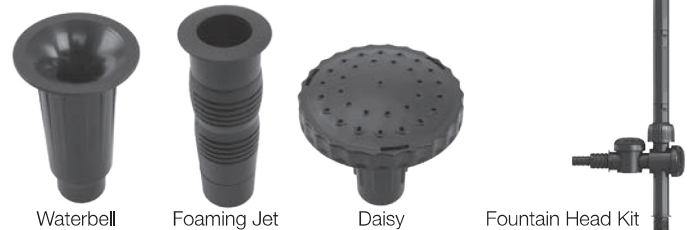
Contact your local dealer for replacement parts required due to damage or wear.

Pump Model	Front Cover Kit	Filter Sponge	Impeller Kit	Discharge Fittings Kit
400	91050	91033 (4/pkg)	91039	91055
550	91051	91034 (4/pkg)	91040	91055
800	91051	91035 (4/pkg)	91041	91055
1100	91052	91036 (2/pkg)	91042	91057
1500	91053	91037 (2/pkg)	91043	91057
2000	91053	91038 (2/pkg)	91044	91057

Optional Accessories

Ultra Pump™ Fountain Head Kits

If you currently own an Ultra Pump™ and want to add a new dimension to your pond with the addition of a fountain, Aquascape makes it simple with the addition of the new Ultra Pump™ Fountain Head Kit. Kit comes complete with three fountain heads: Water Bell, Foaming Jet, and Daisy Fountain along with an integrated diverter valve to adjust the fountain head height, as well as allows for the diversion of water to an external filter or waterfall.



Ultra™ Pump Fountain Head Kit Specs

Model #	Kit Item #	Waterbell Fountain Spray Diameter	Foaming Jet Spray Height	Daisy Fountain Spray Height
Ultra™ 400	91045	up to 12"	up to 12"	up to 40"
Ultra™ 550	91045	up to 15"	up to 16"	up to 47"
Ultra™ 800	91045	up to 21"	up to 18"	up to 52"
Ultra™ 1100	91046	up to 31"	up to 20"	up to 76"
Ultra™ 1500	91046	up to 34"	up to 22"	up to 86"
Ultra™ 2000	91046	up to 36"	up to 24"	up to 96"

Safety Information



WARNING: Risk of electric shock – This pump has not been approved for use in swimming pool or marine areas.



WARNING: To provide continued protection against risk of electric shock, connect to properly grounded, ground fault circuit interrupter (GFCI) outlets only, using the following guidelines:

- (A) Have a qualified electrician install a properly grounded receptacle outlet, acceptable for outdoor use and protected from snow and rain.
- (B) Inspect cord before using.
- (C) Do not use extension cords.

- (D) Any wiring of pumps should be performed by a qualified electrician to ensure code compliance and user safety.
- (E) Unplug pump at receptacle outlet when not in use or before removal from pond.
- (F) To reduce risk of electrical shock, all wiring and junction connections should be made per local codes. Requirements may vary depending on usage and location.
- (G) The power cable should be protected at all times to avoid punctures, cuts, bruises and abrasions.
- (H) Never handle power cords with wet hands.
- (I) Do not remove cord and strain relief. Do not connect conduit to pump.
- (J) Do not use power cable to lift pump.

Installation

- Always operate the pump fully submerged. Failure to do so will overheat the pump and cause it to fail, thus voiding the warranty. **DO NOT OPERATE DRY!**
- Use only in fully assembled state, paying particular attention to be sure that both the filter screen and sponge are attached to the pump. Failure to operate the pumps without these filter screens will allow large debris to enter the pump causing the pump to fail, voiding the warranty.
- Do not wear loose clothing that may become entangled in the impeller or other moving parts.
- Keep clear of suction and discharge openings. **DO NOT** insert fingers in pump with power connected.
- Do not pump hazardous materials or liquids other than water, such as oil, or organic solvents.
- Do not block or restrict discharge.
- Products returned must be cleaned, sanitized, or decontaminated, as necessary, prior to shipment to ensure

that employees will not be exposed to health hazards in handling said material. All applicable laws and regulations shall apply.



IMPORTANT: Aquascape, Inc. is not responsible for losses, injury, or death resulting from a failure to observe these safety precautions, misuse or abuse of pumps or equipment.

Ultra™ Pump Specifications

- Input Voltage: 120V AC
- Input Frequency: 60 Hz
- Submersible pump
- For outdoor or indoor use
- Thermally protected
- This pump has been evaluated for use with water only
- Input Amps & Wattage: *See chart on next page*



VIDEO ON ULTRA
PUMP MAINTENANCE &
TROUBLESHOOTING TIPS.

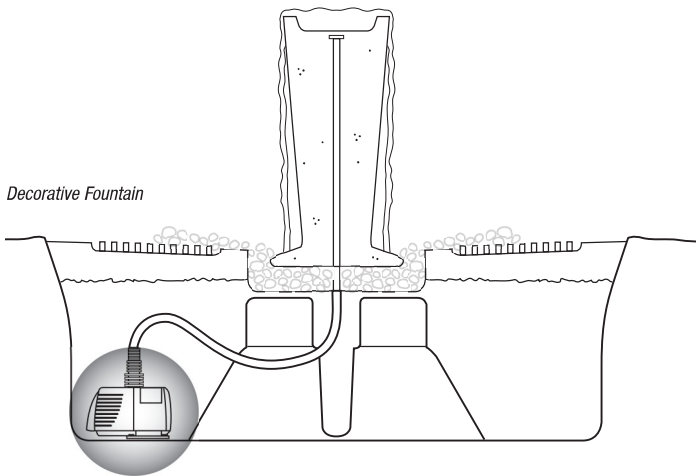
Ultra™ Pump Specs

Model Number	400	550	800	1100	1500	2000
Item Number	#91005	#91006	#91007	#91008	#91009	#91010
Maximum Flow Rate	370 GPH	528 GPH	793 GPH	1110 GPH	1480 GPH	1982 GPH
Maximum Head Height	7.55 ft	7.87 ft	9.19 ft	12.14 ft	16.4 ft	20.01 ft
Motor Type	Mag-Drive	Mag-Drive	Mag-Drive	Mag-Drive	Mag-Drive	Mag-Drive
Wattage	24	33	58	92	153	250
Amperage	.40	.55	.80	.85	1.46	2.60
Power Cord Length	12 ft	12 ft	25 ft	25 ft	25 ft	25 ft
Discharge Hose Diameter	1/2", 3/4", 1", 1 1/4"	1/2", 3/4", 1", 1 1/4"	1/2", 3/4", 1", 1 1/4"	3/4", 1", 1 1/4"	3/4", 1", 1 1/4", 1 1/2"	3/4", 1", 1 1/4", 1 1/2"
Warranty	3 Year Limited	3 Year Limited	3 Year Limited	3 Year Limited	3 Year Limited	3 Year Limited

Typical Installation in a Pond or Decorative Fountain

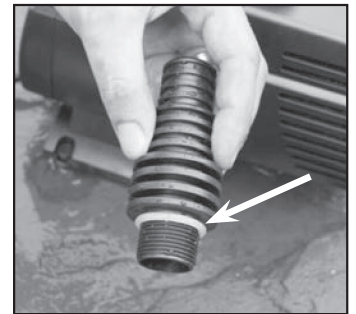
- The Ultra™ Pump is designed to be submerged directly into the pond or decorative fountain container. To maximize pond circulation, locate the pump as far away as possible from the location of the water entering back into the water feature.

Pond with external filter



- The Ultra™ Pump is designed with a base that orientates the discharge vertically. If space is limited or plumbing set-up requires the discharge to be positioned horizontally, the pump can be positioned on its side.
- It is recommended that the pump **NOT** be positioned in the deepest area of the pond. This will protect the fish by preventing the pond from completely draining in the case of leak in the plumbing or filter. Bricks or stones can be used, if needed, to raise the pump up off the bottom of the pond.

- The Ultra™ Pump includes an assortment of fittings to choose from. Select the appropriate fitting(s) needed for your application. Slip the O-ring seal over the threaded portion of the fitting.



- The Multi Hose Adapter will accommodate different diameters of tubing.

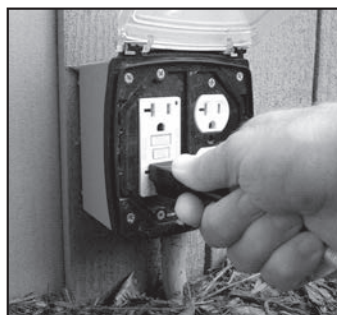


- The convenient 3-Way Diverter Fitting provides you with the ability to connect and adjust the flow rates to as many as three different pumping locations. Simply adjust the valve on the 3-Way Diverter Fitting to dial in the desired water flow. If you are not using all three valves, close off the unused valve to maximize the amount of water flow to the remaining valves.



fitting on the filter before attaching the tubing/hose. Once the fitting is in place, attach the tubing/hose onto the fitting with a twisting motion pushing it into place.

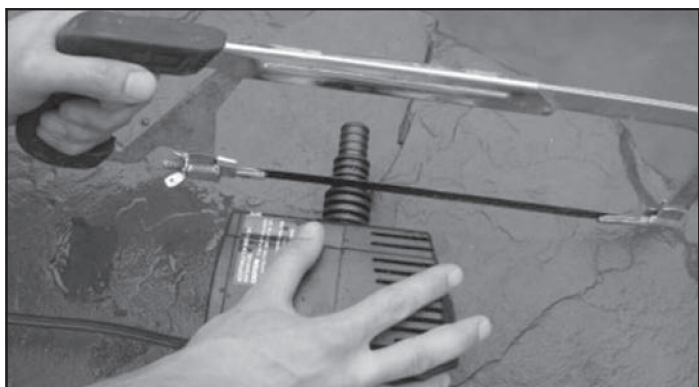
- Connect the other end of the pump tubing to the pond filter, such as a biological filter, waterfall spillway or pressurized filter or to a decorative fountain or spitter.



- Connect the pump to an outlet that is protected by a ground fault interrupter. Once the pump is running and water is circulating through the filter(s) or waterfalls, check for any fitting or waterfall leaks where the external connections are made.

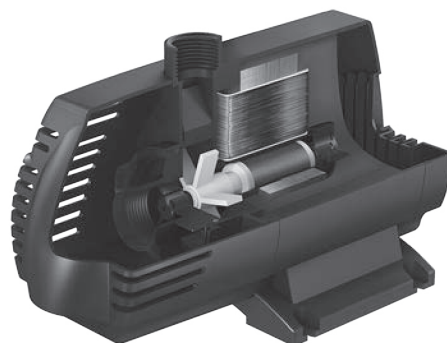
Operation and Maintenance

- If using a diameter pipe larger than the smallest section of the Multi Hose Adapter, trim off the smaller sections to avoid any flow restriction.



- **Filter Screens** – Do not remove the pump cover-inlet screen or filter sponge while operating the pump. Operating the pump without the front cover or filter sponge can allow large debris to enter the pump causing the pump to fail, thus voiding the warranty.

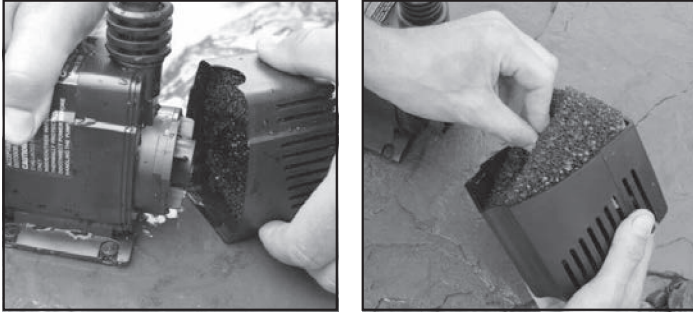
- Attach tubing to the fitting. If tubing is loose on fitting use a hose clamp (not included) to secure tubing onto the fitting.
- In some instances the tubing/hose may be tight and difficult to use with hose fitting barbs. If this is the case we recommend heating the hose with the use of a hair dryer or simply dipping the hose for a few seconds in very hot water. Lubrication can also be used; we recommend silicone grease or olive oil. We recommend putting the



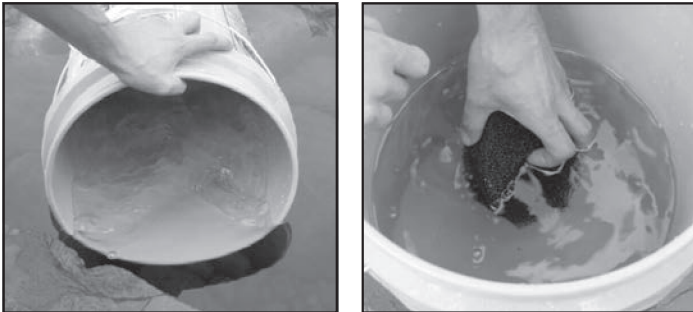
- **Filter Screen Cleaning** – We recommend inspecting your pump on a regular basis to make sure it is functioning properly. Always disconnect the power before performing maintenance on the pump. If you notice the water flow rate is diminished, it may be due to the pump's filter screen or sponge becoming clogged with debris. In many cases the clogged screen can be cleaned by reaching in to the pump and removing, by hand, any debris from the filter screen. If

there is a lot of debris and/or the debris is difficult to clean, you may need to remove the pump from the pond or basin for a more thorough cleaning. A garden hose can be used to spray off any debris stuck on the filter screen or sponge. Be sure to replace both the screen and sponge and make sure they are firmly attached to the pump body, before lowering the pump back into the water.

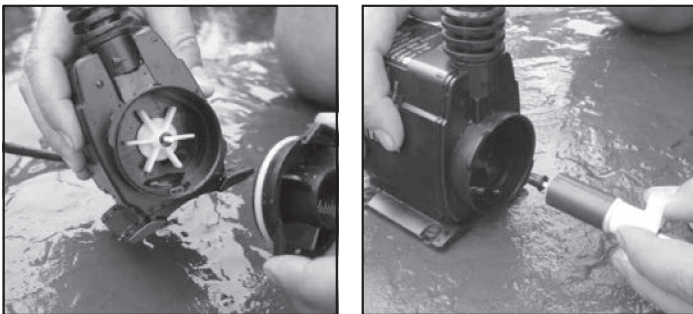
- The outer screen is designed to pop off when it is gently pulled from either side.



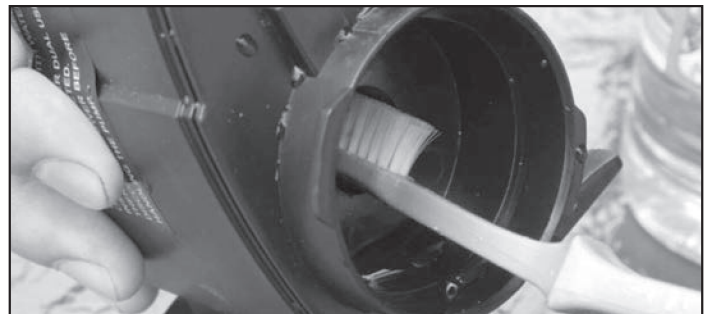
- The pre-filter sponge is designed to protect the pump from fine particles, such as sand or other pond debris, that could clog or damage the interior of the pump. Clean the filter sponge using a bucket of pond water or rinse off with a garden hose.



- **Internal Pump Cleaning** – If you have thoroughly cleaned the filter screen and sponge on the pump and still have diminished flow rates, you will need to remove the water cover chamber by rotating it about ¼ turn counter clockwise past the tabs and pulling it off. This will expose the impeller assembly to allow for closer inspection. Carefully remove the impeller from the pump, being careful not to lose the two plastic bearing washers on either end of the impeller or the centering bushings that center the ceramic impeller shaft on both ends.



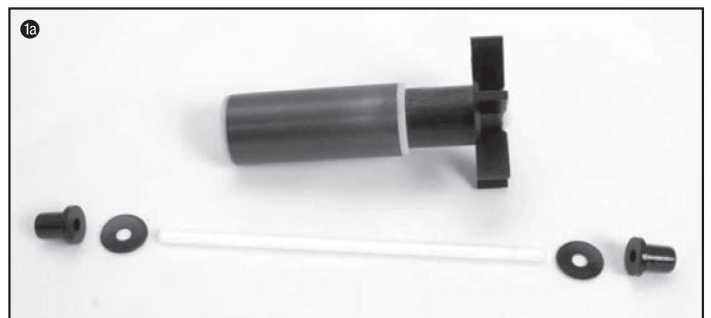
- If your rotor assembly impeller and internal pump body have excessive scale build-up, clean with a mild acid, such as white vinegar or non-abrasive calcium, lime and rust remover product using a sponge or soft-bristled brush that won't scratch. Removing scale build-up will allow your pump to run like new again.



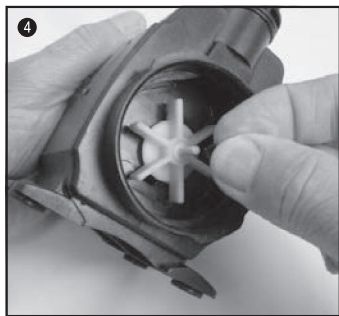
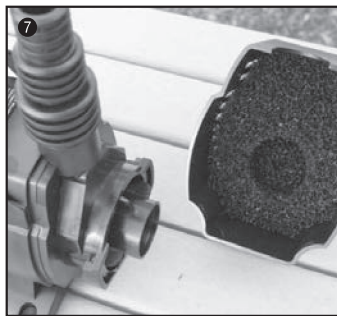
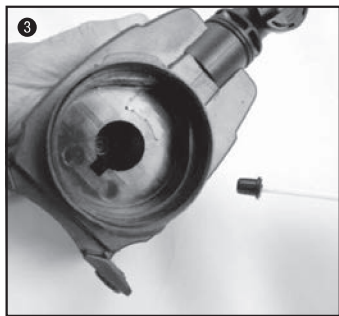
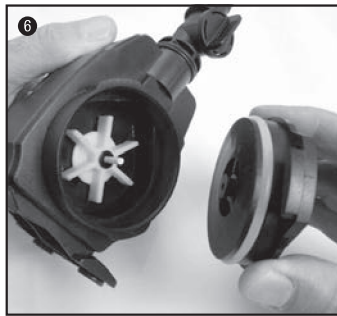
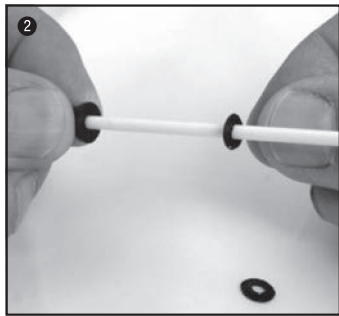
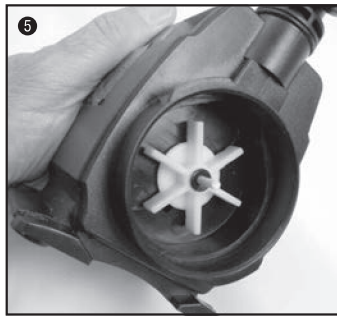
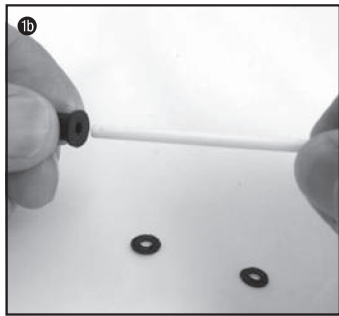
Replacing the Impeller

- The impeller assembly is the only moving part on the Ultra™ Pump and will experience wear and tear. If you've cleaned the pump, as described above, and still experience poor pump performance, it is most likely time to replace the impeller. Replacing the impeller is extremely easy. Replacement Impeller Kits are available through your local Aquascape® dealer.

- 1a. Note the orientation of parts in the photo below. The replacement impeller kits include all parts shown. Make sure to remove all of the original parts from the inside of the pump before installing the replacement impeller kit.



- 1b. A centering bushing is required on both ends of the impeller shaft; one bushing is located inside the pump and an outer bushing sits in the Water Chamber Cover.
2. Slide the first interior bearing washer onto the ceramic shaft.
3. Place the ceramic impeller shaft into the pump, checking to be sure the centering bushing seats inside the pump.
4. Carefully slide the impeller back onto the shaft. Use caution: the Impeller Assembly is magnetic and will be forcefully pulled back into the pump.



5. Install second outer bearing washer over the impeller shaft.
6. Replace Water Chamber Assembly, containing the impeller shaft centering bushing by sliding it over the impeller shaft and then rotating it clockwise to lock it into place over the tabs on the pump housing.
7. Replace the Pump Cover and Filter Sponge by snapping them back onto the pump housing.

- **Winter Storage** – If concerned about possible freeze damage, disconnect the tubing from the discharge fitting and remove the pump from the water. Clean the pump and inlet screens with fresh water and store the pump in a frost-free location. The pump can be run during cold weather, if desired, but should be removed in the event of a power failure to prevent any freeze damage to either the pump or the piping.

Troubleshooting



- **Reduced Water Flow**

- It may be necessary to clean the front cover, filter sponge and impeller.

- **Pump Hums and Doesn't Push Water**

- It may be necessary to clean the front cover, filter sponge and impeller.
- Remove the water chamber cover and inspect and clean the impeller rotor assembly and internal pump body.
- Make sure nothing is blocking or wrapped around the impeller.
- Make sure the pump is receiving the correct voltage.

- **Pump Not Working**

- The ground-fault circuit-interrupter (GFCI) may have tripped
- The pump is not receiving the correct voltage.

For more information about our company or products, please visit our website at www.aquascapeinc.com or call us at (US) 1-866-877-6637 (CAN) 1-866-766-3426