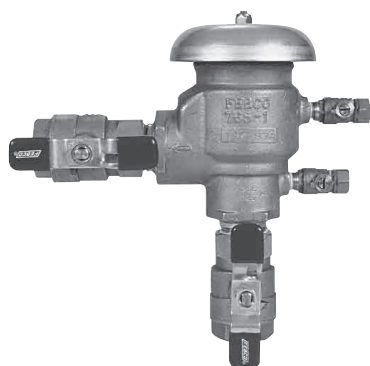


# Series 765

## Pressure Vacuum Breakers

Size: 1/2" – 2" (15 – 50mm)



765



765 U

### Features

- All bronze body for durability. One check valve and an air opening port in one assembly.
- Lightweight poppet seals air opening under minimum flow conditions.
- Simple service procedures. All internal parts serviceable in line from the top of the unit.
- Designed for minimum head loss.
- Engineered plastic bonnet protect valve bodies from freeze damage.
- Optional union end ball valves for easy removal and ultimate freeze protection.
- End Connections – NPT ANSI/ASME B1.20.1

### Pressure – Temperature

Max. Working Pressure: 150psi  
(10.3 bar)

Hydrostatic Test Press: 300psi  
(20.7 bar)

Temperature Range: 32°F to 140°F  
(0°C to 60°C)

The FEBCO Series 765 Pressure Vacuum Breakers are used to protect non-potable water applications against health hazard and non-health hazard backsiphonage conditions in industrial plants, cooling towers laboratories, laundries, swimming pools and lawn sprinkler systems.

### Materials

Main Valve Body: Bronze

Elastomers: Nitrile

### Models

- Union End Ball Valves

### Applications

PVB assemblies are used to protect non-potable water applications against health hazard and non-health hazard backsiphonage conditions for non-potable applications in industrial plants, cooling towers laboratories, laundries, swimming pools and lawn sprinkler systems.

### Typical Installation

Pressure Vacuum Breaker assemblies should be installed at least 12" (300mm) above the highest piping and outlet downstream of the assembly to preclude backpressure. Assemblies should be installed so they are easily accessible for maintenance, periodic testing, and where discharge will not be objectionable. They should be protected from freezing. If the assemblies are subject to freezing temperatures, the freeze protection procedures outlined in "Service Instruction Freeze Protection Model 765" must be followed. Assemblies must not be installed where backpressure could occur.

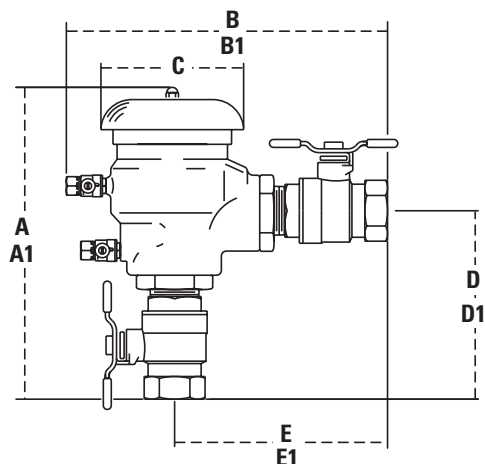
The discharge pressure shall be maintained above 3.0psi on 1/2" – 1 1/4" (15 - 32mm) sizes and 5.0psi on 1 1/2"- 2" (40 - 50mm) sizes to insure seating of the spring loaded air inlet poppet.

### Approvals – Standards

- Approved by the Foundation for Cross-Connection Control and Hydraulic Research at the University of Southern California.



## Dimensions — Weights



### Series 765

SIZE (DN)		DIMENSIONS																WEIGHT			
		A		A1 (union)		B		B1 (union)		C		D		D1 (union)		E		E1 (union)			
in.	mm	in.	mm	in.	mm	in.	mm	in.	mm	in.	mm	in.	mm	in.	mm	in.	mm	in.	mm	lbs.	kgs.
½	15	6¼	159	7	178	6¾	172	7½	197	2½	64	3¾	95	4½	114	4¼	108	5	127	2.6	1.2
¾	20	6½	165	7⅜	187	7	178	7⅞	200	2½	64	4	102	4⅞	124	4½	114	5⅜	137	2.9	1.3
1	25	8¾	222	9⅝	245	9	229	9⅝	252	4	102	5¼	133	6⅜	157	6	152	6⅝	176	5.9	2.7
1¼	32	9¾	235	10¼	260	10	254	11	279	4	102	6¼	159	7¼	184	7	178	8	203	7.0	3.2
1½	40	11¼	299	12⅞	327	11½	292	12⅝	321	6½	165	7¼	184	8⅝	213	7¾	197	8¾	225	14.8	6.7
2	50	12½	318	13¾	349	12¼	311	13½	343	6½	165	8	203	9¼	235	8½	216	9¾	248	16.5	7.5

Weights shown do not include union end ball valves and are approximate. Dimensions shown are nominal.

#### NOTICE

Inquire with governing authorities for local installation requirements.