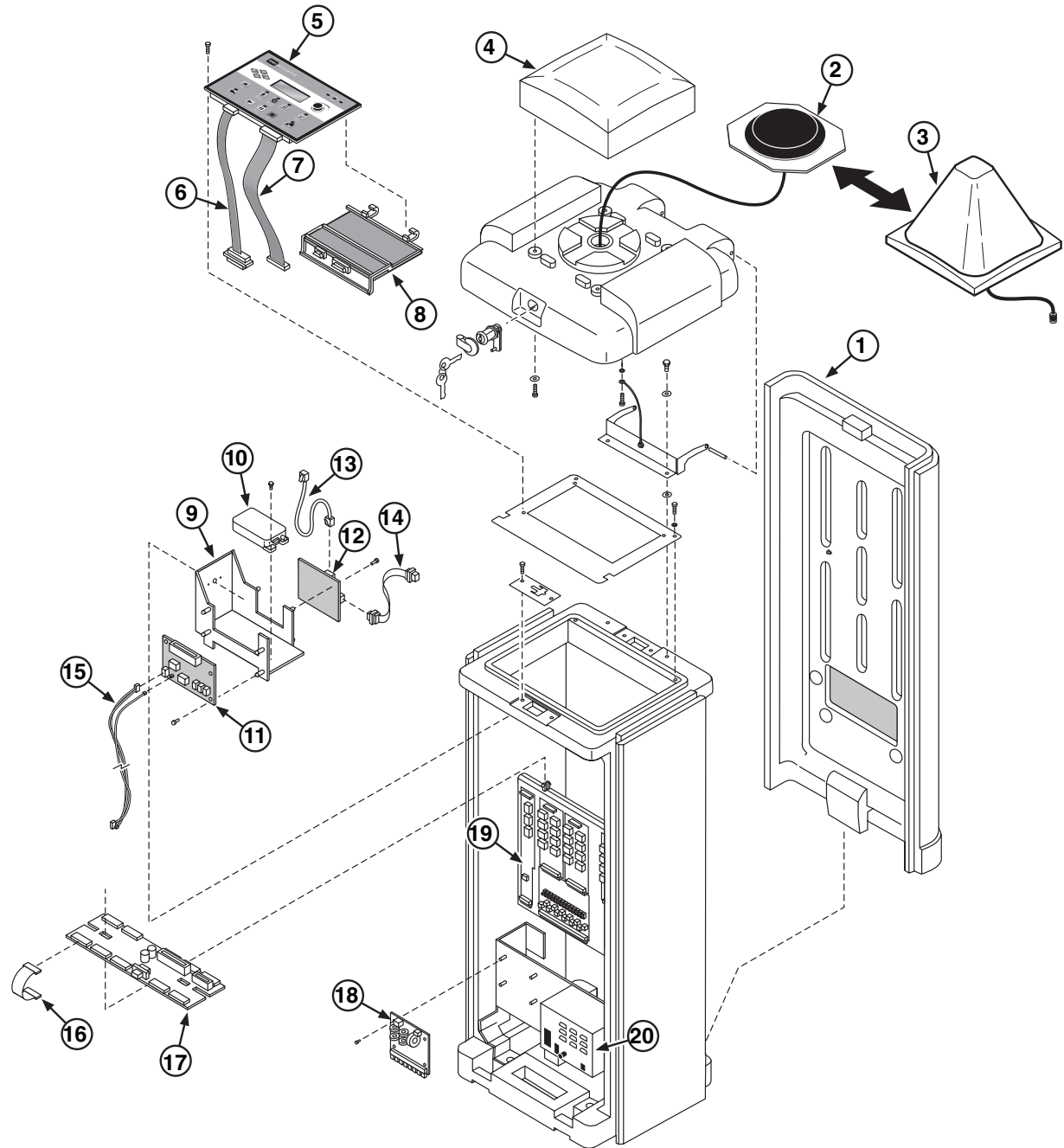


# Network VP Satellite (2006 and Later Model) – Plastic Cabinet



Item No.	Part No.	Description	Quantity Per Assy.
1	-----	Satellite Plastic Pedestal & Components (See <b>Plastic Satellite Pedestal</b> Section.)	1
2	-----	Antenna Assy., Plastic Pedestal (See Service Item 102-6808)	1
3	-----	Dome Antenna Assy., Plastic Pedestal (See <b>Plastic Satellite Pedestal</b> Section.)	1
4	102-4778	Cover, Satellite Lid	
5	102-3497SK	Timing Mechanism, VP Satellite	1
6	102-4573SK	Cable Assy., T/M to Modem	1
7	102-3030SK	Cable Assy., T/M to Distribution	1
8	-----	Standard Modem (See Service Item 89-9026)	1
9	-----	Bracket, Radio Assy. (UHF Models Only)	1
10	363-4638SK	Maxon Radio (UHF Models Only) (See Service Item 363-4638)	1
11	89-7701	*Universal Modem (UHF Models Only)	1
12	102-3125SK	*Radio Interface Board (UHF Models Only)	1
13	363-3619SK	*RJ-45 Cable Assy. (UHF Models Only)	1
14	102-3257SK	*DB-9 Cable Assy. (UHF Models Only)	1
15	-----	Cable Assy., Modem to Surge Board (UHF Models Only) (See Service Item 89-9044)	1
16	102-0670	Ribbon Cable, Power Distribution Board to Output Module	**
17	102-2782SK	Distribution Board	1
18	89-8589	PCB Assy. Surge Board	**
19	-----	VP Internal Components (See p. 212 for Parts List)	**
20	-----	Power Supply Assy. (See p. 213 for Parts List)	1
		<b>SERVICE ITEMS</b>	
	363-4185SK	Battery, VP Back-up, Service	
	89-9044	Cable Assy., Surge to Modem & Surge to Terminal Block	
	102-6808	Kit, Service, Antenna Assy., Plastic Pedestal (Includes Item 2)	
	89-9026	Service, Standard Modem (2-Wire Modem Models Only)	
		* Order Through Finished Goods Distribution System—Minneapolis	
		** Quantity Varies With Model	