

☒ SELECT DESIRED COLOR:

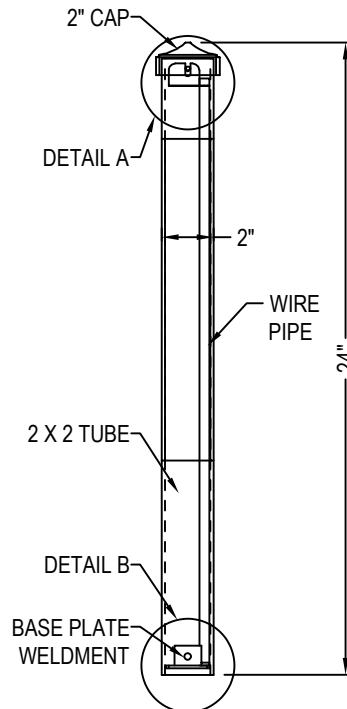
☐ RUST WEATHERED STEEL

☐ BLACK POWDER COAT

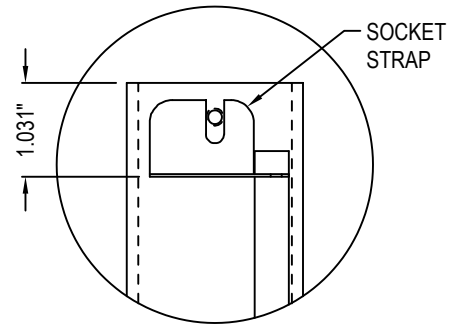
☐ DARK BRONZE POWDER COAT



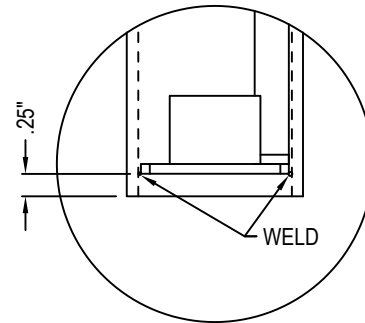
PERSPECTIVE



SIDE VIEW



DETAIL A



DETAIL B

SPECIFICATIONS:

WARRANTY: LIFETIME FIXTURE BODY

MATERIAL: 12 GAUGE STEEL

LAMP TYPE: SINGLE COB G4 BIPIN

RATED VOLTAGE: 9 - 15V

MAX VOLTAGE: 20W

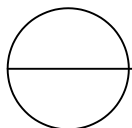
LEAD WIRE: 25'

INCLUDED LAMP: G4 LED BIPIN

INCLUDED MOUNT: 13" HEAVY DUTY GROUND STAKE

NOTES:

1. INSTALLATION TO BE COMPLETED IN ACCORDANCE WITH MANUFACTURER'S SPECIFICATIONS.
2. DO NOT SCALE DRAWING.
3. THIS DRAWING IS INTENDED FOR USE BY ARCHITECTS, ENGINEERS, CONTRACTORS, CONSULTANTS AND DESIGN PROFESSIONALS FOR PLANNING PURPOSES ONLY. THIS DRAWING MAY NOT BE USED FOR CONSTRUCTION.
4. ALL INFORMATION CONTAINED HEREIN WAS CURRENT AT THE TIME OF DEVELOPMENT BUT MUST BE REVIEWED AND APPROVED BY THE PRODUCT MANUFACTURER TO BE CONSIDERED ACCURATE.
5. CONTRACTOR'S NOTE: FOR PRODUCT AND COMPANY INFORMATION VISIT www.CADdetails.com/info AND ENTER REFERENCE NUMBER 5274-004



COURTYARD SERIES: CORTEN STEEL BOLLARDS

DECORATIVE STEEL BOLLARD PATHWAY LIGHT: 2 X 2 SPIRAL DESIGN