



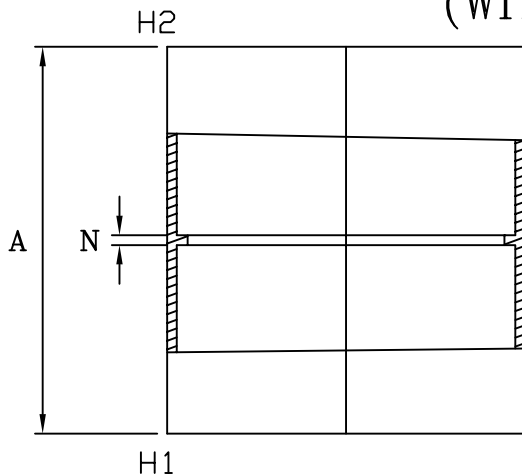
MULTI FITTINGS

LAYING LENGTH

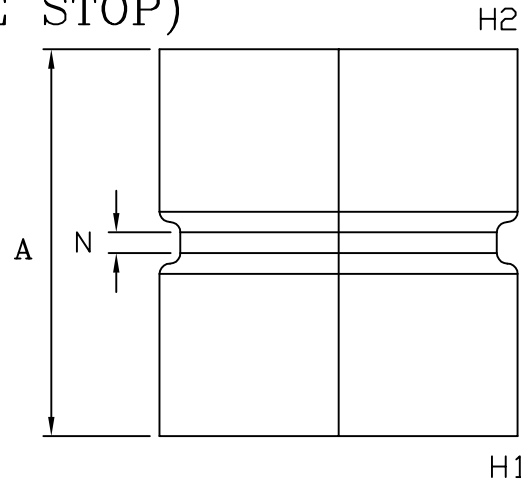
ISSUE DATE: MAY 10/05

SUPERCEDES: JAN 19/01

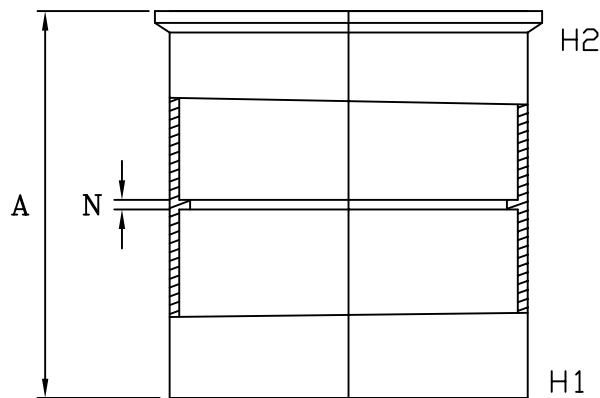
COUPLING (HxH) (WITH PIPE STOP)



INJECTION MOLDED FITTING (M)



FABRICATED FITTING (F)



INJECTION MOLDED FITTING (*M)

	SIZE H1xH2	PART NUMBER	REFERENCE NUMBER	A REF	N REF	
M	2x2	040600	-	2.875	0.125	056
*M	3x3	040602	281832	3.125	0.125	056
*M	4x4	040604	281840	3.625	0.125	084
M	6x6	040606	281865	6.125	0.188	056
M	8x8	040631	281881	8.250	0.200	084
F	10x10	040608	281810	13.000	-	082
F	12x12	040612	281812	15.000	-	082
	15x15	040609	271815	-	-	P
	18x18	040603	-	-	-	P
	24x24	040078	-	-	-	P