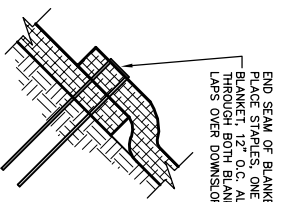


EXTEND BLANKET A MINIMUM OF 3'-0" OVER CREST OF SLOPE, SEE DETAIL 4/11. THE DISTANCE FROM A MINIMUM OF 3'-0" IS NOT AVAILABLE AT THE CREST OF SLOPE OR IF OVERLAND FLOW IS ANTICIPATED FROM UPLAND AREAS. SEE DETAILS 5/11 & 6/11.

FOR END ROLL OVERLAP, SEE DETAIL 2/11

BLANKET TO EXTEND A MINIMUM OF 3'-0" BEYOND TOE OF SLOPE FOR BOTTOM OF SLOPE TERMINATION, SEE DETAIL 3/11

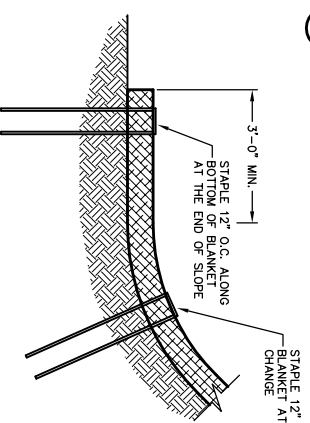
SLOPE DETAIL
NO SCALE



END SEAM OF BLANKETS OVERLAP 2'-4" PLACE STAPLES, ONE ON EACH CORNER OF BLANKET, 12" O.C. ALONG BLANKET THROUGH BOTH BLANKETS. UPSLOPE BLANKET LAPS OVER DOWNSLOPE BLANKETS IN A SHINGLE AFFECT.

END ROLL OVERLAP
NO SCALE

2
11



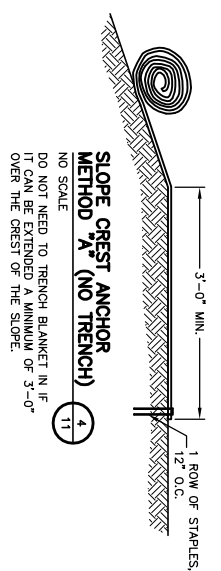
STAPLE 12" O.C. ALONG BLANKET AT SLOPE CHANGE

STAPLE 12" O.C. ALONG BLANKET AT THE END OF SLOPE

3'-0" MIN.

BOTTOM OF SLOPE TERMINATION
NO SCALE

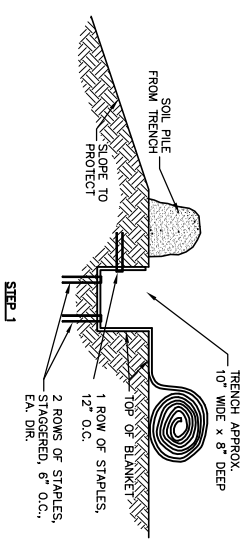
3
11



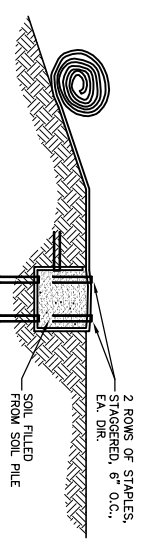
SLOPE CREST ANCHOR METHOD A (NO TRENCH)
NO SCALE

DO NOT NEED TO TRENCH BLANKET IN IF IT CAN BE EXTENDED A MINIMUM OF 3'-0" OVER THE CREST OF THE SLOPE.

4
11



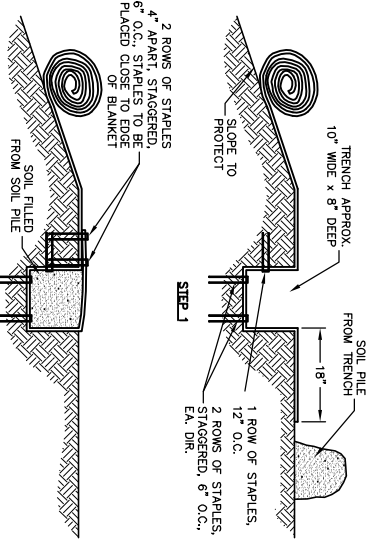
STEP 1



STEP 2

SLOPE TRENCHING METHOD B
NO SCALE

5
11



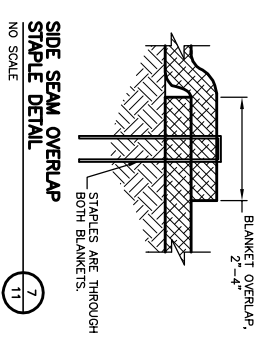
STEP 1



STEP 2

SLOPE TRENCHING METHOD C
NO SCALE

6
11



SIDE SEAM OVERLAP STAPLE DETAIL
NO SCALE

7
11

NOTES:

1. STAPLE PATTERNS ARE DEPENDENT ON SITE CONDITIONS. SEE AEC PREMIER STRAW/COCONUT™ STAPLE PATTERN GUIDE FOR DETAILS.
2. E-STAPLER® MAY BE USED IN PLACE OF WIRE STAPLES.

NO.	REV.	DATE	REVISIONS	PROJECT MANAGER BY: APPROVED BY:	AMERICAN EXCELSIOR COMPANY ARLINGTON, TEXAS	SHEET DESCRIPTION AEC PREMIER STRAW/COCONUT™ SLOPE APPLICATION DETAIL	DATE 5/1/03 SCALE NONE	DRAWN BY: KK PROJECT NO. SHEET NO. 11
-----	------	------	-----------	----------------------------------	--	---	---------------------------	---

