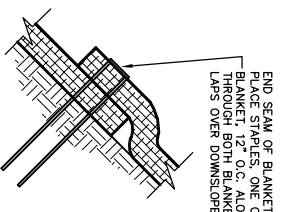


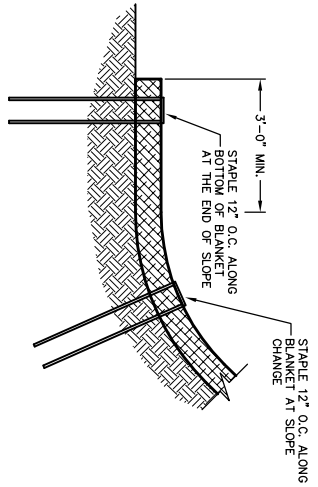
EXTEND BLANKET A MINIMUM OF 3'-0" OVER CREST OF SLOPE, SEE DETAIL 4/1. IF SOIL AVAILABLE AT THE CREST OF SLOPE OR IF OVERLAND FLOW IS ANTICIPATED FROM UP-LAND AREAS, SEE DETAILS 5/1 & 6/1

SLOPE DETAIL
NO SCALE

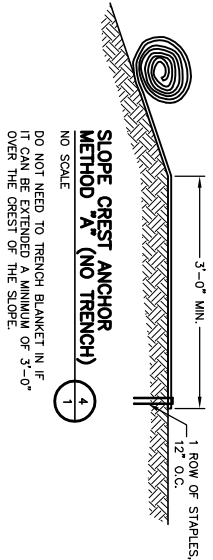


END SEAM OF BLANKETS OVERLAP 2'-4" BLANKET, 12" O.C. ALONG BLANKET THROUGH BOTH BLANKETS. UPSLOPE BLANKET LAYS OVER DOWNSLOPE BLANKETS IN A SHINGLE AFFECT.

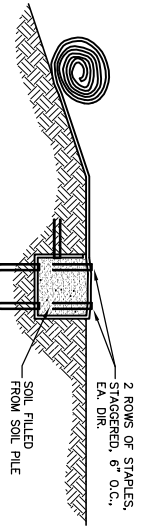
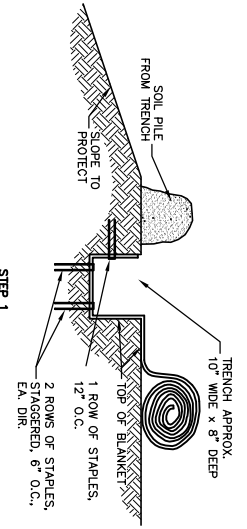
END ROLL OVERLAP
NO SCALE



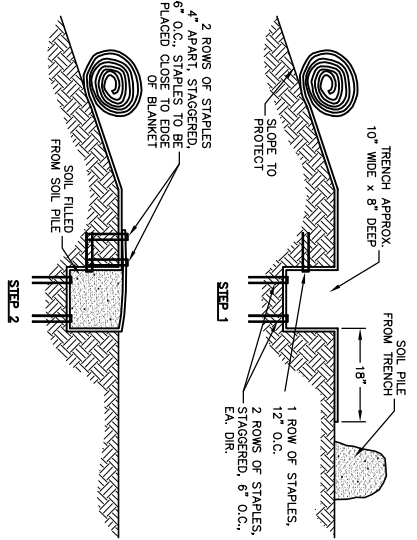
BOTTOM OF SLOPE TERMINATION
NO SCALE



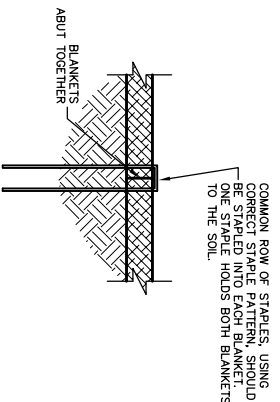
SLOPE CREST ANCHOR METHOD A (NO TRENCH)
NO SCALE



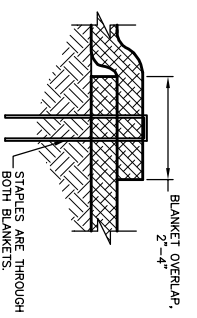
SLOPE TRENCHING METHOD B
NO SCALE



SLOPE TRENCHING METHOD C
NO SCALE



SIDE SEAM ABUT STAPLE DETAIL
NO SCALE



SIDE SEAM OVERLAP STAPLE DETAIL
NO SCALE

NOTES:
1. STAPLE PATTERNS ARE DEPENDENT ON SITE CONDITIONS. SEE CURLEXP® STAPLE PATTERN GUIDE FOR DETAILS.
2. E-STAPLER® MAY BE USED IN PLACE OF WIRE STAPLES.

NO.	REV.	DATE	REVISIONS	PROJECT MANAGER BY: APPROVED BY:	PROJECT DESCRIPTION CURLEXP® SLOPE APPLICATION DETAIL	DATE 1/7/03	DRAWN BY:	SHEET NO. 1
					AMERICAN EXCELSIOR COMPANY ARLINGTON, TEXAS	SCALE NONE	PROJECT NO.	

