

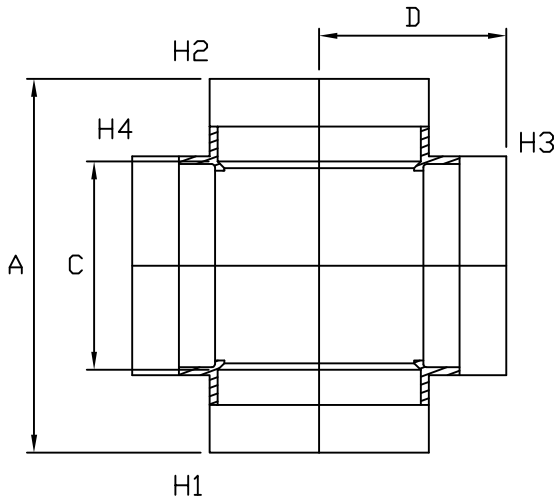


MULTI FITTINGS

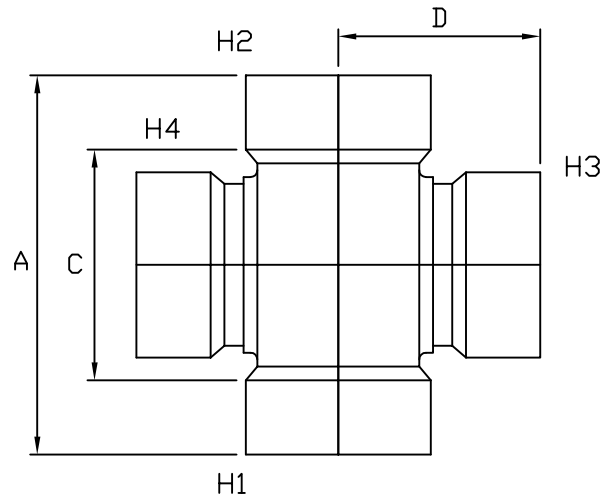
LAYING LENGTH

ISSUE DATE: MAY 10/05
SUPERCEDES: JAN 19/01

CROSS TEE (HxHxHxH)



INJECTION MOLDED FITTING (M)



FABRICATED FITTING (F)

	SIZE H1xH2xH3xH4	PART NUMBER	REFERENCE NUMBER	A REF	C REF	D REF	
M	3x3x3x3	040975	-	6.750	3.750	3.375	056
M	4x4x4x4	040976	282848	8.000	4.500	4.000	056
-	6x6x6x6	040915	-	-	-	-	P
-	8x8x8x8	040828	-	-	-	-	P
-	12x12x12x12	040010	-	-	-	-	P