



Better science. Better vegetation.



PROVEN TECHNOLOGIES FOR EVERY SITE
Faster germination • Less soil loss

The Erosion Control Innovator CONTINUES TO LEAD

Terra-Mulch® has always been known for hydraulic mulches that incorporate innovative components to more effectively:

- Stabilize soil
- Promote more complete seed germination
- Encourage more rapid plant establishment

Terra-Mulch hydraulic mulch products are among the most imitated on the market. That's because Terra-Mulch has introduced more performance-enhancing features than any other mulch brand. But copies just can't match the original—**Terra-Mulch**.



As the world leader in hydraulic mulch production, Profile Products utilizes advanced processing techniques and stringent quality control standards to assure consistent performance. Terra-Mulch products are a result of this industry-leading approach to quality and lasting satisfaction.

Building on innovation to ensure better results.

A legacy of constant innovation has resulted in breakthrough technologies to help make certain you're not called back to a site for reapplication. Examples include polymers and polysaccharides that add strength and water-holding capacity to the mulch matrix and the integration of a proprietary biostimulant that's proven to promote seed germination, plant growth and a stronger plant cell-wall structure. No other line of hydraulic mulch is backed by more research, evaluation and innovation than Terra-Mulch.

Better science leads to greater success, yours.

Every Terra-Mulch® product is created with expertise in what makes plants grow and unequalled experience in what makes you successful. 100% Thermally Refined® wood fibers are a prime example.



THERMALLY REFINED WOOD FIBER

Terra-Mulch Thermally Refined wood fiber holds 13.5 times its weight in water and improves yield. Maximum water-holding capacity is essential for successful seed germination and plant establishment. Maximum yield is a big help to your bottom line.



Fiber magnified 45 times by independent lab specializing in fiber analysis.

ATMOSPHERICALLY REFINED WOOD FIBER

Some competitors use atmospherically refined wood fiber that results in lower water-holding capacity and lower yields. No wonder it takes so many extra bales of their mulch to equal the performance of Terra-Mulch.

Superior fibers assure better performance.

Terra-Mulch products offer better vegetation establishment by utilizing a Thermally Refined wood process that combines high heat and pressure to create long and highly absorbent fibers. When integrated into a matrix these fibers provide outstanding on-site advantages.

Better Yield: Thermally Refined fiber mulch delivers up to 30% more yield than competitive products. Seven bags of Terra-Mulch provides as much yield as 10 bags of competitive mulch.

Better Coverage: Thermally Refined fiber mulch provides superior coverage with greater loft, resulting in greater erosion protection and water-holding potential to support more complete germination and faster vegetation establishment. The larger volume of fiber more effectively reduces soil surface evaporation.

Faster Germination and Establishment: Thermally Refined wood fiber mulch has significantly more water-holding capacity to enhance more rapid vegetative establishment.

Greater Productivity: Thermally Refined wood fiber mulch mixes more completely and shoots more smoothly so you'll get more done in less time. Clogs that often occur when applying competitive mulches are significantly reduced.

Better for the Environment: Terra-Mulch products are made with 100% recycled wood and paper fibers. They are 100% biodegradable, leave no nets or threads and are non-toxic to fish and wildlife.

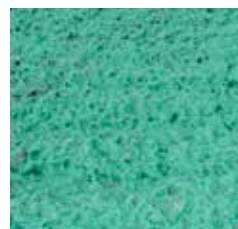


Thermally Refined
Wood Fibers



Atmospherically Refined
Wood Fibers

The photos above illustrate the 30% yield advantage of Terra-Mulch fibers—both bowls contain 14 grams.



Terra-Mulch



Other Mulches

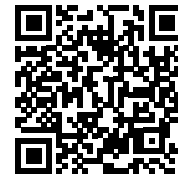
Compared to the same amount of other mulches, applied at the same rate, Terra-Mulch (left) provides better coverage with greater loft.



Why Thermally Refined® Wood Fibers ARE BETTER.

Yield and Coverage

Better Coverage and Loft: The increased volume of Thermally Refined® wood fibers provides better soil surface coverage and loft for outstanding erosion control, seed germination and plant establishment.



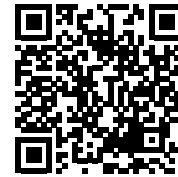
Scan to see video now

Visit www.profilevs.com/yield to view side-by-side yield and coverage comparisons between Thermally Refined wood fibers and competitive fibers.

Water-Holding Capacity

Better Water Absorption:

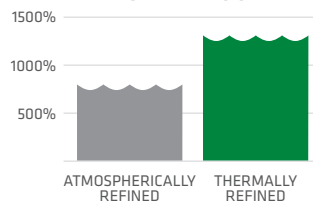
Thermally Refined wood fibers more readily absorb water to create a more uniform slurry that stays in suspension longer, resulting in fewer clogs, better shooting distance and more consistent coverage. Moreover, the ability of the engineered fibers to continually re-absorb and hold more water, greatly enhances seed germination and vegetation establishment.



Scan to see video now

Visit www.profilevs.com/capacity to see why the water-holding capacity of Thermally Refined wood fibers is so much greater than competitive fibers.

WATER-HOLDING COMPARISON
TYPICAL ANALYSIS



The graph to the left shows that Thermally Refined wood fiber holds 13.5 times its weight in water. Atmospherically refined wood fiber has up to 1/3 less water-holding capacity.

Better Products, Better Results, WHATEVER THE JOB.

Terra-Mulch® products are ideal for a variety of applications, including vegetation establishment, landfills, highways, residential and commercial construction sites, reclamation projects, airports and recreation areas. Each product has undergone thorough evaluation and testing, and all can be customized to provide the best solution.



ROADSIDES: Terra-Mulch products are particularly effective for DOT and other transportation projects coast to coast.



GOLF COURSES: Terra-Mulch products deliver cost-effective turf establishment in high profile, fine turf environments.



SLOPES: The outstanding erosion control performance delivered by Terra-Mulch wood fiber hydraulic mulch products is widely recognized as a better way to establish vegetation.



CONSTRUCTION: Residential and commercial construction sites are good examples of how Terra-Mulch products are utilized to solve a variety of on-site challenges.

Cellulose



Terra-Mulch® Cellulose

Provides erosion control that is superior to straw for nearly the same cost. It is ideal for general seeding. An exclusive defibration process and advanced manufacturing improves water-holding capacity.

- Dyed dark green for easy metering.
- Shoots well—allows machinery to run efficiently while providing excellent ground coverage.
- High-quality, clean 100% recycled cellulose fiber mixes in water at an accelerated rate.
- Stays in suspension for more uniform consistency.
- Less percentage of fines greatly reduces mâché effect.
- Meets or exceeds all requirements for wood cellulose fiber mulch.
- Available in 50-lb (22.7 kg) bags.



Terra-Mulch® Cellulose with Tacking Agent 3®

Superior erosion control to straw for nearly the same cost and looks better with a darker, richer color than competing brands. Additionally it shoots well and mixes in water at an accelerated rate—all this and the added benefit of tack for extra holding power.

- Comes pre-blended with Tacking Agent 3 to increase protection from seed-washout and erosion.
- Tacking Agent 3 is a blend of polymers and polysaccharide.
- Eliminates the extra step and mess of field-mixing tackifier.
- Meets or exceeds all requirements for wood cellulose fiber mulch.
- Available in 50-lb (22.7 kg) bags.

Blends



Terra-Blend™ With UltraGro™

Combines 100% recycled Thermally Refined® wood fiber with the highest quality cellulose in the industry to deliver up to 15% greater yield vs. competitive blend products and covers up to 20% more ground than cellulose.

- The ultimate in blend performance.
- UltraGro is a proprietary biostimulant to ensure healthy vegetation growth even in harsh environments.
- Meets or exceeds all requirements for wood and paper fiber mulch.
- Available in 50-lb (22.7 kg) bags.



Terra-Blend™ with Tacking Agent 3®

Combines Thermally Refined wood fiber with high quality cellulose, and is pre-blended with Tacking Agent 3. Enhanced water-holding capacity of the refined fibers provides better germination, fewer washouts and reduced callbacks.

- Tacking Agent 3 is a three-dimensional blend of polymers and polysaccharide, proven to reduce soil erosion and water runoff immediately after hydroseeding.
- Flexibility of blended fiber combined with tackifier allows equipment to run efficiently and for more extensive hose work without clogs.
- Non-toxic and environmentally safe.
- Meets or exceeds all requirements for wood fiber mulch.
- Available in 50-lb (22.7 kg) bags.



Wood



Terra-Wood™

An ideal choice for more challenging sites, and delivers up to 30% more yield—which means more money in your pocket.

- Contains 100% of the highest quality recycled wood fiber.
- Thermally Refined wood fiber delivers up to 50% more water-holding capacity than atmospherically refined wood mulches.



Terra-Wood™ with Tacking Agent 3®

Ideal for general seeding on critical sites. Tacking Agent 3 adds increased binding capabilities.

- 100% wood fiber just like Terra-Wood, but with the industry's leading tackifier, Tacking Agent 3.
- Tacking Agent 3 is a blend of polymers and polysaccharide.
- Eliminates the extra step and mess of field-mixing tackifier.



Terra-Wood™ with UltraGro™

The same advanced product components and performance characteristics as Terra-Wood; however, also includes UltraGro, a proprietary biostimulant to ensure healthy growth even in harsh environments.

All available in 50-lb (22.7 kg) bags.

PRODUCT APPLICATION OVERVIEW

Product	Application	Slope	Application Rate lb/acre (kg/ha)	Erosion Control Effectiveness (%) ¹	Continuous Max Slope Length ²
Terra-Mulch Terra-Wood with Tacking Agent 3	Erosion Control	≤2H:1V	3,000 (3,360)	53	30 ft (9.1 m)
		≤3H:1V	2,500 (2,800)		
		≤4H:1V	2,000 (2,240)		
Terra-Mulch Terra-Wood with UltraGro	Erosion Control	≤2H:1V	3,000 (3,360)	45	28 ft (8.5 m)
		≤3H:1V	2,500 (2,800)		
		≤4H:1V	2,000 (2,240)		
Terra-Mulch Terra-Wood	General Seeding	≤2H:1V	3,000 (3,360)	45	28 ft (8.5 m)
		≤3H:1V	2,500 (2,800)		
		≤4H:1V	2,000 (2,240)		
Terra-Mulch Terra-Blend with Tacking Agent 3	General Seeding	≤3H:1V	2,500 (2,800)	42	25 ft (7.6 m)
		≤4H:1V	2,000 (2,240)		
Terra-Mulch Terra-Blend with UltraGro	General Seeding	≤3H:1V	2,500 (2,800)	35	23 ft (7.0 m)
		≤4H:1V	2,000 (2,240)		
Terra-Mulch Cellulose with Tacking Agent 3	General Seeding	≤4H:1V	2,000 (2,240)	32	20 ft (6.1 m)
Terra-Mulch Cellulose	General Seeding, Reclamation, Straw Tacking	≤4H:1V	2,000 (2,240)	25	18 ft (5.5 m)

¹% Effectiveness = One minus Cover Factor multiplied by 100%. Large scale testing conducted at Utah Water Research Laboratory.

For specific testing information please contact a Profile technical service representative at 800-508-8681. ²

Without slope interruption devices. Maximum slope length is based on a 4H:1V slope. For applications on steeper slopes, the maximum slope length may need to be reduced based on actual site conditions.

Soil Test Before Selecting the RIGHT MULCH FOR THE JOB.

Each Terra-Mulch® hydraulic product has properties and performance characteristics that are best suited for different sites, and can be customized to meet specific project requirements. However, the quality of the soil these mulches cover is critical to the project's success. To ensure the mulches you choose produce the best results, you need a soil analysis. To assist you with that, Terra-Mulch offers a free soil test. To get your free test, www.profilevs.com/free-soil-test.

Use ProPlus® additives for successful projects.

Based on the results of your soil test, ProPlus additives can help modify a soil's chemistry to create the best environment for rapid establishment and vegetative growth. ProPlus accessories offer the most comprehensive line of hydraulic mulch additives to improve soil fertility and structure to assure effective on-site results.

IMPROVE THE SOIL

Prescriptive Agronomic Formulations such as NeutraLime™, Aqua-pHix™, BioPrime™ and JumpStart™ help correct deficiencies indicated through soil testing, so seeds germinate more quickly and more completely, and plants develop deeper roots for more sustainable results.

IMPROVE THE SLURRY

Fiber mulch additives including FiberLock™, FiberBond Ultra™ and SlikColor™ improve application efficiencies by making hydraulic slurries shoot farther and spread more evenly.

IMPROVE THE PERFORMANCE

Tackifiers, moisture management and dust control formulas that give you greater bond strength and water absorption include Tacking Agent 3®, FloccLoc™ and AquaGel™.

► For more detailed information, consult with your Terra-Mulch representative, local distributor, or visit www.terra-mulch.com.


ProPlus®





BETTER SCIENCE. BETTER VEGETATION.

www.terra-mulch.com

TOLL FREE 800-508-8681

Two trusted names, ONE INDUSTRY-LEADING COMBINATION

The bag says Terra-Mulch®. What's inside was developed and manufactured by Profile Products, the world's largest manufacturer of hydraulic mulches. Profile® is widely recognized for developing innovative product solutions that deliver superior erosion control through faster and more complete vegetative establishment.



**GREEN DESIGN
ENGINEERING™**
EARTH-FRIENDLY SOLUTIONS
FOR SUSTAINABLE RESULTS™

Green Design Engineering™ is a holistic approach that combines agronomic and engineering expertise with advanced technologies to provide cost-effective and earth-friendly solutions. Profile strives to deliver Green Design Engineering across our team of consulting professionals, innovative products and educational resources.



PS³ is a free, comprehensive 24/7 online resource you can use to design a project and select the right products that address both the physical and agronomic needs of your site. It will help you develop holistic, sustainable solutions

for cost-effective erosion control, vegetation establishment and subsequent reductions in sediment and other pollutants from leaving disturbed sites. Because good plans start with the soil, PS³ offers free soil testing to ensure this critical step is considered.

To access the site, design your project and take advantage of a free soil analysis, visit www.profileps3.com.



Solutions for your Environment™

PROFILE Products LLC
750 Lake Cook Road, Suite 440
Buffalo Grove, IL 60089

Profile, Terra-Mulch, Thermally Refined, ProPlus and Tacking Agent 3 are registered trademarks of PROFILE Products LLC.

Green Design Engineering, Terra-Wood, Terra-Blend, UltraGro, NeutraLime, Aqua-pHix, BioPrime, JumpStart, FiberLock, FiberBond Ultra, SlikColor, FlocLoc, AquaGel, Earth-Friendly Solutions for Sustainable Results and Solutions for your Environment are trademarks of PROFILE Products LLC.

© 2014 PROFILE Products LLC. All rights reserved.



TM-12 01/14