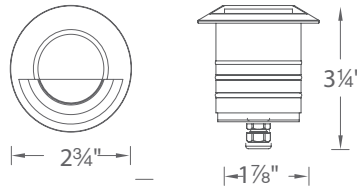


2" INGROUND - CIRCLE STEP LIGHT

2041

WAC

LANDSCAPE LIGHTING



Fixture Type:

Catalog Number:

Project:

Location:

PRODUCT DESCRIPTION

Landscape 2" recessed luminaire for step and wall light applications.

FEATURES

- IP68 rated, Suitable for continuous immersion under water
- Factory sealed water tight fixtures
- Solid stainless steel construction
- Stainless steel spring clip allows wall or step light applications
- Spring clip, 6' lead wire and direct burial gel filled wire nuts included
- Maintains constant lumen output against voltage drop
- UL 1838 Listed

SPECIFICATIONS

Input: 9 - 15VAC (Transformer is required)
Power: 4.1W / 6.6VA
Brightness: 50 lm
CRI: 85
Rated Life: 70,000 hours

ORDERING NUMBER

		Color Temp	Finish
2041	<i>Circle Step</i>	27 2700K	BS <i>Bronzed Stainless Steel</i>
		30 3000K	SS <i>Stainless Steel</i>

2041-30_____

Example: **2041-30SS**

wacighting.com
Phone (800) 526.2588
Fax (800) 526.2585

Headquarters/Eastern Distribution Center
44 Harbor Park Drive
Port Washington, NY 11050

Central Distribution Center
1600 Distribution Ct
Lithia Springs, GA 30122

Western Distribution Center
1750 Archibald Avenue
Ontario, CA 91760

2" INGROUND - CIRCLE STEP LIGHT

2041

WAC
LANDSCAPE LIGHTING

Magnetic Transformers

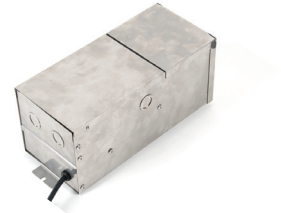
Stainless Steel, 12-15V output, IP65 rated, UL 1838 listed
See transformer spec sheet for details and its accessories

9075-TRN-SS
75W Max

9150-TRN-SS
150W Max

9300-TRN-SS
300W Max

9600-TRN-SS
600W Max



TESTED MAGNETIC LOW VOLTAGE (MLV) DIMMERS

Luminaire	Dimmer					
	Manufacturer	Family	Model	Power Rating	Range*	Note
2041	Lutron	Diva	DVLV-600	600W	20% - 100%	
		Skylark	SLV-600P	600W	15% - 100%	Best performance
		Skylark	S-10P	1000W		Not recommended

*Low end of this range is determined by output current which may not directly translate to the perceived light output

WAC Lighting fixtures are compatible with a variety of dimmers. For your convenience we have included a compatibility chart showing dimmers which have been tested with our products. The recommended list below is based upon testing conducted in a lab, and the results can vary in certain field applications due to a number of factors. Exclusion from the list does not imply incompatibility, just that it has not been tested by WAC Lighting. Please reference the dimmer manufacturer's instructions for installation, or contact a WAC lighting professional at 800-526-2588.

wacighting.com
Phone (800) 526.2588
Fax (800) 526.2585

Headquarters/Eastern Distribution Center
44 Harbor Park Drive
Port Washington, NY 11050

Central Distribution Center
1600 Distribution Ct
Lithia Springs, GA 30122

Western Distribution Center
1750 Archibald Avenue
Ontario, CA 91760