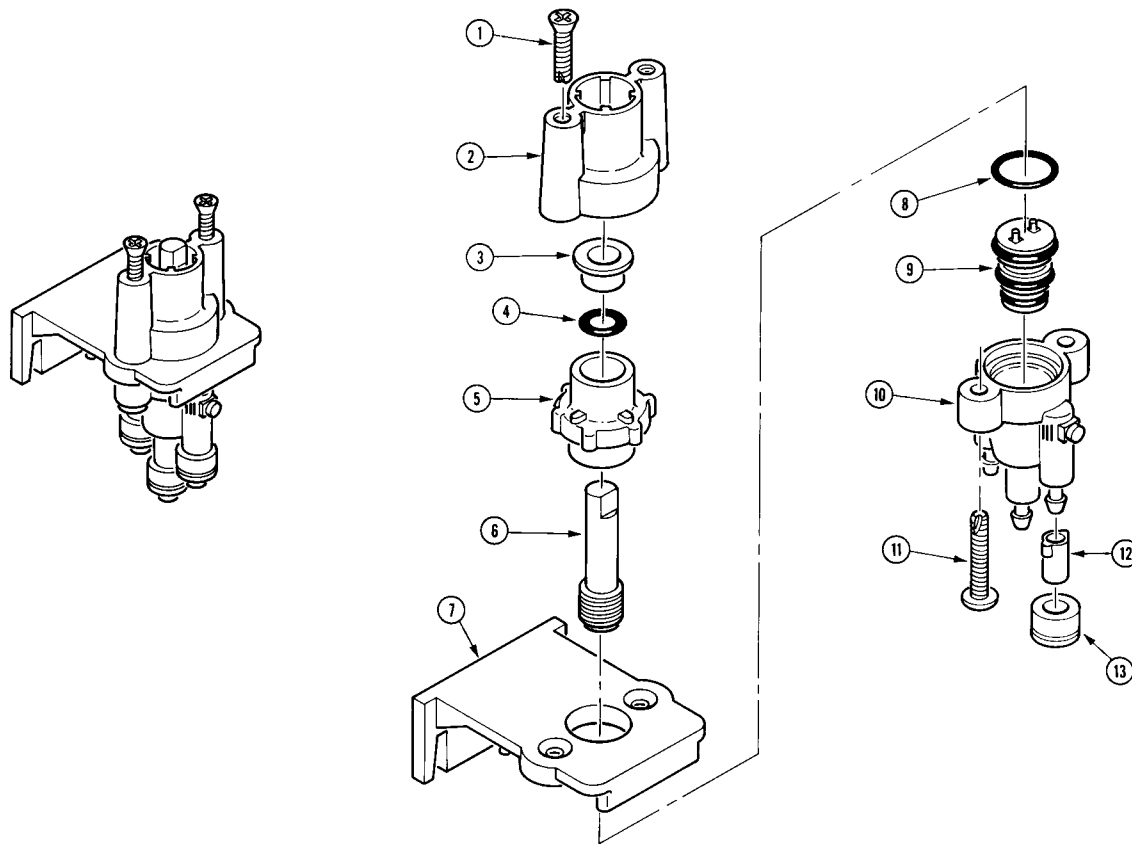


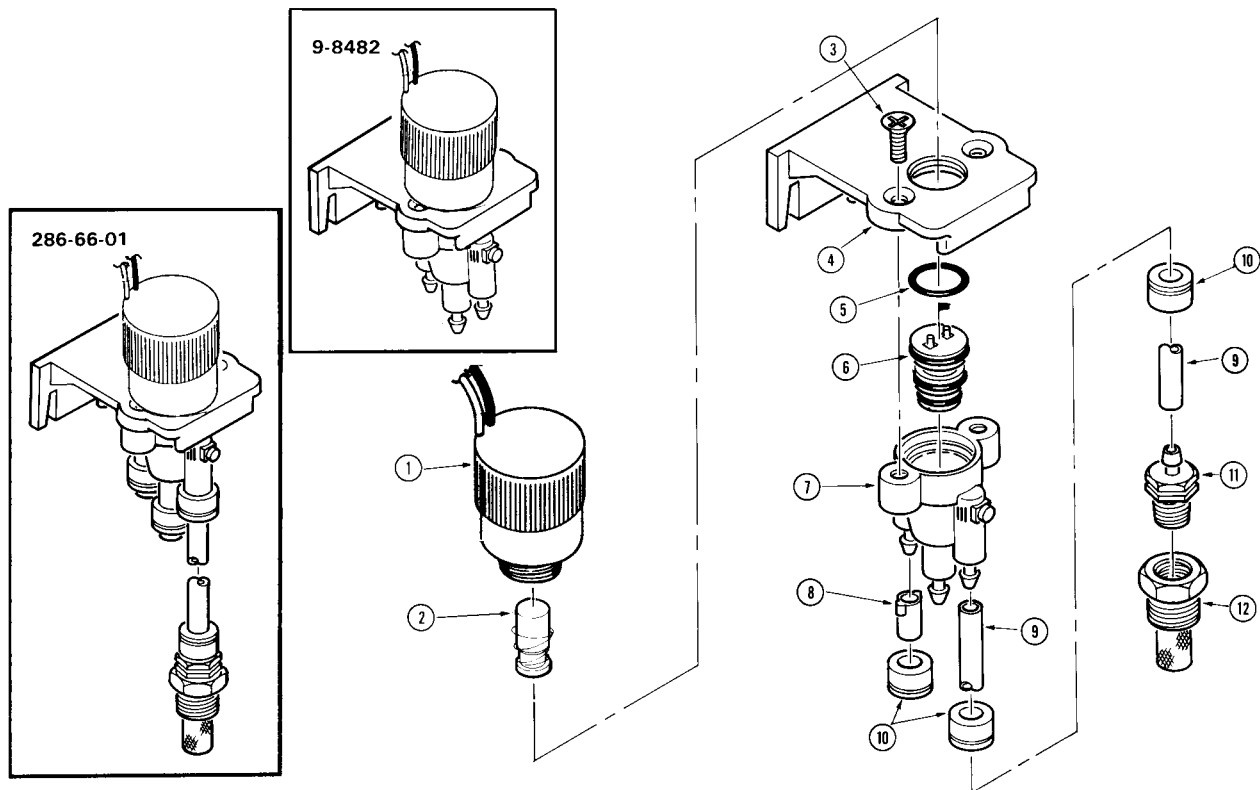
Manual Actuator



Item No.	Part No.	Description	Quantity Per Assy.
1	-----	Screw, Tap, #8	2
2	-----	Adapter (Includes Item 3)	1
3	-----	Retainer, O-Ring	1
4	2-9652	O-Ring, 7/16" x 5/8"	1
5	-----	Cap	1
6	-----	Stem, Control	1
7	-----	Bracket, Mounting	1
8	360-0220	O-Ring, 0.070" x 0.551" x 0.691"	1
9	102-5599	Actuator Assy.	1
10	35-0992	Body Assy., Pilot Valve	1
11	-----	Screw, Tap, #8	2
12	89-8157	Cap, Poly	3
13	*900-40	Retainer, Tube	3

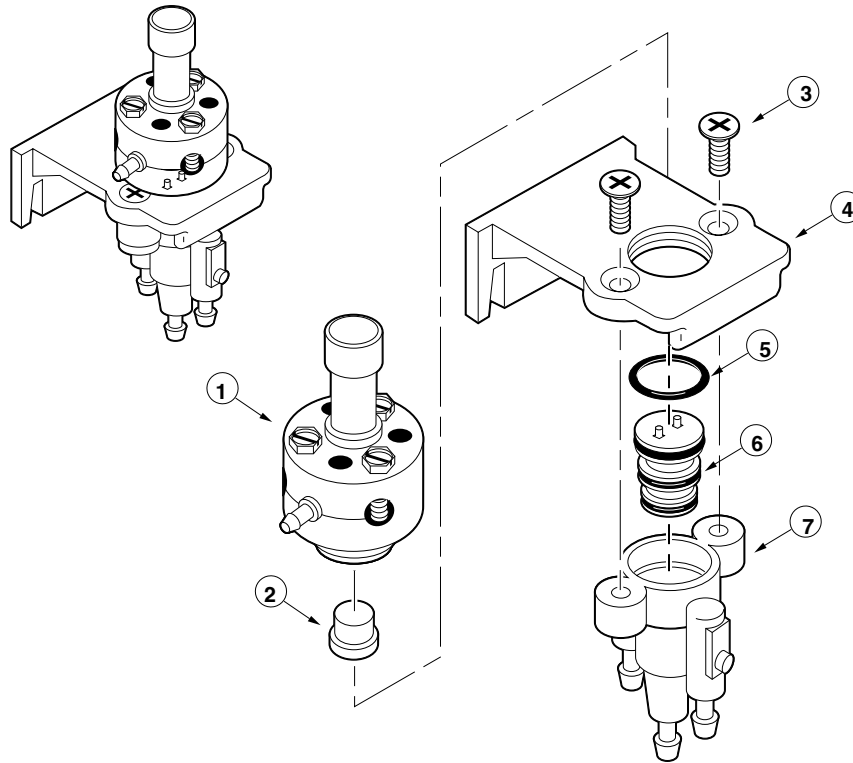
* Order Through Finished Goods Distribution System—Minneapolis

3-Way Actuator



Item No.	Part No.	Description	Quantity Per Assy.
1	89-1673	Solenoid Assy.	1
2	35-4717	Plunger Assy.	1
3	-----	Screw, Machine, 10-24 x 1/2"	2
4	-----	Bracket, Mounting	1
5	360-0220	O-Ring, 0.070" x 0.551" x 0.691"	1
6	102-5599	Actuator Assy.	1
7	35-0992	Body Assy., Pilot Valve (Used with 286-66-01)	1
7	35-7153	Body Assy., Pilot Valve (Used with 9-8482)	1
8	89-8157	Cap, Poly (Used with 286-66-01)	1
9	9-1482	Tube, 1/4" x 36" (Used with 286-66-01)	1
10	*900-40	Retainer, Tube (Used with 286-66-01)	3
11	89-8157	Adapter, Poly (Used with 286-66-01)	1
12	995-14	Fitting, Screen, Supply (Used with 286-66-01)	1
		SERVICE ITEMS	
	35-4603	Kit, Service Assy. (Includes Items 3-7) (Used with 286-66-01)	
	35-4602	Kit, Service Assy. (Includes Items 3-7) (Used with 9-8482)	
* Order Through Finished Goods Distribution System—Minneapolis			

3-Way Actuator, Normally Closed



Item No.	Part No.	Description	Quantity Per Assy.
1	89-6005	Adapter, Pilot Valve, NC	1
2	-----	Shuttle	1
3	-----	Screw, Machine, 10-24 x 1/2"	2
4	-----	Bracket, Mounting	1
5	360-0220	O-Ring, 0.070" x 0.551" x 0.691"	1
6	102-5599	Actuator Assembly (Includes O-Rings)	1
7	35-7153	Body Assy., Pilot Valve	1
		SERVICE ITEMS	
	35-4603	Kit, Service Assy. (Includes Items 3–8)	