

The FMC logo is in red, featuring a stylized plus sign followed by the letters 'FMC'.

# FMC



# Fame<sup>TM</sup>

When your ornamentals are in the spotlight,  
*Fame is for you.*

- Fast penetration into leaf tissues and rainfast within 15 minutes
- Rapid foliar and root uptake with xylem and translaminar movement
- Protection against shoot, stem and soil-borne diseases, including powdery mildews, rusts, flower blights, leaf blights and spots

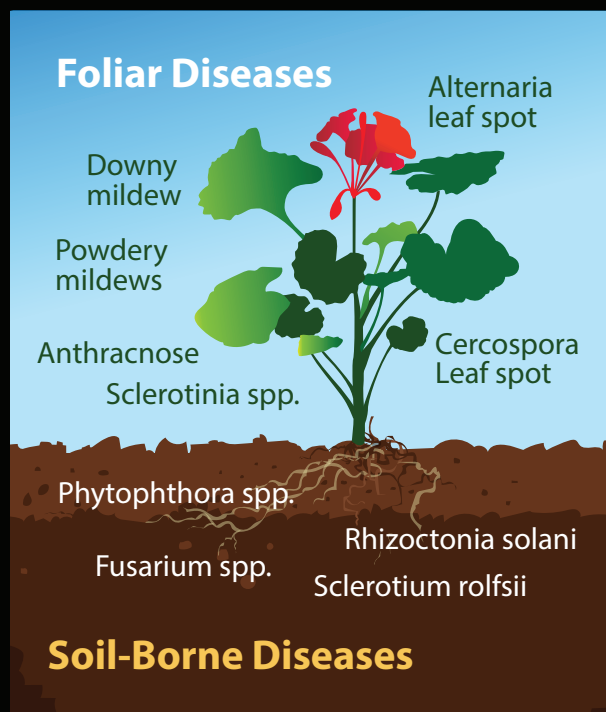
GROUP II FUNGICIDE

GROUP II 3 FUNGICIDE



# Fluoxastrobin Action is in the Spotlight

## Broad Spectrum Disease Control for Ornamental Care



### FAME Benefits\*

	Fluoxastrobin	Azoxystrobin	Trifloxystrobin
Foliar Uptake	✓	✓	X
Root Uptake	✓	✓	X
Translaminar Mobile	✓	✓	low
Rainfastness	15 mins.	4 hr.	1 hr.
Xylem Mobile	✓	✓	X
Ornamental Granule Formulation	✓	X	X
Preventative Control	✓	✓	✓

### Plants that have shown to be tolerant to Fame

African Violet	Dahlia	Lantana	Rose
Ageratum	Dianthus	Lobelia	Scavola
Angelonia	Dogwood	Lupine	Snapdragon
Argyranthemum	Geranium	Monarda	Torenia
Bacopa	Gerbera Daisy	Nemesia	Verbena
Begonia	Hollyhock	Nemeslax	Zinnia
Calibrachoa	Impatiens, New	Osteospermum	
Chrysanthemum	Guinea	Penta	
Coleus	Impatiens, Walleriana	Petunia	

### Fame Offers Value in Strength

- Up to 28 days preventative control at the high rate<sup>1</sup>
- Fluoxastrobin has systemic action through xylem and translaminar movement to deliver thorough, fast-acting disease protection and resist further growth of established fungi

<sup>1</sup>Under severe disease conditions more frequent applications may be needed.



- Foliar spray or soil drench applications
- Premium strobilurin protection at a competitive cost per 100 gal.
- Available in 16 fl. oz. tip 'n' measure bottle for convenience or 64 fl. oz. jug
- Rate: 1.0-8.0 fl. oz. (spray) or 0.15-0.6 fl. oz. (soil drench) per 100 gal.



- Surface application on growing media OR soil-incorporation for preventative foliar disease control
- Economically priced premium strobilurin for foliar, root and stem disease control
- Excellent uptake and movement within plant for thorough disease protection
- Rate: 3.5-4.6 lbs. per 1,000 sq. ft. (surface application) or 0.67 oz. per cu. ft. (soil incorporation)



- Optimized resistance management with dual modes of action (FRAC 11 and 3)
- Broad spectrum protection from both root and shoot diseases including leaf blights/spots (i.e. web blight, downy mildew, rusts), flower blights (anthracnose, botrytis blight) and shoot/stem diseases (aerial/shoot blight)
- Rate: 1-8 fl. oz. per 100 gal.



@FMCturf



FMCTurf

fmcprosolutions.com  
fmc turfwire.com

#### \*Sources:

- 1) W. Barlett, D. et al. (2001). Understanding the Strobilurin Fungicides. The Royal Society of Chemistry, Pesticide Outlook—August 2001, p143-148.
- 2) Labels of Compass 50WG, Heritage 50WG and Heritage TL. Collected from manufacturers' website in August, 2015.