

## Accent & Path Lights

*Our best selling Nightscaping products stocked & recommended by Reinders. For a full Nightscaping catalog & pricing, please call or visit your nearest Reinders location.*



**GU-0404CU-NL COVERLITER**

**Max Lamp: 50W MR16**

Our most popular Nightscaping uplight. Durable copper and brass construction. Stocked with a stake and without a lamp.



**GU-6503BR-NL LIPINSKILITER**

**Max Lamp: 50W MR16**

Solid brass construction with natural raw look. Hood is secured by a simple O-ring design. Stocked with a stake and without a lamp.



**BM-2961-NL OKEEFELITER**

**Max Lamp: 50W MR16**

A more formal version of the Lipinski with built in louvers and twist locking hood. Solid brass. Stocked with a stake and without a lamp.



**GU-0403CU-LOX1433 SOFTLITER**

**Max Lamp: 18W T5 WEDGE BASE**

A wonderful fixture for evenly lighting walls. The front glass is frosted which allows even wash lighting. Solid brass & copper. Stocked with a stake and a lamp.



**GU-0508-NL WALLITER**

**Max Lamp: 50W PAR36**

An old favorite for many designers. Par lamps provide reliable, warm light and don't generate the heat of an MR16 lamp. Stocked without a lamp.



**GD-1409-1 FOOTLITER**

**Max Lamp: 12W SC BAYONET**

Low voltage lighting's original and most copied pathlight. Simple design with even light. Stainless Steel. Stocked with a stake and a lamp.



**GD-2612CU ILLUMINATOR**

**Max Lamp: 21W SC BAYONET**

The big brother of the Footlitter. Simple design with even light. Stainless Steel. Stocked with a stake and a lamp.



**WM-3535 POSTLITER**

**Max Lamp: 12W T5 WEDGE BASE**

An all aluminum deck light is, as its name suggests, perfect for mounting on deck posts. Available in copper as well. Stocked with a lamp.



**WM-0503-1 NICHELITER**

**Max Lamp: 12W DOUBLE END**

Mounts in stair kickers of decks to provide safety lighting. Available with copper faceplate. Stocked with a lamp.

*Nightscaping has been building transformers for 50 years. Their stainless steel modular PowerCenters® are the heart of their lighting systems. With a range of voltages from 100W to 1000W, the multi-tap H30 series, and dozens of control options, the UL1838 compliant Nightscaping PowerCenter® is the perfect tool for your next lighting project.*



**Control Options**



**MANUAL CONTROL (SS):** The Powercenter™ can be used as a standard manual control external on-off powercenter without a modular control component.

**ANALOG TIMER (AT):** Automatic control with a mechanical timer.

**ANALOG TIMER WITH PHOTOCELL (AP):** Automatic control with a mechanical timer. Photocell insures lights only run when it is dark.

**DIGITAL TIMER (DT):** Automatic control with digital display. Has multiple programming cycle options. Lights can be programmed to go on and off at different times on different days, confusing would be intruders.

**DIGITAL TIMER WITH PHOTOCELL (DP):** Digital timing functions with photocell control, insuring lights only run when it is dark.

**ISLANDER 12V RELAY (12V):** Control multiple Powercenters™ with a single module to insure simultaneous on and off times in different zones of your lighting design.

**PHOTOCELL (PC):** Photocell only configuration allows dusk to dawn control.

**X-10 (XO):** Remote control of Powercenters™ as a group or individually.

**SPRINKLER CONTROL (SC):** Allows transformer to be controlled from an open zone of sprinkler timer.

**Control Pro - T-SS-PS:** The Digital Power Switch operates from a solar calendar specific to your local area.



*Nightscaping products are proudly made in the United States!*



## The MasonLiter

Make Your Wall and Stair Projects Safe To Use At Night

The Masonliter allows you to easily illuminate dark steps, walls, and walkways, and is quick and easy to install during the construction process. The Masonliter allows you to increase the profit margin on your installations with very little additional labor. The fixtures can be mounted under stair treads, under seatwall caps, or used to illuminate any masonry wall system by simply installing between masonry layers. The backing on the fixture minimizes light glare on the wall while the front is flared to throw the light and maximize coverage. The unique design projects light downward in a grazing fashion that brings out colors and textures while simultaneously illuminating the ground.

Easy to use even for the novice, the MasonLiter system can be put together quickly using Ace Connectors (shrink-wrap watertight connectors) and a simple and very safe Powercenter™ unit with a LIFETIME warranty.

Please see backside of this circular for detailed specifications and easy to follow installation instructions. Ask your distributor about the Nightscaping® Postliter and the pillar-top St. Claireliter to complete your project.

### Material:

Copper, Stainless Steel or Brass

### Lamp:

LOx1419 (standard)  
5 watts, T-5 xenon wedge base  
Also available in 11.5 and 18 watt xenons

### Mounting:

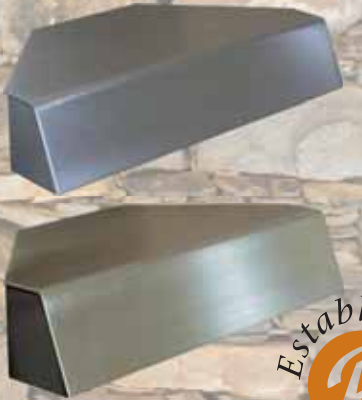
Fixture wing fits between pieces of mason, to be grouted in place (most convenient when installed with hardscape)

### Lead Wire:

5' lead wire (standard)  
Available in longer lengths when specified

### Finishes:

Black, Weathered Iron, Native Green, Tan, Bronze, Sandstone, Earthtone, White, Antique Verde, Verde Paint, Copper Verde  
(Optional Powdercoating at additional charge)



Established  
in 1866

## Nightscaping's® New Fixture Introduction...

The Nightscaping® Apprentice was recently designed to fill a gap in our product line following many requests by contractors and specifiers. The new uplight comes standard with a louver, MR-16 lamp, adjustable knuckle, adjustable eyebrow, and most importantly you can change the lamp without any tools. This fixture is light weight, durable, sleek and unique.



The  
Apprentice



### Fixture Specifications

**Material:** Aluminum

**Lamp:** MR-16 halogen, 20 watts 36° beam spread

**Louwer:** Standard

**Mounting:** Spike mounted

**Standard Finishes:** Black, Weathered Iron

**Optional Finishes:** Native Green, Tan, Bronze, Sandstone, Earthtone, White, Antique Verde, Verde Paint, Copper Verde

## JEM-Liter

20 years of patient experimentation and listening to our contractors has resulted in the introduction of this new downlighting fixture. The WM-0207CU JEM-Liter offers a visually sleek and refined profile. The true measure of this fixture however is in the details.



- Two silicone o-rings in machined brass base to assure watertightness
- Socket includes a lamp retaining spring clip to insure a constant tight fit in downlighting application
- Solid brass ratcheting toothed knuckle for precise aiming
- Mounting bracket is contractor designed for easy installation, aiming and servicing. The three attachment points include one screw hole and two slotted ears
- Mounting bracket is equipped with a convenient wire release slot
- Each fixture is pre-wired with 35' of 16-2 UV inhibited stranded cable
- Risk of fire or liability is further decreased with an inline fuse
- Eyebrow is adjustable in 8 different positions, 360° around fixture, while knuckle remains in vertical position

1705 E. Colton Ave  
Redlands, CA 92374  
800.544.4840  
www.Nightscaping.com  
info@Nightscaping.com

## The perfect down light compliment to the Apprentice

Nightscaping's® Audition is their newest downlight offering designed with the same look and features of the Apprentice uplight. Now the lighting professional has two powerful tools to create breathtaking lighting scenes.



The  
Audition

### Fixture Specifications

The Audition is identical to the Apprentice but with an overlapping back cap instead of a sleeve to prevent water entry. It also is equipped with a tree/wall mount.