



Zone Control Remote offers a range of up to **500 Ft!**

Zone Control gives you total command of your landscape lighting.



FEATURES:

- 3 individual 300 watt timers allows Independent program of on/off times for up to 3 individual zones.
- Compatible with all major transformer manufacturers.
- Easily retrofit existing projects.
- Provides energy savings to homeowner by reducing light hours of operation.

Part # ZONECTRL-001

Pure Wireless Control For Landscape Lighting

Take Control

The new Zone Control[®] from Advanced Bridging Technologies provides wireless control for up to 3 individual 300 watt runs on a typical low voltage transformer.

How it works

A typical transformer powers all lights on or off using either a photocell and or timer. The unique Zone Control receiver is wired directly between each common and run creating a wireless "switch" for each run.

By providing a "virtual switch" you can now isolate individual lighting areas tied to the same transformer and allow independent programming of each lighting zone without affecting the other zones.

The Zone Control's wireless remote also allows manual on/off control of each area without changing the programmed on/off times.

Compatible with

- 300, 600, 900 & 1200 watt transformers

Optional transmitters



Wall Fob
Part # ZoneCTRL-WallTx



4-Button
Part# ZoneCTRL-4ButtTx



Zone Control's water resistant receiver includes 3 built in timers.



www.abtwireless.com

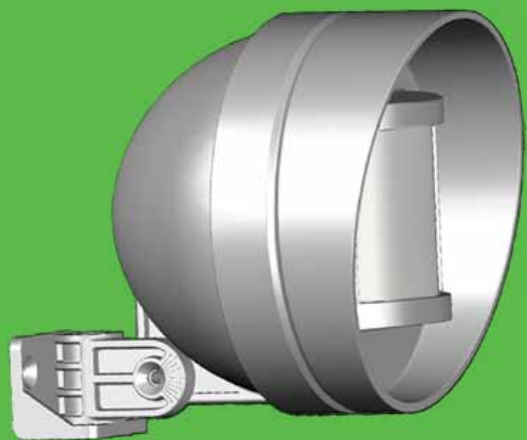


Home & Landscape

For more information

Call Joel Reinders at
1-800-785-3306
Ext.242

www.abtwireless.com



ABT MotionControl

Get Protected

The ABT MotionControl provides an additional level of security by illuminating designated lighting areas via motion. The sleek lightweight design can be mounted to any flat surface and communicates wirelessly to the Zone Control Receiver.

Wireless Motion Sensor

The ABT MotionControl includes a built-in motion sensor. No wiring required. Once motion is detected a signal is sent to an ABT Zone Control receiver. The signal turns on any landscape lights connected to the Zone Control Unit. Any lights not already "On" will turn on for 5 minutes. Multiple MotionControl units can be learned into a Zone Control receiver to facilitate additional coverage.

Continuous Monitoring

Once activated the MotionControl will re-scan to check for motion every 4 minutes. If motion is detected the ZoneControl will stay on for an additional 5 minutes. Events such as parties will allow the lights to stay on as long as movement is detected.



www.abtwireless.com



Home & Landscape

For more information

Call Joel Reinders at
1-800-785-3306
Ext.242

FEATURES:

- Wireless Motion Sensor for Landscape Lighting. No Wires Needed!
- 35 ft. sensing range.
- Pet immunity for animals less than 55 lbs.
- Powerful RF signal travels up to 100 feet.
- RF signal travels through walls and floors. No line of sight required.
- Built in battery (5 yr. battery life).
- Works in conjunction with the ABT Zone Control.
- Turns all landscape lights on that are not already on for 5 min.
- Includes waterproof housing for outdoor use.
- Adjustable mounting bracket included.



Part # *CALL*

www.abtwireless.com



Power-Lynx Wireless AC Controller

Go Wireless

Power-Lynx is a unique two-in-one AC control system that lets you turn anything you plug-into it wireless.

Power-Lynx operates as a standard AC outlet for your electrical devices. However, the Power-Lynx incorporates a built in wireless RF receiver that communicates with its sleek mini remote control

Power-Lynx gives you control of any 115V electronic device from up to 100 feet away.

Power-Lynx is perfect for controlling your LED holiday lights. The Powerlynx can handle 6150 individual LED lights. That's over 100 strands with 60 lights per strand. (Capacity: 375 W / 3 amps).



For more information

Call Joel Reinders
at
1-800-785-3306
Ext.242

The sleek Power-Lynx mini RF remote can be mounted in a window sill or other convenient location.



FEATURES:

- Universal control of any 115V electronic device
- Wirelessly control over 100 strands (60 bulbs) of LED lights.
- Remote Control access of On/Off and Program Reset features.
- Powerful RF signal travels up to 100 feet. RF signal travels through walls and floors. No line of sight required.
- Digital Timer offering programmable daily On/Off times.
- Auto Mode allows automatic override of programmed start time to allow manual control of pump.
- Waterproof housing (optional) for outdoor use.
- Patented "Remote Learning" process allows the use of multiple ABT remotes such as small hand held or sleekwall mount for operation.

PART# PWRLNX-001



Controls
Fountain Pumps
Landscape
Lighting
Christmas Lights
and More!

www.abtwireless.com



Shown with WS-022 adapter cord for Kichler & FX transformer installs

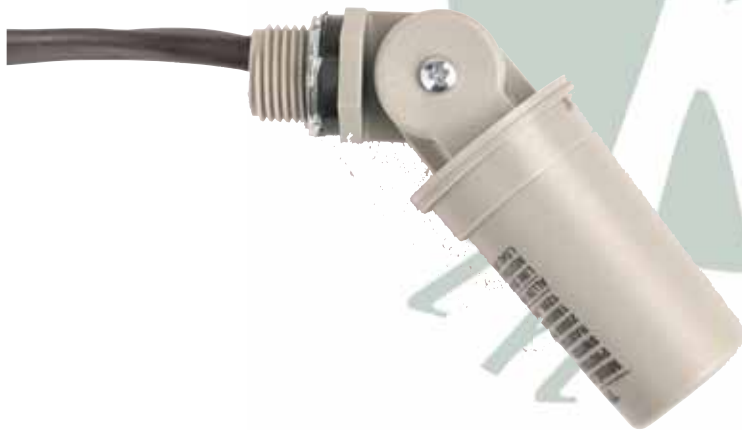
ASTRONOMIC TIMER #DT27C

This timer calculates the time for sunrise and sunset for every day of the year based on your geographic location and adjusts the on/off times accordingly. Multiple timers can be programmed before installation so all transformers on a project turn on within seconds of each other. Eliminates the need for photocells. Automatically adjusts for daylight savings time. Manual override feature. 1-1/2 month battery backup. Up to 112 on/off settings per week.



OUTDOOR RATED ANALOG TIMER #TN111RM

Almost all white lamp-style timers are not rated for outdoor use. This black model is. Handles temp ranges from -20°F to 140°F. Sunlight resistant. UL recognized(E10694) & CSA approved(LR3730) for outdoor applications. LED backlight allows for easy nighttime adjustment.



KICHLER PHOTOEYE #K15565BK

Rated for 2000W Tungsten, 1800VA ballast load. Includes proprietary adapter plug for Kichler transformers. Articulates for accurate adjustment and includes a test boot.



FX LUMINAIRE PHOTOEYE #PX-PC1

Rated for 1000W Tungsten. Designed to fit snugly inside the PX Series transformer from FX. Includes a test boot.