

### Xeri-Sprays™ and Misters

Ideal for ground cover, mass plantings, annual flower beds, and containers.

#### Features

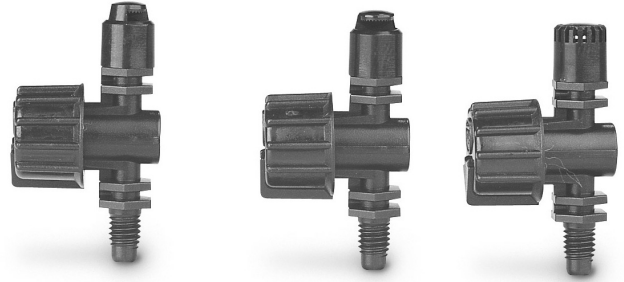
- Adjust flow/radius by turning integral ball valve.
- Uniform emission pattern provides excellent distribution.
- 10-32 self-tapping threads fit into ½" x 10-32 adapter (10-32A); 1800 Xeri-Bubbler™ adapter (XBA-1800); and PolyFlex Riser (PFR-12).

#### Operating Range

- Flow: 0 to 31 GPH (0 to 117,34 l/h)
- Pressure: 10 to 30 psi (0,75 to 2,1 bars)
- Radius: 0 to 13.4 feet (0 to 4,1 m) full-circle; 0 to 10.6 feet (0 to 3,2 m) quarter- and half-circle

#### Models

- XS-090: Quarter-circle, spray
- XS-180: Half-circle, spray
- XS-360: Full-circle, stream spray
- X360 ADJMST



XS090, XS180, XS360

### Xeri-Sprays™ and Misters Performance

Pressure psi	Flow GPH	XS-90 Radius of Throw ft.	XS-180 Radius of Throw ft.	XS-360 Radius of Throw ft.	360 Mister Radius of Throw ft.
10	0-16.7	0-6.4	0-6.7	0-9.2	0-1.5
15	0-21.0	0-8.1	0-8.1	0-11.3	0-1.3
20	0-24.5	0-9.4	0-9.5	0-12.9	0-1.5
25	0-28.0	0-9.8	0-10.1	0-13.2	0-1.4
30	0-31.0	0-10.3	0-10.6	0-13.4	0-1.3

### Ordering Information

Model #	Product Description	Ctn. Qty.
XS090	Xeri-Spray Adjustable 90 Degree Spray	10
SX180	Xeri-Spray Adjustable 180 Degree Spray	10
XS360	Xeri-Spray Adjustable 360 Degree Spray	10
XS360ADJMST	Xeri-Spray Adjustable Spray w/ Adjustable Radius	20