

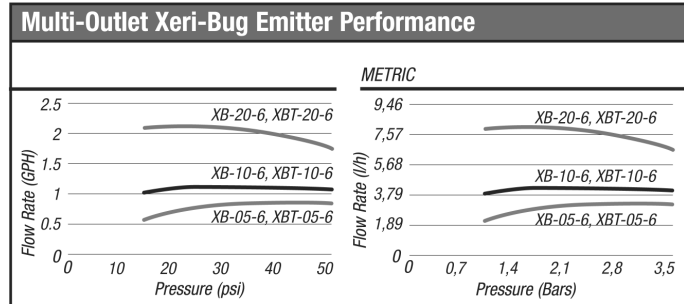
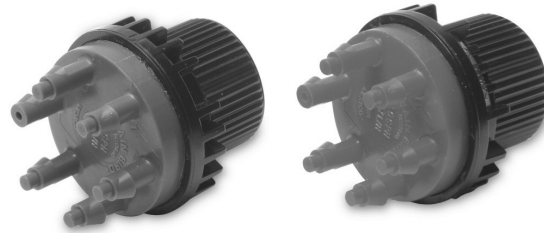
**Multi-Outlet Xeri-Bug™**

**Features**

- Pressure compensating design delivers uniform flow throughout a wide pressure range (15 to 50 psi; 1,0 to 3,5 bars).
- Six-outlet emitter supplied with one outlet opened. Simply clip the outlet tips open with snips or clippers for additional operational ports.
- Barbed outlets retain ¼" distribution tubing (DT-025 or PT-025).
- Self-flushing action minimizes clogging.
- Durable, UV-resistant plastic housing.
- Color-coded for easy identification.

**Operating Range**

- Flow: 0.5, 1.0 or 2.0 GPH (1,89; 3,79 or 7,57 l/h)
- Pressure: 15 to 50 psi (1,0 to 3,5 bars)
- Filtration: 150-mesh (100-microns)



<b>Ordering Information</b>		
<b>Model #</b>	<b>Product Description</b>	<b>Ctn. Qty.</b>
XB056	Multi-Outlet Xeri-Bug Barb Inlet x Barb Outlet (Blue) 0.5GPH	10
XB106	Multi-Outlet Xeri-Bug Barb Inlet x Barb Outlet (Black) 1.0GPH	10
XB206	Multi-Outlet Xeri-Bug Barb Inlet x Barb Outlet (Red) 2.0GPH	10
XBT056	Multi-Outlet Xeri-Bug 1/2" FPT inlet x Barb Outlet (Blue) 0.5GPH	10
XBT106	Multi-Outlet Xeri-Bug 1/2" FPT inlet x Barb Outlet (Black) 1.0GPH	10
XBT206	Multi-Outlet Xeri-Bug 1/2" FPT inlet x Barb Outlet (Red) 2.0GPH	10

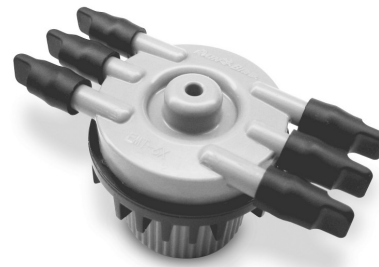
**6 Outlet Manifold - EMT-6XERI**

**Features**

- ½" FPT inlet threads onto ½" riser and provides a manifold with six free-flowing ¼" barb outlets.
- Each barb outlet is sealed with a durable plastic cap.
- Plastic caps remove easily, allowing for a drip area that can be customized with up to six different emission devices.
- Attach ¼" distribution tubing (DT-025 or PT-025) onto each outlet for use with: Xeri-Bugs, PC Modules, Xeri-Pops, Xeri-Sprays, and Xeri-Bubblers.

**Operating Range**

- Pressure: 15 to 50 psi (1,0 to 3,5 bars)



<b>Ordering Information</b>		
<b>Model #</b>	<b>Product Description</b>	<b>Ctn. Qty.</b>
EMT6XERI	6 OUTLET MANIFOLD, 1/2" FPT INLET THREADS W/ SIX 1/4" BARB OUTLETS	10