

Ductile Iron Gasketed Fittings

<u>Part Number</u>	<u>Description</u>
80300	3" Ductile Iron Tee
80400	4" Ductile Iron Tee
80600	6" Ductile Iron Tee
80800	8" Ductile Iron Tee
80401	4"x4"x3" Ductile Iron Tee
80601	6"x6"x4" Ductile Iron Tee
80320	3" Ductile Iron 90 Degree Elbow
80420	4" Ductile Iron 90 Degree Elbow
80620	6" Ductile Iron 90 Degree Elbow
80820	8" Ductile Iron 90 Degree Elbow
80322	3" Ductile Iron 45 Degree Elbow
80422	4" Ductile Iron 45 Degree Elbow
80622	6" Ductile Iron 45 Degree Elbow
80822	8" Ductile Iron 45 Degree Elbow
80324	3" Ductile Iron 22-1/2 Degree Elbow
80424	4" Ductile Iron 22-1/2 Degree Elbow
80624	6" Ductile Iron 22-1/2 Degree Elbow
80824	8" Ductile Iron 22-1/2 Degree Elbow
80430	4"x3" Ductile Iron Reducer-SEB
80632	6"x4" Ductile Iron Reducer-SEB
80634	6"x3" Ductile Iron Reducer-SEB
80832	8"x6" Ductile Iron Reducer-SEB
80834	8"x4" Ductile Iron Reducer-SEB



Tee



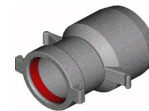
90 Degree Elbow



45 Degree Elbow



22-1/2 Degree Elbow



SEB Reducer

NOTE: This listing is a small selection of the ductile iron fittings that Harco makes. For a complete listing, please give us a call.

Romac Fittings

<u>Part Number</u>	<u>Description</u>
501-2.55X2.55X5"	2-1/2" Romac Straight Coupling-PVC Pipe
501-3.65X3.65X5"	3" Romac Straight Coupling-PVC Pipe
501-4.70X4.70X7"	4" Romac Straight Coupling-PVC Pipe
501-6.76X6.76X10"	6" Romac Straight Coupling-PVC Pipe
501-8.75X8.75X10"	8" Romac Straight Coupling-PVC Pipe