

SPYKER SPREADERS

spread with confidence

**For Models:
88, 296, 298**

Spreading Chart

Operation Guide

Service Manual

Parts List



It's the spread that counts

**P.O. Box 210
810 W. Main Street
N. Manchester, IN
46962 USA**



**1-800-972-6130
Fax: 219.774.3416**

Assembly Instructions

**For Quick and Easy Assembly - First Read Entire Procedure
Then Follow Carefully The Step by Step Instructions**

Tools You will Need:

Screwdriver
7/16 Wrench
3/8 Wrench
Mallet

Parts You will Use:

Parts for Models: 296, 298

- (1) Drive Wheel
- (1) Idle Wheel
- (2) Handle - SS.
- (2) Bump Bar - SS.
- (1) Screw 10-24x1-3/4 Bolt
- (1) Nut 1/4 - 20
- (2) Washer - Finishing
- (2) Handle Grip
- (9) Nut
- (1) Agitator Wire
- (1) Felt Washer
- (1) Upper Spinner Shaft
- (1) Coupling
- (1) Spring Clip
- (1) Cotter Pin
- (6) 1/4 - 20x1-1/2 Bolt
- (3) 1/4 - 20x2-3/4 Bolt
- (1) Screen
- (1) Spinner

NOTE: Painted model 296 shown in assembly instructions. 298 is stainless frame (not shown).

Spreader Assembly

1.

Insert the ground prop (46) into the frame and fasten with two bolts (47) and nuts (5) supplied.

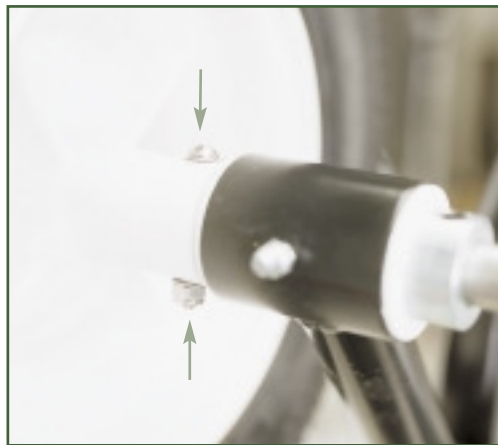


2.

a. Mount tires on axle as shown to the right, noting that the drive wheel (33) has a hole in the hub for the bolt (42) to go through the axle and fasten with nut (44) as illustrated with an arrow in diagram 2b.



2b. Washers (50) go on either side.



Spreader Assembly continued

- 3.** Attach the idle (34) wheel to axle with the washer (45) and cotter pin (25) as shown right.



- 4.** Insert handles (40) into frame as shown right and fasten handles loosely (40) to frame (14) with 4 bolts (48) and 4 nuts (5). Attach handles (40) loosely together with 1 bolt (41) and nut (5) at location illustrated with arrow. Leave the top two holes empty until you attach the levers.



- 5.** Attach on/off control lever (37) and Accuway control lever (38) to the handles as shown and bolt together with two of the longer bolts (41) supplied (5). Tighten all nuts & bolts at this time.



Cable Adjustment Procedure

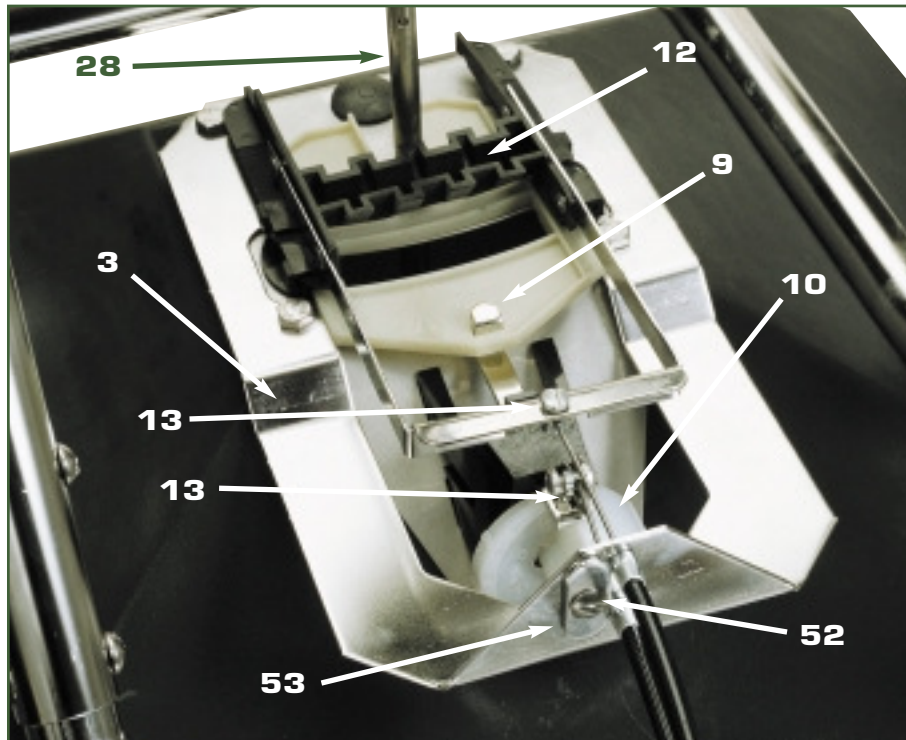
for Model 88 and Current Models 296 & 298



Make sure that both levers are pulled all the way back towards the handles.

Cable Adjustment Procedure

for Model 88 and Current Models 296 & 298



2. Turn the rate control dial (10) to the highest setting, (all the way past the number (9) until the notch on the linkage stops against the flat surface of the dial). Insert control cables in the holes in the cable mount bracket (3) and guide the inner wire through the hole in the cable fasteners (13). Slide cables over so that the slots in the cable ends are held firmly by cable mount bracket. NOTE: The on/off control lever (37) goes into the lower hole in this illustration which then attaches to the rate gate linkage (9). Secure cable by inserting screw (52) into hole of cable retainer (53) and screwing into cable mount bracket (3). Make sure that the diffuser assembly (12) is slid back completely against the upper spinner shaft (28), and the rate gate linkage (9) is slid back against the dial (10). Now tighten the set screws in the cable fasteners (13) to secure the wires to the fasteners.

Spreader Assembly continued

- 6.** Insert the bump bar (46) into frame as shown to the right and fasten with two bolts (15) that fasten the front of the hopper to the frame. The bolts go through the bump bar and are fastened with nuts (5).

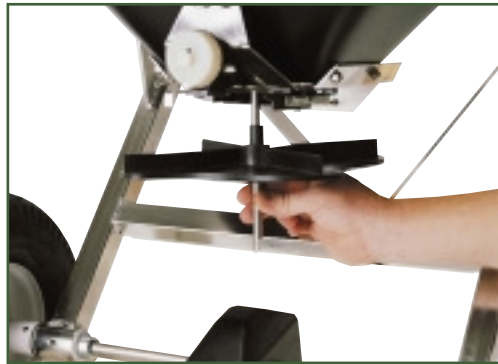


Spinner Assembly

- 1.** Insert upper spinner shaft (28) into the bottom of hopper so that the end with the hole for the agitator wire goes up into the hopper.



- 2.** Slide spinner (31) onto upper spinner shaft (28).



Spinner Assembly continued

- 3.** Slide coupling (29) onto upper spinner shaft (28).



- 4.** Connect upper spinner shaft (28) and lower spinner shaft (23).



- 5.** Slide coupling (29) down to secure connection of upper & lower spinner shafts.



Spinner Assembly continued

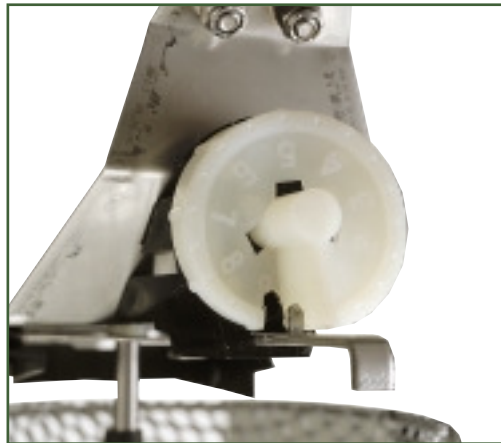
- 6.** Insert spinner clip (30) through hole in spinner (31) and hole in upper spinner shaft (28).
NOTE: Use upper hole in spinner shaft for the regular spinner (31) and use the lower hole for the mulch spinner.



- 7.** Snap the loop of the spinner clip (30) around upper spinner shaft (28) to secure spinner (31).

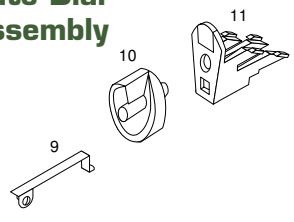


- 8.** The slot in the dial is to allow the rate gate linkage to travel all the way open for the mulch setting on models 296 & 298 only.

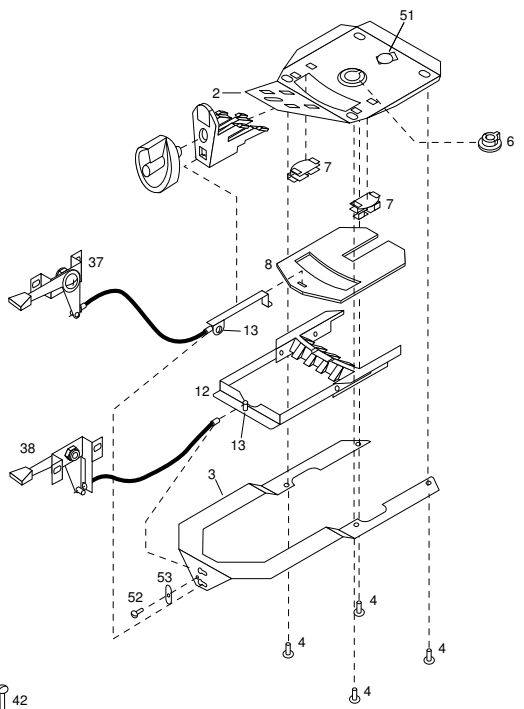


Exploded View Model 88

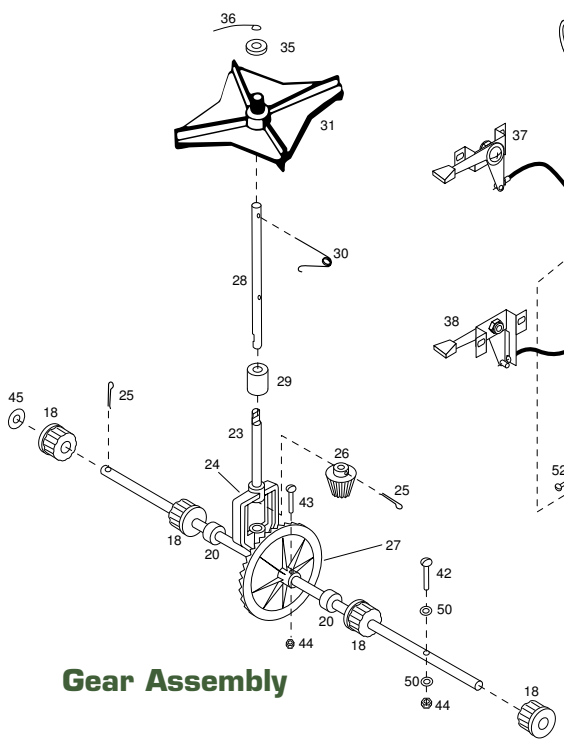
Rate Dial Assembly



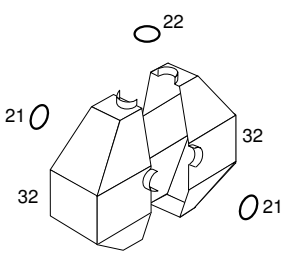
Hopper Bottom



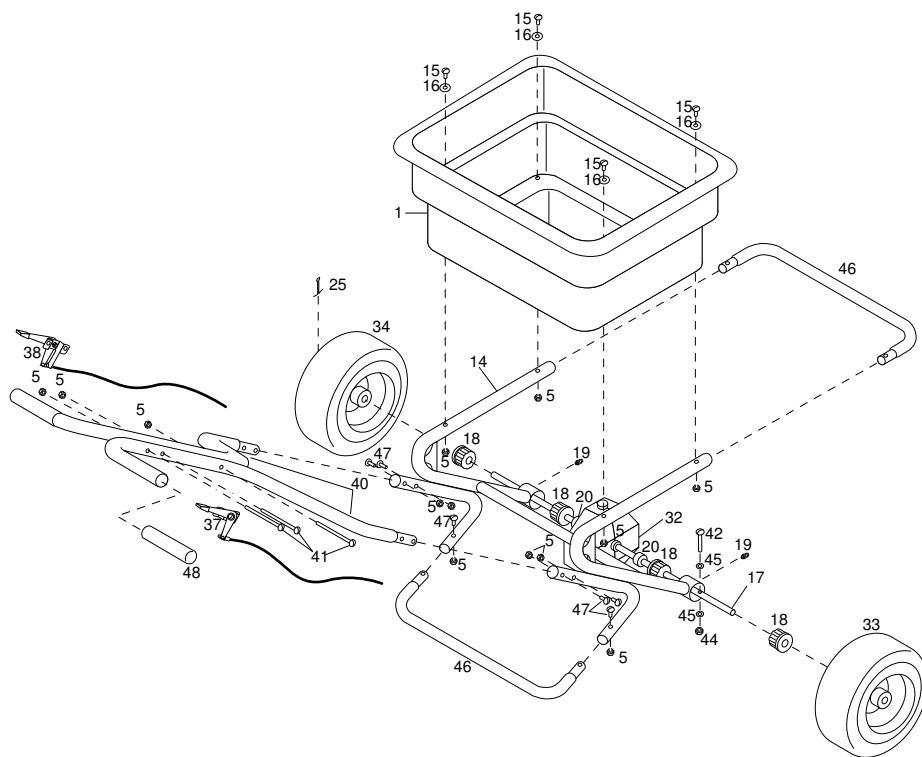
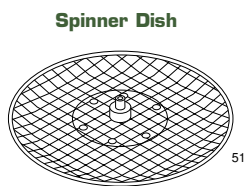
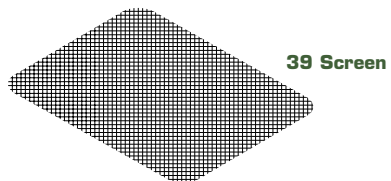
Gear Assembly



Gear Box Housing

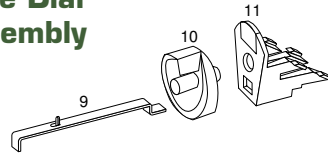


Exploded View Model 296 & 298

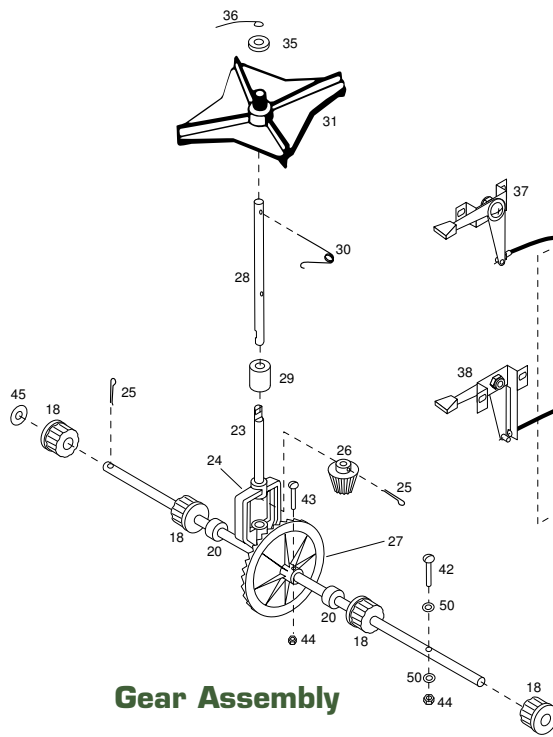
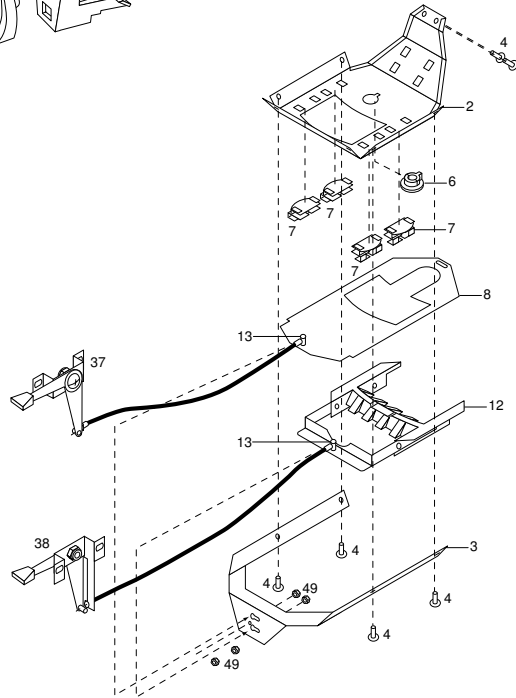


Exploded View Model 296 & 298

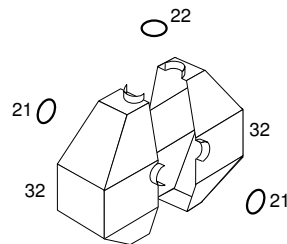
Rate Dial Assembly



Hopper Bottom



Gear Assembly



Gear Box Housing

Parts List

296

Item #	Part #	Quantity	Description	Price
1	05-296-2210	1	Hopper	73.44
2	05-296-2215	1	Hopper Bottom	21.36
3	05-296-0180	1	Cable Mount Bracket	19.56
4	05-90-0049	8	Hopper Bottom Bolt 1/4-20 X 1/2	.10
5	SS-91-0004	21	Nut	.12
6	SS-94-0007	1	Hopper Bottom Bearing	.21
7	05-94-0042	4	Rate Gate Diffuser Guide	.54
8	05-296-2220	1	Rate Gate	9.99
9	05-296-0110	1	Rate Gate Linkage	2.94
10	05-296-0131	1	Dial	2.58
11	05-94-0069	1	Dial Mount	1.74
12	05-296-0175	1	Diffuser Assy.	17.70
13	05-90-0044	2	Cable Fastener	.57
14	05-296-1020	1	Frame	98.07
15	05-90-0016	4	Bolt 1/4-20 X 1-3/4 / Hopper to Frame	.21
16	05-94-0064	4	Plastic Washer	.10
17	05-296-1040	1	Axle	18.69
18	05-94-0071	4	Axle Bushing	.48
19	05-98-0051	2	Grease Zerk	.84
20	05-90-0013-R	3	Collar	1.50
21	05-94-0039	2	O Ring	.10
22	05-94-0038	1	O Ring	.10
23	05-97-0029	1	Lower Spinner Shaft	25.71
24	05-94-0035	1	Gear Support / Yoke	5.34
25	99-50-1081	2	Cotter Pin / Idle Wheel	.10
26	05-94-0034	1	Pinion Gear	2.16
27	05-94-0033	1	Bevel Gear	4.62
28	05-97-0028	1	Upper Spinner Shaft	29.79
29	05-97-0030	1	Coupling	29.04
30	05-97-0031	1	Spinner Clip	1.53
31	05-296-0140	1	Spinner	6.57
32	05-94-0036	2	Gear Box Housing	1.98
33	05-95-0016	1	12" Drive Wheel	34.83
34	05-95-0017	1	12" Idle Wheel	35.94
35	SS-92-0002	1	Felt Washer	.10
36	SS-96-0003	1	Agitator Wire	.39
37	05-296-0155	1	On/Off Control Lever Assy.	41.79
38	05-296-0190	1	Accuway Control Lever	45.75
39	05-296-1070	1	Screen	8.43
40	05-296-1010	2	Handle	25.29
41	05-90-0017	3	Bolt 1/4-20 X 2-3/4 / Handle & Controls	.54
42	05-90-0031	1	Screw 10-24 X 1-3/4 / Drive Wheel	.12
43	05-90-0015	1	Screw 10-24 X 1-3/8 / Bevel Gear	.15
44	05-91-0008	2	Drive Wheel & Bevel Gear Nut	.10
45	05-92-0004	2	Washer, Finishing / Idle Wheel	.18
46	05-296-1030	2	Bump Bar/Ground Prop	14.37
47	SS-90-0012	6	Screw 1/4-20 X 1-1/2 / Ground Prop	.18
48	05-94-0072	2	Handle Grip	1.77
49	05-91-0009	4	Jamb Nut	.30
50	05-92-0007	2	Washer, Finishing	.18
51	05-296-0115	1	Spinner Dish	59.45

Parts List

298

Item #	Part #	Quantity	Description	Price
1	05-296-2210	1	Hopper	73.44
2	05-296-2215	1	Hopper Bottom	21.36
3	05-296-0180	1	Cable Mount Bracket	19.56
4	05-90-0049	8	Hopper Bottom Bolt 1/4-20 X 1/2	.10
5	SS-91-0004	21	Nut	.12
6	SS-94-0007	1	Hopper Bottom Bearing	.21
7	05-94-0042	4	Rate Gate Diffuser Guide	.54
8	05-296-2220	1	Rate Gate	9.99
9	05-296-0110	1	Rate Gate Linkage	2.94
10	05-296-0131	1	Dial	2.58
11	05-94-0069	1	Dial Mount	1.74
12	05-296-0175	1	Diffuser Assy.	17.70
13	05-90-0044	2	Cable Fastener	.57
14	05-298-3020	1	Frame	165.33
15	05-90-0016	4	Bolt 1/4-20 X 1-3/4 / Hopper to Frame	.21
16	05-94-0064	4	Plastic Washer	.10
17	05-296-1040	1	Axle	18.69
18	05-94-0071	4	Axle Bushing	.48
19	05-98-0051	2	Grease Zerk	.84
20	05-90-0013-R	3	Collar	1.50
21	05-94-0039	2	O Ring	.10
22	05-94-0038	1	O Ring	.10
23	05-97-0029	1	Lower Spinner Shaft	25.71
24	05-94-0035	1	Gear Support / Yoke	5.34
25	99-50-1081	2	Cotter Pin / Idle Wheel	.10
26	05-94-0034	1	Pinion Gear	2.16
27	05-94-0033	1	Bevel Gear	4.62
28	05-97-0028	1	Upper Spinner Shaft	29.79
29	05-97-0030	1	Coupling	29.04
30	05-97-0031	1	Spinner Clip	1.53
31	05-296-0140	1	Spinner	6.57
32	05-94-0036	2	Gear Box Housing	1.98
33	05-95-0016	1	12" Drive Wheel	34.83
34	05-95-0017	1	12" Idle Wheel	35.94
35	SS-92-0002	1	Felt Washer	.10
36	SS-96-0003	1	Agitator Wire	.39
37	05-296-0155	1	On/Off Control Lever Assy.	41.79
38	05-296-0190	1	Accuway Control Lever	45.75
39	05-296-1070	1	Screen	8.43
40	05-298-3010	2	Handle	30.75
41	05-90-0017	3	Bolt 1/4-20 X 2-3/4 / Handle & Controls	.54
42	05-90-0031	1	Screw 10-24 X 1-3/4 / Drive Wheel	.12
43	05-90-0015	1	Screw 10-24 X 1-3/8 / Bevel Gear	.15
44	05-91-0008	2	Drive Wheel & Bevel Gear Nut	.10
45	05-92-0004	2	Washer, Finishing / Idle Wheel	.18
46	05-298-3030	2	Bump Bar/Ground Prop	20.61
47	SS-90-0012	6	Screw 1/4-20 X 1-1/2 / Ground Prop	.18
48	05-94-0072	2	Handle Grip	1.77
49	05-91-0009	4	Jamb Nut	.30
50	05-92-0007	2	Washer, Finishing	.18
51	05-296-0115	1	Spinner Dish	59.45

Parts List

88

Item #	Part #	Quantity	Description	Price
1	05-94-0054	1	Hopper	54.00
2	05-71-2205	1	Hopper Bottom	7.02
3	05-88-2235	1	Cable Mount Bracket	18.84
4	99-10-0205	5	Bolt 1/4-20 x 1/2" Hex Head / Hopper Bottom	.15
5	SS-91-0004	13	Nut	.10
6	SS-94-0007	1	Hopper Bottom Bearing	.35
7	05-94-0042	2	Rate Gate Diffuser Guide	.66
8	05-94-0068	1	Rate Gate	1.23
9	05-24-1102	1	Linkage	2.73
10	SS-94-0006	1	Dial	.51
11	05-94-0069	1	Dial Mount	1.74
12	05-88-2245	1	Diffuser Assembly	19.38
13	05-90-0044	2	Cable Fastener	.57
14	05-88-2220	1	Frame	159.63
15	05-90-0016	4	1/4-20 X 1-3/4 Bolt / Hopper to Frame	.30
16	05-94-0064	4	Plastic Washer	.05
17	05-88-2230	1	Axle	21.25
18	05-94-0071	4	Axle Bushing	.48
19	05-98-0051	2	Grease Zerk	.54
20	05-90-0013-R	3	Collar	1.38
21	05-94-0039	2	O-Ring	.15
22	05-94-0038	1	O-Ring	.10
23	05-97-0029	1	Lower Spinner Shaft	17.10
24	05-94-0035	1	Gear Support/Yoke	2.01
25	99-50-1081	2	Cotter Pin	.15
26	05-94-0034	1	Pinion Gear	2.43
27	05-94-0033	1	Bevel Gear	4.98
28	05-97-0028	1	Upper Spinner Shaft	19.50
29	05-97-0030	1	Coupling	9.00
30	05-97-0031	1	Spinner Clip	1.53
31	SS-94-0012-1	1	Spinner	5.31
32	05-94-0036	2	Gear Box Housing	1.95
33	05-95-0016	1	12" Drive Wheel	34.83
34	05-95-0017	1	12" Idle Wheel	35.94
35	SS-92-0002	1	Felt Washer	.10
36	SS-96-0003	1	Agitator Wire	.40
37	05-98-0063	1	On/Off Control Lever	3.75
38	05-98-0062	1	Accuway Control Lever	3.75
39	SS-96-0002	1	Screen	2.07
40	05-88-2215	2	Handle	40.89
41	05-90-0017	3	Bolt 1/4-20 X 2-3/4 / Handle Controls	.50
42	05-90-0031	1	Screw 10-24 X 1-3/4 / Drive Wheel	.20
43	05-90-0015	1	Screw 10-24 X 1-3/8 / Bevel Gear	.20
44	05-91-0008	2	Drive Wheel & Bevel Gear Nut	.10
45	05-92-0004	2	Washer, Finishing / Idle Wheel	.40
46	05-97-3030	2	Bump Bar/Ground Prop	18.54
47	SS-90-0012	6	Screw 1/4-20 X 1-1/2	.25
48	05-94-0072	2	Handle Grip	1.77
49	05-91-0009	4	Jamb Nut	.30
50	05-92-0007	2	Washer, Finishing/Drive Wheel	.18
51	05-94-0052	1	Rubber Plug	.45
52	05-90-0055	1	Screw 10-32 X 1/2" / Cable Retainer	.10
53	05-88-2240	1	Cable Retainer	1.29
54	05-98-0019	1	Retainer Wire	1.62

Read Before Using

SPEED - ACCURACY - FREEDOM FROM STRIPES AND STREAKS are yours - when you use this Spreader.

The spread width ranges from 4 ft. to 12 ft. wide, depending on the volume/density, particle size of the material and the rate of travel.

The spread thins or feathers at the outer edges, eliminating sharp, "Edge of spread" lines which cause stripes and streaks. Extra coverage can be given under trees and other heavy feeding areas without showing "edge of spread" lines.

Gaps and double overlaps are less likely. Small errors in travel are forgiven and do not show.

WARNING: When spreading products containing herbicides, exercise extreme caution with respect to careless spreading and to wind-drift.

CONTACT OF SOME PRODUCTS ON SOME PLANTS CAN BE FATAL.

If a dial setting is not found, use the size and weight comparison table found on the back page.

Determine a dial setting on the low side. If the setting proves to be too low, cover the area more than one time. A higher setting can be used when a proven dial setting is established.

REMEMBER - Published dial settings can be approximate only. The operation of the spreader, the condition of the material (damp or dry or over-pulverized) and weather conditions, are all contributing factors.

For these reasons, it's often a good idea to spread the area 2 times - at one-half rate - in cross directions (SEE INFORMATION ON ONE-HALF RATE DIAL SETTINGS ON REFERENCE CHART ON THE BACK PAGE. SPREADING AT ONE-HALF RATE DIAL SETTINGS IS HIGHLY RECOMMENDED UNDER DAMP & HUMID CONDITIONS.

BECOME FAMILIAR WITH THE OPERATION OF THE SPREADER BEFORE YOU PUT MATERIAL IN THE HOPPER.

Practice walking with the spreader, opening and closing the rate gate at the appropriate times.

Travel at a constant speed and operate the spreader lever position.

Remember: Open the rate gate **after the spreader is in motion** at operating speed (about 3 mph., or at a brisk walking pace).

Close the rate gate while spreader is **still at operational speed.**

Read Before Using

Rotary Agitator

Use the rotary agitator only if needed. Free-flowing, lump-free materials will not require the agitator. The rotary agitator is easily installed or removed. Note the clockwise rotation & sweep. Place felt washer around spinner shaft before inserting agitator. - See page #11.

OIL BEARINGS AND ALL MOVING PARTS

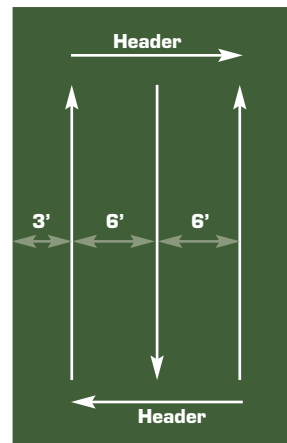
Make certain the spreader is running freely!

Now You are Ready to Put Material in the Hopper

- Make certain the *rate gate is in closed position*.
- As insurance against spill damage and spill loss, put material in the hopper with the spreader on a walk, driveway, paper, plastic, etc.
- The spreader will be easier to use if you only half-fill the hopper. Later on you can fill the hopper if you so choose.
- Or for added capacity, the inverted bag in the hopper can serve as a capacity extension. Also, an extension hopper, complete with filtering and pulverizing screen, is available from the manufacturer.

Now You are Ready to Spread

- Spread header strips at the ends of the area **OPPOSITE** the direction of spreading. This will provide a "turn-around" area, an area to realign the spreader for the return spread.
- Example is for 6 ft. wide spread: Make the first spreading pass at one-half the spread width from the edge of the spreading area or in this case approximately 3 feet or one big step.
- Additional spreading passes will be at the full spread width or approximately 6 feet apart.
- **TAKE A SIGHTING AT THE FAR END.** Keep your eye on the sighting as you spread. You will not need to wonder where you are or where you have been. Continue until spreading is completed.
- Left over fertilizer can be spread under trees and other high feeding areas without showing "edge of spread" lines.



Read Before Using

NOTE: With the rotary agitator installed, the rate gate closed (not spreading) and with material in the hopper, the spreader will push harder than normal. (This is because the agitator is stirring the material and it has no place to go.)

RECOMMENDATION: When not spreading and the spreader is being pushed some distance, tip the spreader so only the idle wheel is on the ground.

Cleaning the Spreader is Part of the Spreading Job.

IMMEDIATELY AFTER USE - CLEAN AND OIL THE SPREADER

- **Method #1** - Wipe spreader thoroughly with an oily cloth. Oil all bearings and bearing areas.
- **Method #2** - Wash, rinse, and dry the spreader. Note: Drying takes time. (Moisture trapped in bearing areas is slow to go.) Immediately after drying - oil all bearings and moving parts. Make certain all operations are thorough.

Note: Good "Dry Cleaning" is preferable to poor "Wet Cleaning".

- It is virtually impossible to have rust and corrosion on a clean, dry, oiled surface.
- Again - just before using - oil all bearings and moving parts.
- In storage, ideally the spreader should be hung by the handle. In any case, do not pile weight on the spreader, as excess weight over a period of time can distort the tires.

Grass Seed Spreading Chart

Dial settings are approximate only. Spreading at one half rate in cross directions is usually recommended.

Manufacturer and Product	Manufacturer's Bag Rate		Micro-Dial Settings		Spread Width (In feet based on brisk walking)
	Bag Weight	Sq. Ft. Coverage	Full Rate Once Over	Half rate Twice Over	
Bent Grass or Red Top	.5#	1,000	1.25		4
	1#	1,000	2.0		4
	2#	1,000	2.5		4
Park, Merion, Delta, or Kentucky Bluegrass	.5#	1,000	2.5		4
	1#	1,000	3.0		4
	2#	1,000	3.5		4
Hulled Bermuda	2#	1,000	2.75	2.25	6
	3#	1,000	3.0	2.5	6
	4#	1,000	3.25	2.75	6
Mixtures including coarse seeds	2#	1,000	6.0		6
	4#	1,000	6.5		6
	6#	1,000	7.0		6
Rye Grasses or Tall Fescue	2#	1,000	6.0		6
	4#	1,000	7.0		6
	6#	1,000	7.75		6
Dichondra	4 oz.	1,000	1.9		8
	8 oz.	1,000	2.1		8
	12 oz.	1,000	2.5		8
Pensacola Bahia	4#	1,000	4.5	3.75	7
	5#	1,000	4.75	4.0	7
	6#	1,000	5.0	4.25	7

Dial Setting Guide

Dial settings are approximate only.








Dial Number	Scott Dial Letter	Full Rate Once Over	Half Rate Twice Over
2.5	A	2.0	1.5
3.0	B	2.5	2.0
3.25	C	3.0	2.25
3.5	D/E	3.5	3
3.75	F	4.0	3.5
4.0	G	4.5	3.9
4.25	H/I	5.0	4.2
4.5	J	5.5	4.7
4.75	K	6.0	5.0
5.0	L	6.5	5.3
5.25	M	7.0	5.7
5.5	N	7.5	5.8
5.75	O	8.0	6
6.0	P/Q	8.5	6.5
6.25	R/S	9.0	7.1

Dial setting numbers correspond to Scott Rotary Spreader dial settings as shown



Granule Size - Dial Setting Guide

Dial settings are approximate only.

	Product	Lbs. per 1000 Sq. Ft.	Full Rate	Half Rate
	Fine Pellets	1	3.6	3.1
		2	4.0	3.5
		3	4.2	3.7
	Mixed Fine Pellets	2	3.7	3.2
		4	4.7	4.1
		6	5.2	4.5
	Small Pellets	2	3	2.2
		4	4.2	3.7
		6	4.5	4
	Nitrogen Pellets Med.	1	3.5	3
		2	4.2	3.7
		3	4.7	4
	Med. Pellets & Granules	2	3.5	3
		4	4.2	3.8
		6	5.2	4.5
	Med. Pellets	2	3.5	3
		4	4.2	3.8
		6	5.2	4.5
	Large Heavy Pellets	2	3.8	3.3
		4	4.9	4.1
		6	5.9	4.9

Broadcast Spreading



Broadcast spreading is as old as early man. In the early days of agriculture, field seeding was accomplished with hand cast broadcasting. The hand cast method of seeding was a limited factor in growing field crops that were hand seeded.



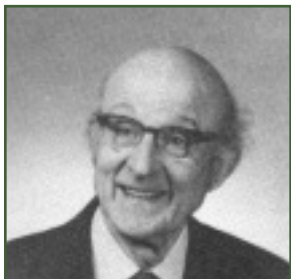
Mechanized casting came into being in 1868 when Samuel Speicher invented the Hand Crank "Cyclone" Seeder.

The seed sower was a breakthrough in field seeding. It was hailed as a major advancement in agricultural implements.



Paul Speicher put the hand crank seeder on wheels in 1955.

This development ushered in a new era in spreading and spreading products. New products and product forms adapted to broadcast spreading were developed.



In 1988 a new dimension was added to broadcast spreading - SPREAD PATTERN CONTROL - a dead center spread pattern equalizer.

Spyker's Accuway® spread pattern equalizer solves a complicated problem with a fundamental patented solution.

Did You Know?

THERE'S MORE TO A SPREADER THAN MEETS THE EYE — LOTS MORE

Spreadability

Dial-a-matic regulator ensures exact spread rate. Accuway® Spread Pattern Equalizer assures exact placement of the spread pattern - Bull's Eye - dead to the center of the spreader. All products - All spreading conditions. Skewing is eliminated.

Durability

Series 290 spreaders will survive use and abuse. Welded steel construction is double braced, finished in baked on powder coated enamel. Generous use of highest quality stainless steel. Guaranteed metal gears.

Reliability You can count on.

Accuway® spread control system is so innovative, it's patented. Is so successful it's used on all Spyker series 290 spreaders.

Operating Instructions

Models 296, 298

The Mulch-n-More 290 series all operate basically the same. The 296 (powder coated frame) and 297 (stainless steel frame) are push models and the 297 (powder coated frame) and 299 (stainless steel frame) are pull models designed for small tractors, ATV's Gators® and other light equipment. All 290 series have solid stainless axle, metal drive gears and welded frames making this the most durable, long lasting ground driven spreader on the market today.

The following is a description of Mulch-n-More 290 series operating instructions...

All units come standard with a regular spinner blade for spreading seed, fertilizer, granular chemical products and other lower rate granular products.

There are a variety of optional attachments for the 290 series...

- 1. Mulch Spinner Blade...** Used for spreading a variety of products from Pellet Mulch such as PennMulch® to Dry Sand, Salt and other difficult to spread high volume or large particle products. With Spyker's patent pending removable spinner blade you can change to mulch blade in a matter of seconds. All other spreaders that are on the market require the removal of the hopper to access the spinner blade which can take as long as 1/2 to 1 hour to do. No other spreader company manufactures a "mulch basket spinner blade" for use with high volume products.
- 2. Calibration Pan...** Used for calibrating the Turf product for accurate spreading to reduce waste and increase effectiveness of the product. This is the latest, greatest attachment for the 290 series. Calibrate without moving the spreader.
- 3. Border Patrol...** Used for guarding collars, greens, flower beds, driveways and sidewalks from fertilizer or pesticide materials. Stop flow to one side. Easily turned on and off with your foot while continuing to spread.
- 4. Barrier Shield...** For use with ice melt products and salt to deflect the product down on to the sidewalk (3' width pattern) essentially converting the rotary spreader to a drop spreader for sidewalks.

Operating Instructions

Simply put the “Accuway Control” deflects the material you are spreading to another area on the spinner blade thereby adjusting your spread pattern to dead center.

- 1.** The Model GolfStaff Pro-88, Mulch-n-More 296, 298 and Mulch-n-More Electric 120 and 220 all have a standard “Spyker” 1-9 spreader setting knob located on the front (material distribution side) of the spreader. Simply dial the setting and you’re ready to spread. Even better, choose a setting and calibrate using the optional ‘calibration tray’ and calibration instructions included with your spreader.
- 2.** All Model 88’s have 2 levers on the handle. The lever on the right side is the gate open and shut control. Forward is open and backward is closed.
- 3.** The lever on the left side of the handle is called the “Accuway Control”. This lever controls the spread pattern of the product. To operate the “Accuway Control” push the left control handle all of the way forward prior to spreading the product. As you spread, if the spread pattern is skewing or flowing heavy to one side, slowly pull back on the left lever (VERY SLOWLY). As you pull the lever back towards you, you will begin to see the spread pattern change or go to center. When you see the pattern you wish to have, stop pulling the lever. You are set and no further adjustments are needed for the product you are spreading.
- 4.** If you lose the setting on the “Accuway Control” simply push the lever forward again and slowly pull back on the left lever until the pattern is where you would like it to be.

Note: Over adjusting the “Accuway Control” lever can block the flow of fertilizer completely. Follow step 4 if you are not sure where the Accuway Deflector is located.

Operating Instructions

Operating at the Mulch Setting

- 1.** You will notice a slot in the spreader setting dial control right where the 9 is or was located. Simply dial the setting so that the metal guide will go through this dial slot when you move the right control lever.
- 2.** The spreader opening will now move all of the way open to the maximum opening that the spreader can achieve.
- 3.** This setting was basically designed to spread PennMulch® at 70-75 lbs. per thousand square feet at 2.5 miles per hour. It's easy enough to check and adjust your walking speed. See Mulch-n-More calibration instructions "Calculating your walking speed".
- 4.** The "all of the way open" setting can also be used to spread dry sand, dry organic top dresses and fertilizers, salt and ice melt products and other normally difficult to spread products.
- 5.** When using the mulch setting you can gate the flow of the material as you're spreading. For salt, sand and top dress materials in which an accurate setting is not critical simply watch the flow of material as it comes out of the spreader. Either open more or close off (gate the flow) until you feel comfortable with the amount of material you are spreading. If you would like to check the flow rate simply mark the position of the control lever with a piece of tape and use the calibration bucket to check the coverage per thousand square feet. (See the calibration instructions included with the calibration bucket or "Calibrating the Mulch-n-More" on the www.spyker.com web site.)
- 6.** Through trials involving mass flow products such as sand and salt we have found that using the "mulch basket" gives you the best spread pattern. Although the spread will be slightly to the right using the mulch basket, the actual spread of the product is even all of the way across the effective spread width. Depending on the type of product you're spreading, using a standard spinner blade the product will flow heavy to the left and give you a less than desirable spread pattern leaving a heavy line of product in one spot and light at another. This is the exact reason Spyker developed the Mulch spinner blade. No other ground driven spreader has the capability of spreading materials at these high rates because they all use a standard spinner blade.

Operating Instructions

Changing the Spinner Blade

1. Simply remove the special “spring pin” from the spinner shaft that holds the regular spinner blade onto the spinner shaft. Lift the stainless collar that holds the shaft together.
2. Slide the shaft upwards a few inches and remove the blade from the shaft.
3. Slide the Mulch Basket onto the shaft, slide the collar back onto the shaft under the blade, re-connect the shaft and slide the collar over the break in the shaft.
4. Put the “spring pin” in the lower hole on the shaft (for the Mulch Basket) and clip the spring onto the shaft using the hook. The “spring pin” holds the spinner blade in place and stops the collar from moving upwards so that the shaft will not separate.
5. Reverse instructions for replacing the regular spinner blade. The only difference would be that you must pin the regular blade using the upper hole on the spinner shaft. It's easy. The upper hole is for the regular spinner blade, the lower hole is for the Mulch Basket.

LIMITED WARRANTY

This is warranted to the original purchaser only, other than used commercially, against defects in materials and workmanship, for a period of ninety (90) days from the date of purchase.

Spyker Spreaders LLC, will not be liable for any loss, damage or expense including, but not limited, consequential or incidental damages, arising from the operation, condition or use of the item, the sole and exclusive remedy against Spyker Spreaders LLC, being the replacement of the defective parts. This warranty gives you specific legal rights and you may also have other rights which vary from state to state.

THIS EXPRESS WARRANTY, WHICH IS APPLICABLE ONLY TO THE ORIGINAL PURCHASER, IS IN LIEU OF AND EXCLUDES ALL OTHER WARRANTIES, WHETHER EXPRESSED OR IMPLIED BY OPERATION OF LAW OR OTHERWISE, INCLUDING ANY WARRANTY OF MERCHANTABILITY OR FITNESS FOR PARTICULAR PURPOSE.

Spyker Spreaders LLC

810 West Main St.
N. Manchester, IN 46962.
U.S.A.

CALIBRATOR



FEATURES & BENEFITS

"ACCUWAY" Spread Pattern Equalizer ENSURES spreading dead center of the spreader. (Indicated with "22" in model number)



20 SERIES

Gears are unconditionally guaranteed ENSURES trouble free operation.

50 SERIES



Dial-A-Matic spread rate control ENSURES spreading at exact spread rates.

Optional BORDER PATROL spread pattern cut-off prevents spreading on drive-ways, flower beds, etc.



70 SERIES

Extension hoppers available for all round hopper spreaders. Adds 20 lbs. to capacity.

Shipped Set-Up. Saves time and labor ENSURES proper assembly. (except #64)

**MODEL 298
Mulch Spreader**



**MODEL 299
Mulch Spreader**

Stainless steel frames ensure longer spreader life, easier maintenance and present a quality image.

High grade plastic non-corroding wheels with nylon bearings, no lubrication required, ENSURES trouble free maintenance.

**P.O. Box 210 • 810 W. Main Street • N. Manchester, IN 46962 USA
1-800-972-6130 • Fax 219-774-3416**